

ARBOR ASSAYS™  
Interactive Assay Solutions™



**ISWE**

## **Progesterone Mini-Kit**

Catalog Number ISWE003

**Species Independent**

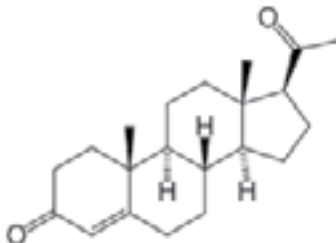
**Official Supplier  
to ISWE**



Please read this insert completely prior to using the product.  
For research use only. Not for use in diagnostic procedures.

## MINI-KIT PRINCIPLE

The ISWE Progesterone Mini-Kit is specifically designed to measure progesterone and/or its metabolites present in a variety of samples and species for wildlife conservation. The end user must provide or coat their own anti-mouse IgG secondary antibody coated plates, in addition to providing assay buffer, wash buffer, substrate and stop solution. On page 3, there is a list of Related Materials we supply that are used in our kits.



Three materials are supplied in the ISWE-Kit:

1. The ISWE Progesterone mouse antibody, CL425, was raised to the 3-CMO derivative of progesterone. The antibody has been titered and diluted in a buffer containing protein, detergents and Kathon preservative (see below) to ensure its stability. It is at a nominal "50X" concentration\*.

**NOTE:** The 50X Concentrate Mouse Antibody to Progesterone cannot be directly coated onto plates for EIA use. It is unpurified ascites fluid diluted in a buffer containing proteins and detergents. The antibody WILL NOT bind to uncoated microtiter plates effectively as the antiserum proteins and the dilution buffer both contain high concentrations of non-specific proteins that will coat any plate surface.

2. The ISWE Progesterone-Peroxidase conjugate is synthesized from 3-CMO derivative of progesterone and has been diluted in a stabilizing solution (see below) to ensure long term stability. It is at a nominal "50X" concentration\*.
3. The Progesterone Standard is synthetic steroid in a stabilizing solution containing buffer and organic solvent. It is supplied at 320 ng/mL for dilution into the assay buffer used for your assay.

\* The nominal "50X Concentration" the ISWE Antibody and Conjugate are QC tested using Arbor Assays Progesterone EIA kit reagents from K025-H1 and K025-H5. The ISWE Antibody was diluted in Assay Buffer, from X065, at 1:50 and the ISWE Conjugate diluted in Conjugate Diluent, X076, at 1:50. The assay utilized 100  $\mu$ L sample, 50  $\mu$ L antibody and 50  $\mu$ L conjugate added to a goat anti-mouse IgG coated plate, X012-1EA. Assay incubation time was 2 hours shaking at room temperature, followed by washing and addition of 100  $\mu$ L of TMB Substrate. After 30 minutes the substrate reaction was stopped by addition of 50  $\mu$ L of Stop Solution. The color was read at 450 nm.

## SUPPLIED COMPONENTS

### ISWE Progesterone Antibody Concentrate

A 50X Concentrate mouse monoclonal antibody specific for progesterone diluted in a buffer with proteins, detergents and preservatives.

6 mL

Catalog Number C211-6ML

### ISWE Progesterone Conjugate Concentrate

A 50X Concentrate progesterone-peroxidase conjugate in a special stabilizing solution.

6 mL

Catalog Number C212-6ML

### Progesterone Standard

Progesterone at 320 ng/mL in a special stabilizing solution.

1 mL

Catalog Number C213-1ML

## STORAGE INSTRUCTIONS

All components of this kit should be aliquoted into vials upon first thaw. Avoid repeated freeze thaw cycles. Store at -20°C until the expiration date of the kit.

## RELATED MATERIALS

| Description  | Catalog No.            |
|--|------------------------|
| Goat anti-Mouse IgG ISWE Plate Coating Accessory Kit | ISWE004                |
| Assay Development ISWE Accessory Kit                 | ISWE006                |
| Goat anti-Mouse IgG Coated Plate                     | X012-1EA               |
| Assay Buffer 5x Concentrate                          | X065-110ML             |
| HRP Conjugate Diluent                                | X076-300ML             |
| Wash Buffer 20x Concentrate                          | X007-125ML             |
| TMB Substrate  | X019-55ML              |
| Stop Solution  | X020-25ML              |
| Kathon Preservative                                  | X129-25ML              |
| Plate Coating Buffer 20x Concentrate                 | X108-100ML             |
| Blocking Buffer 10x Concentrate                      | X109-250ML             |
| Goat Anti-Mouse IgG, Affinity Purified               | A008-10MG              |
| Goat Anti-Mouse IgG, Affinity Purified               | A008-25MG              |
| Arbor Assays ISWE Plate Coating Course               | Contact us for details |

## PRECAUTIONS

This kit utilizes a peroxidase-based readout system. Buffers, including other manufacturers' Wash Buffers, containing sodium azide will inhibit color production from the enzyme. Make sure all buffers used for samples are **azide free**.

## PROTOCOLS

**Please Note:** The dilution of the ISWE Mini-Kit antibody and conjugate are such that when diluted 1:50 fold in Assay Buffer and Conjugate Diluent and added to an Arbor Assays antibody coated plate, using 100  $\mu$ L of sample or standards, 50  $\mu$ L of conjugate and 50  $\mu$ L of antibody in a 2 hour room temperature incubation with shaking (we recommend shaking at 700–900 rpm) followed by TMB as substrate, these reagents will generate about 1.0 OD at 450 nm. **YOUR RESULTS MAY VARY DEPENDING ON A NUMBER OF VARIABLES.**

The mouse anti-progesterone is supplied at a 50X concentration. An aliquot should be brought to room temperature and diluted one part with 49 parts of a suitable assay buffer. If your assay buffer has protein, detergent and a preservative in it, the diluted antibody will be stable for greater than 1 month at 4°C. Please see Related Materials on page 3 for a suitable Assay Buffer.

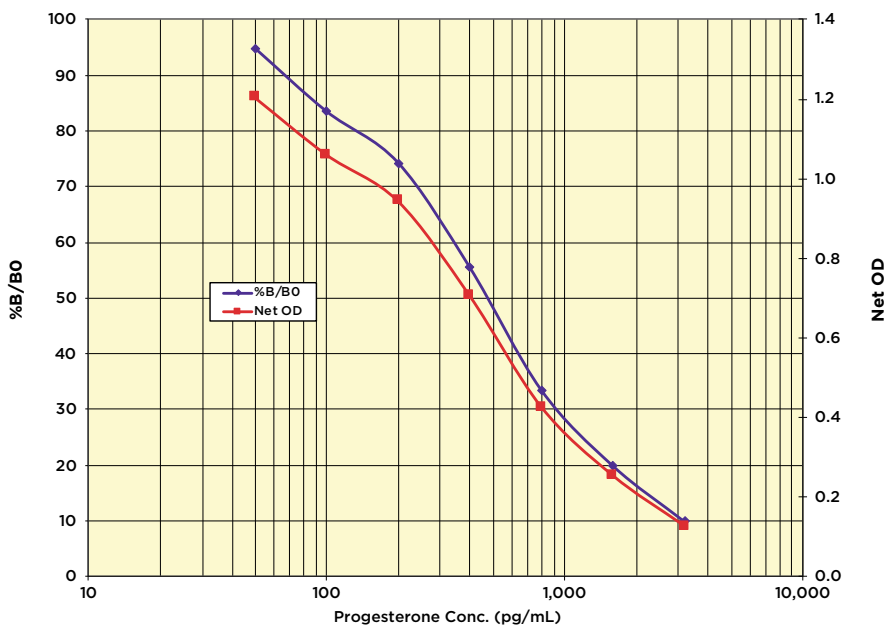
The progesterone-HRP conjugate is supplied at a 50X concentration. An aliquot should be brought to room temperature and diluted one part with 49 parts of a suitable diluent or assay buffer. If you wish to store the diluted conjugate for greater than 1 month at 4°C you should dilute it in a suitable conjugate diluent. Please see Related Materials on page 3 for a suitable Conjugate Diluent.

The progesterone standard stock is provided in a solution that contains an organic solvent. Prerinse the pipet tip several times to ensure accurate delivery.

## TYPICAL DATA USING ARBOR ASSAYS COMPONENTS

| Sample     | Mean OD | Net OD | % B/B0 | Progesterone Conc. (pg/mL) |
|------------|---------|--------|--------|----------------------------|
| NSB        | 0.084   | 0.000  | ---    | -                          |
| Standard 1 | 0.210   | 0.126  | 9.91   | 3,200                      |
| Standard 2 | 0.337   | 0.253  | 19.91  | 1,600                      |
| Standard 3 | 0.510   | 0.426  | 33.52  | 800                        |
| Standard 4 | 0.790   | 0.706  | 55.55  | 400                        |
| Standard 5 | 1.028   | 0.944  | 74.27  | 200                        |
| Standard 6 | 1.145   | 1.061  | 83.48  | 100                        |
| Standard 7 | 1.289   | 1.205  | 94.81  | 50                         |
| B0         | 1.355   | 1.271  | 100.00 | 0                          |
| Sample 1   | 0.465   | 0.381  | 29.98  | 972.0                      |
| Sample 2   | 1.013   | 0.929  | 73.09  | 200.5                      |

**Always run your own standard curve for calculation of results. Do not use this data.**



## CROSS REACTIVITY

The following cross reactants were tested in the assay and calculated at the 50% binding point.

| Steroid                           | Cross Reactivity (%) |
|-----------------------------------|----------------------|
| Progesterone                      | 100%                 |
| 3 $\beta$ -hydroxy-progesterone   | 172%                 |
| 3 $\alpha$ -hydroxy-progesterone  | 188%                 |
| 11 $\beta$ -hydroxy-progesterone  | 2.7%                 |
| 11 $\alpha$ -hydroxy-progesterone | 147%                 |
| 5 $\alpha$ -dihydroprogesterone   | 7.0%                 |
| Pregnenolone                      | 5.9%                 |
| Corticosterone                    | < 0.1%               |
| Androstenedione                   | < 0.1%               |

## SAMPLES

The kit has been tested in a diverse range of species. These are:



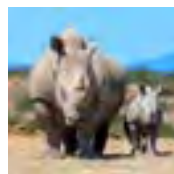
Felids, Fecal



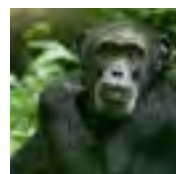
Dogs, Fecal



Elephants, Fecal



Rhinos, Fecal



Chimpanzees, Fecal



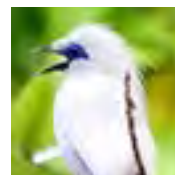
Gorilla, Urine



Hippopotamus, Fecal



Horn Bill, Fecal



Bali Myna, Fecal

## LIMITED WARRANTY

Arbor Assays warrants that at the time of shipment this product is free from defects in materials and workmanship. This warranty is in lieu of any other warranty expressed or implied, including but not limited to, any implied warranty of merchantability or fitness for a particular purpose.

We must be notified of any breach of this warranty within 48 hours of receipt of the product. No claim shall be honored if we are not notified within this time period, or if the product has been stored in any way other than outlined in this publication. The sole and exclusive remedy of the customer for any liability based upon this warranty is limited to the replacement of the product, or refund of the invoice price of the goods.

## CONTACT US

**We welcome your questions and comments regarding our products.**

**Tel: 0032 16 58 90 45**

**Email: [info@gentaur.com](mailto:info@gentaur.com)**



### OFFICIAL SUPPLIER TO ISWE

Arbor Assays and the International Society of Wildlife Endocrinology (ISWE) signed an exclusive agreement for Arbor Assays to supply ISWE members with EIA kits for wildlife conservation research.

*DetectX<sup>®</sup>, ThioStar<sup>®</sup> and the Arbor Assays logo are all registered trademarks.*

| A | B | C | D | E | F | G | H |
|---|---|---|---|---|---|---|---|
|   |   |   |   |   |   |   |   |
|   |   |   |   |   |   |   |   |
|   |   |   |   |   |   |   |   |
|   |   |   |   |   |   |   |   |
|   |   |   |   |   |   |   |   |
|   |   |   |   |   |   |   |   |
|   |   |   |   |   |   |   |   |
|   |   |   |   |   |   |   |   |
|   |   |   |   |   |   |   |   |
|   |   |   |   |   |   |   |   |
|   |   |   |   |   |   |   |   |
|   |   |   |   |   |   |   |   |



Printed on Forest Stewardship Council certified paper