



Estrogen ELISA Kit

08/18

(Catalog # E4616-100, 100 assays, Store at 4°C)

I. Introduction:

Estrogen is the primary female sex hormone. It is responsible for the development and regulation of the female reproductive system and secondary sex characteristics. Estrogen may also refer to any substance, natural or synthetic, that mimics the effects of the natural hormone. The steroid 17 β -estradiol is the most potent and prevalent endogenous estrogen, although several metabolites of estradiol also have estrogenic hormonal activity. Synthetic estrogens are used as part of some oral contraceptives, in estrogen replacement therapy for postmenopausal women, and in hormone replacement therapy for trans women. BioVision's Estrogen ELISA kit is a competitive ELISA assay for the quantitative measurement of estrogen in Human serum, plasma and cell culture supernatants. The density of color is proportional to the amount of Estrogen captured from the samples.

II. Application:

This ELISA kit is used for *in vitro* quantitative determination of estrogen in samples.
Detection Range: 15.625 – 1000 pg/ml
Sensitivity: < 9.375 pg/ml
Assay Precision: Intra-Assay: CV < 8%; Inter-Assay: CV < 10% (CV (%) = SD/mean X 100)
No significant cross-reactivity or interference between Estrogen and analogues was observed.

III. Sample Type:

Serum, plasma, tissue homogenates and other biological fluids.

IV. Kit Contents:

Components	E4616-100	Part No.
Micro ELISA Plate	8 X 12 strips	E4616-100-1
Lyophilized Standard	2 vials	E4616-100-2
Sample / Standard dilution buffer	20 ml	E4616-100-3
Biotin- detection antibody (Concentrated)	60 μ l	E4616-100-4
Antibody dilution buffer	10 ml	E4616-100-5
HRP-Streptavidin Conjugate (SABC) (Avoid light)	120 μ l	E4616-100-6
SABC dilution buffer	10 ml	E4616-100-7
TMB substrate (Avoid light)	10 ml	E4616-100-8
Stop Solution	10 ml	E4616-100-9
Wash buffer (25X)	30 ml	E4616-100-10
Plate sealers	5	E4616-100-11

V. User Supplied Reagents and Equipment:

- Microplate reader capable of measuring absorbance at 450 nm
- 37°C incubator

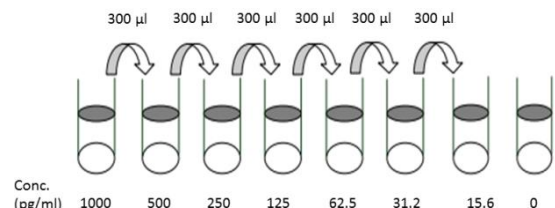
VI. Storage and Handling:

The entire kit may be stored at 4°C for up to 6 months from the date of shipment.

VII. Reagent and Sample Preparation:

Note: Prepare reagents within 30 minutes before the experiment. Before using the kit, spin tubes and bring down all components to the bottom of tubes.

1. **Biotin- detection antibody working solution:** Calculate the total volume of the working solution: 0.05 ml / well x quantity of wells with additional 0.1 - 0.2 ml of the total volume. Dilute the Biotin- detection antibody with Antibody dilution buffer at 1:100 and mix thoroughly.
2. **HRP-Streptavidin Conjugate (SABC):** Calculate the total volume of the working solution: 0.1 ml / well x quantity of wells with additional 0.1 - 0.2 ml of the total volume. Dilute the SABC with SABC dilution buffer at 1:100 and mix thoroughly.
3. **Wash Buffer:** Dilute 30 ml of Concentrated Wash Buffer into 750 mL of Wash Buffer with deionized or distilled water. Put unused solution back at 4°C. If crystals have formed in the concentrate, warm it with 40°C water bath and mix it gently until the crystals have completely dissolved. The solution should be cooled to room temperature before use.
4. **Standard Preparation:**
 - Reconstitute the lyophilized Estrogen standard by adding 1 ml of Standard/Sample Dilution Buffer to make the 1000 pg/ml standard stock solution. Use within 2 hours after reconstituting.
 - Allow solution to sit at room temperature for 10 minutes, then gently vortex to mix completely.
 - Prepare 0.6 ml of 500 pg/ml top standard by adding 0.3 ml of the above stock solution in 0.3 ml of Standard/Sample Dilution Buffer. Perform 2-fold serial dilutions of the top standards to make the standard curve within the range of this assay.





- Suggested standard points are: 1000, 500, 250, 125, 62.5, 31.3, 15.6, 0 pg/ml

5. Sample Preparation:

Note: Samples to be used within 5 days may be stored at 4°C, otherwise samples must be stored at -20°C (≤1 month) or -80°C (≤2 months) to avoid loss of bioactivity and contamination. Avoid multiple freeze-thaw cycles.

- **Serum:** Coagulate the serum for 2 hour at room temperature or overnight at 4°C. Centrifuge at approximately 1000xg for 20 min. Collect the supernatant and carry out the assay immediately. Blood collection tubes should be disposable, non-pyrogenic, and non-endotoxin.
- **Plasma:** Collect plasma using EDTA-Na₂ as an anticoagulant. Centrifuge samples for 15 minutes at 1000xg at 2 - 8°C within 30 minutes of collection. Collect the supernatant and carry out the assay immediately. Avoid hemolysis, high cholesterol samples.
- **Tissue homogenates:** Rinse the tissues with ice-cold PBS (0.01M, pH=7.4) to remove excess hemolysis blood thoroughly. Tissue pieces should be weighed and then minced to small pieces which will be homogenized in PBS (the volume depends on the weight of the tissue. 9 mL PBS would be appropriate for 1 g of tissue. Some protease inhibitor is recommended to add into the PBS.) with a glass homogenizer on ice. To further break the cells, sonicate the suspension with an ultrasonic cell disrupter or subject it to freeze-thaw cycles. The homogenates are then centrifuged for 5 minutes at 5000xg to retrieve the supernatant.
- **Cell culture supernatant:** Centrifuge supernatant for 20 minutes to remove insoluble impurity and cell debris at 1000xg at 2 - 8°C. Collect the clear supernatant and carry out the assay immediately or aliquot and store at -20°C.
- **Other biological fluids:** Centrifuge samples for 20 min at 1000xg at 4°C. Collect the supernatant and carry out the assay immediately.
- End user should estimate the concentration of the target protein in the test sample first, and select a proper dilution factor to make the diluted target protein concentration fall in the optimal detection range of the kit.

VIII. Assay Protocol:

Note: Bring all reagents and samples to room temperature 30 minutes prior to the assay. It is recommended that all standards and samples be run at least in duplicate. A standard curve must be run with each assay.

1. Prepare all reagents, samples and standards as instructed in section VII.
2. Wash plate 2 times with **1X Wash Solution** before adding standard, sample and control wells.
3. Add 50 µl of each **standards** or **samples** into appropriate wells. Immediately add 50 µl **Biotin-labeled Antibody Working Solution** into each well. Cover with the Plate sealer we provided. Gently tap the plate to ensure thorough mixing. Incubate for 45minutes at 37°C.
4. Discard the solution and wash 3 times with **1X Wash Solution**. Wash by filling each well with Wash Buffer (350 µl) using a multi-channel pipette or autowasher. Let it soak for 1-2 minutes, and then remove all residual wash-liquid from the wells by aspiration. After the last wash, remove any remaining Wash Buffer by aspirating or decanting. Clap the plate on absorbent filter papers or other absorbent materials.
5. Add 0.1 ml of **SABC working solution** into each well, cover the plate and incubate at 37°C for 30 min.
6. Discard the solution and wash 5 times with **1X Wash Solution** as step 4.
7. Add 90 µl of **TMB substrate** into each well, cover the plate and incubate at 37 °C in dark within 15-30 min. The shades of blue should be seen in the first 3-4 wells by the end of incubation.
8. Add 50 µl of **Stop Solution** to each well. Read result at 450 nm within 20 minutes.

IX. CALCULATION:

For calculation, **(the relative O.D.450) = (the O.D.450 of each well) – (the O.D.450 of Zero well)**. The standard curve can be plotted as the relative O.D.450 of each standard solution (Y) vs. the respective concentration of the standard solution (X). The Human Estrogen concentration of the samples can be interpolated from the standard curve. If the samples measured were diluted, multiply the dilution factor to the concentrations from interpolation to obtain the concentration before dilution.

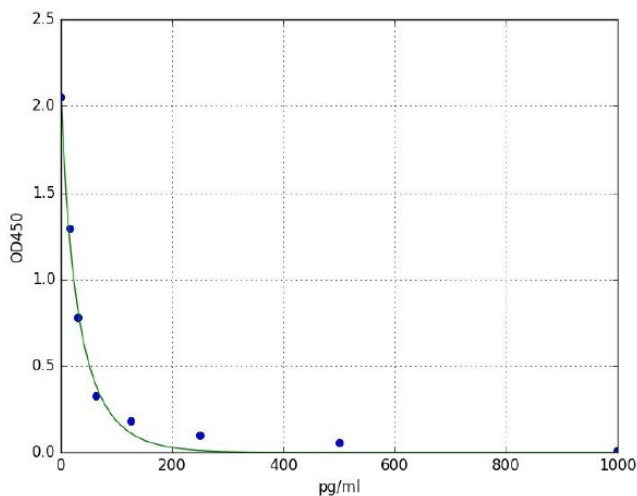


Figure: Typical Standard Curve: These standard curves are for demonstration only. A standard curve must be run with each assay.



X. RECOVERY:

Matrix	Recovery range (%)	Average (%)
serum(n=5)	95-102	99
EDTA plasma(n=5)	90-102	96
heparin plasma(n=5)	85-103	94

XI. LINEARITY:

Sample	1:2	1:4	1:8	1:16
serum(n=5)	88-102%	88-103%	89-103%	88-102%
EDTA plasma(n=5)	87-100%	84-96%	82-100%	88-95%
heparin plasma(n=5)	82-88%	81-93%	80-98%	81-89%

XII. RELATED PRODUCTS:

- Estrogen (Human) ELISA Kit (K4264)
- Estrogen (Mouse) ELISA Kit (K4265)
- Estrogen (Rat) ELISA Kit (K4266)
- Estrogen Receptor beta (ER β) (Human) ELISA Kit (K4268)
- Estrogen Receptor (ER α) (Human) ELISA Kit (K4267)