



LOXL2 (Human) ELISA Kit

(Catalog # E4897-100, 96 assays, Store at 4°C)

I. Introduction:

Lysyl oxidase-like 2 (LOXL2) belongs to the family of lysyl oxidases, whose function is to catalyze the formation of crosslinks of collagen and elastin in the extracellular matrix via oxidative deamination of peptidyl lysine residues. Increased expression of LOXL2 is associated with biological activities such as senescence, cell proliferation, migration, metastasis, epithelial-to-mesenchymal transition, invasion, and angiogenesis. Increased expression is associated with reduced survival in gastric, pancreatic, hepatocellular, and breast carcinoma. Currently, it is emerging as a potential therapeutic target in the treatment of cancer. LOXL2 has been demonstrated to play a critical role in idiopathic pulmonary fibrosis (IPF). Elevated levels of LOXL2 were observed in the serum of IPF patients. Additionally, LOXL2 promoted scarring of lung tissue, thus resulting in abnormal wound healing. Therefore, inhibition of LOXL2 could serve as an attractive target for the treatment of cancer as well as pulmonary diseases. BioVision's LOXL2 (Human) ELISA kit is based on the Sandwich ELISA principle to quantitatively measure the concentration of LOXL2 in human serum, plasma, and other biological fluids. Test samples, Standards, and Biotinylated Detection antibody are added to the wells pre-coated with capture antibody and then washed with Wash Buffer. The HRP-Streptavidin is added and any unattached conjugates are washed off using Wash Buffer. The HRP enzymatic reaction is detected by the addition of TMB-substrate. Finally, the reaction is terminated with an acidic stop solution. The color developed is proportional to the concentration of LOXL2 in the sample or standard.

II. Features and Benefits:

- Detection range: 37.5 - 2400 pg/ml
- Sensitivity: 22.5 pg/ml
- Assay Precision: Intra-Assay CV < 8% and Inter-Assay CV < 10%
- Recovery range: 85 - 105% for normal human serum and plasma samples
- This Sandwich ELISA is highly sensitive and highly specific for the detection of LOXL2 in human samples. There is no significant cross-reactivity or interference between LOXL2 and analogues

III. Sample Type:

Human Serum, Plasma, Tissue lysates and other biological fluids

IV. Kit Contents:

Components	E4897-100	Part Number	Storage Temp.
Micro ELISA plate	8 x 12 Strips	E4897-100-1	-20°C
Standard (Lyophilized) (2400 pg)	2 vials	E4897-100-2	-20°C
Sample/Standard Dilution Buffer	20 ml	E4897-100-3	4°C
Biotin-labeled Antibody	120 µl	E4897-100-4	4°C (Avoid light)
Antibody Dilution Buffer	10 ml	E4897-100-5	4°C
HRP-Streptavidin Conjugate (SABC)	120 µl	E4897-100-6	4°C (Avoid light)
SABC Dilution Buffer	10 ml	E4897-100-7	4°C
TMB Substrate Solution	10 ml	E4897-100-8	4°C (Avoid light)
Stop Solution	10 ml	E4897-100-9	4°C
Wash Buffer (25X)	30 ml	E4897-100-10	4°C
Plate Sealers	5	E4897-100-11	4°C

V. User Supplied Reagents and Equipment:

- Microplate reader capable of measuring absorbance at 450 nm
- 37°C incubator
- Precision pipettes with disposable tips
- Distilled or deionized water
- Clean eppendorf tubes for preparing standards or sample dilutions
- Absorbent paper

VI. Storage and Handling:

An unopened kit can be stored at 4°C for up to 6 months. If the kit is not used within 1 month, store the items separately according to the above-mentioned conditions once the kit is received

VII. Reagent and Sample Preparation:

Note: Prepare reagents within 30 minutes before the experiment

Before using the kit, spin tubes and bring down all components to the bottom of tubes

1. **Biotin-labeled Antibody working solution:** Prepare this working stock 1 hour prior to the start of the experiment. Calculate the total volume of the working solution: 0.1 ml/well x quantity of wells. Add 0.1 – 0.2 ml to the total volume. Dilute the Biotin-labeled antibody with Antibody Dilution Buffer at 1:100. Mix thoroughly.
2. **HRP-Streptavidin Conjugate (SABC):** Prepare this working stock 30 minutes prior to the start of the experiment. Calculate the total volume of the working solution: 0.1 ml/well x quantity of wells. Add 0.1 – 0.2 ml to the total volume. Dilute the SABC with SABC Dilution Buffer at 1:100. Mix thoroughly.
3. **Wash Buffer:** Dilute 25X Wash Buffer to 1X by adding 30 ml of 25X Wash Buffer and make up the volume to 750 ml with deionized/distilled water. If crystals present in the 25X Wash Buffer, warm it in water bath at 40°C. Mix it gently. The solution must be cooled to room temperature before use.
4. **Standard Preparation:**



- Add 1 ml Sample Dilution Buffer into one Standard tube (labeled as zero tube). Keep the tube at room temperature for 10 minutes. Mix thoroughly.
- Label 7 tubes with 1/2, 1/4, 1/8, 1/16, 1/32, 1/64 and blank respectively. Add 0.3 ml of the Sample Dilution Buffer into each tube. Add 0.3 ml of the above Standard solution (from zero tube) into 1st tube and mix them thoroughly.
- Transfer 0.3 ml from 1st tube to 2nd tube and mix them thoroughly. Transfer 0.3 ml from 2nd tube to 3rd tube and mix them thoroughly, and so on. **Sample Dilution Buffer** was used for the blank control. (Note: Please use Standard Solutions within 2 hours of preparation).

5. Sample Preparation:

Note: Isolate the test samples soon after collecting, then, analyze immediately (within 2 hours). Or aliquot and store at -20°C (≤ 1 month) or -80°C (≤ 2 months). Avoid multiple freeze-thaw cycles. The hemolytic samples are not suitable for this assay.

- **Serum:** Place whole blood sample at room temperature for 2 hours or put it at 2 - 8°C overnight and centrifugation for 20 minutes at approximately 1000xg. Collect the supernatant and carry out the assay immediately. Blood collection tubes should be disposable, non-pyrogenic, and endotoxin free.
- **Plasma:** Collect plasma using EDTA-Na₂ or heparin as an anticoagulant. Centrifuge samples for 15 minutes at 1000xg at 2 - 8°C within 30 minutes of collection. Collect the supernatant and carry out the assay immediately. Avoid hemolysis, high cholesterol samples.
- **Tissue homogenates:** As hemolytic blood may affect the assay result, it is necessary to remove residual blood by washing tissue with pre-cooling PBS buffer (0.01 M, pH 7.4). Mince tissue after weighing it and homogenize it in PBS (the volume depends on the weight of the tissue. Normally, 9 ml PBS would be appropriate to 1 gram tissue pieces. Some protease inhibitors are recommended to add into the PBS) with a glass homogenizer on ice. To further break the cells, you can sonicate the suspension with an ultrasonic cell disrupter or subject it to freeze-thaw cycles. The homogenates are then centrifuged for 5 minutes at 5000xg to get the supernatant. The total protein concentration was determined by BCA kit and the total protein concentration of each pore sample should not exceed 0.3 mg.
- **Cell culture supernatant:** Centrifuge supernatant for 20 minutes at 1000xg at 2 - 8°C to remove insoluble impurity and cell debris. Collect the clear supernatant and carry out the assay immediately.
- **Cell Culture Lysate:** Commercial RIPA kits are recommended to follow the instructions provided. Generally, 0.5 ml RIPA lysis buffer would be appropriate to 2x10⁶ cells, DNA must to be removed. The total protein concentration was determined by BCA kit and the total protein concentration of each pore sample should not exceed 0.3 mg.
- **Other biological fluids:** Centrifuge samples for 20 minutes at 1000xg at 4°C. Collect the supernatant and carry out the assay immediately.

Note: End user should estimate the concentration of the target protein in the test sample first, and select a proper dilution factor to make the diluted target protein concentration fall in the optimal detection range of the kit.

VIII. Assay Protocol:

Note: Bring all reagents and samples to room temperature 30 minutes prior to the assay.

It is recommended that all standards and samples be run at least in duplicate.

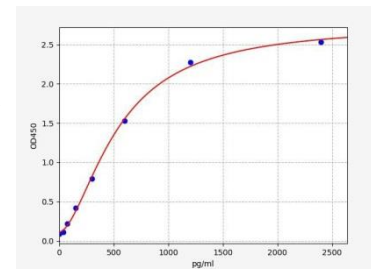
A standard curve should be run for each assay.

1. Prepare all reagents, samples and standards as instructed in section VII.
2. Wash plate 2 times with **1X Wash Buffer** before adding standard, sample and control wells.
3. Add 100 µl of each **standards** or **samples** into appropriate wells. Cover well and incubate for 1.5 hours at 37°C.
4. Remove the cover and discard the plate content. Wash the plate 2 times with **1X Wash Buffer** without letting the wells completely dry.
5. Add 0.1 ml of **Biotin-Detection antibody** work solution into the above wells. Seal the plate and incubate at 37°C for 60 minutes.
6. Discard the solution and wash 3 times with **1X Wash Buffer**. Wash by filling each well with Wash Buffer (350 µl) using a multi-channel pipette or autowasher. Let it soak for 1-2 minutes, and then remove all residual wash-liquid from the wells by aspiration. After the last wash, remove any remaining Wash Buffer by aspirating or decanting. Tap the plate on absorbent filter papers or other absorbent materials.
7. Add 0.1 ml of **SABC working solution** into each well, cover the plate and incubate at 37°C for 30 minutes.
8. Discard the solution and wash 5 times with **1X Wash Buffer** as step 6.
9. Add 90 µl of **TMB substrate** into each well, cover the plate and incubate at 37 °C in dark within 10-20 minutes. (Note: The reaction time can be shortened or extended according to the actual color change, but not more than 30 minutes. The reaction can be terminated when apparent gradient appeared in standard wells).
10. Add 50 µl of **Stop Solution** to each well. Read result at 450 nm within 20 minutes.

IX. Calculation:

For calculation, (the relative O.D.450) = (the O.D.450 of each well) – (the O.D.450 of Zero well). The standard curve can be plotted as the relative O.D.450 of each standard solution (Y) vs. the respective concentration of the standard solution (X). The target concentration of the samples can be interpolated from the standard curve. If the samples measured were diluted, multiply the dilution factor to the concentrations from interpolation to obtain the concentration before dilution.

Figure: Typical Standard Curve and OD values: These standard curves are for demonstration only. A standard curve must be run with each assay.





STD. (pg/ml)	OD-1	OD-2	Average	Corrected
0	0.089	0.091	0.09	0.000
37.5	0.108	0.112	0.11	0.02
75	0.216	0.222	0.219	0.129
150	0.416	0.428	0.422	0.332
300	0.784	0.806	0.795	0.705
600	1.504	1.548	1.526	1.436
1200	2.243	2.309	2.276	2.186
2400	2.498	2.57	2.534	2.444

X. Recovery:

Matrices mentioned below were spiked with certain level of LOXL2 and the recovery rates were calculated by comparing the measured value to the expected amount of LOXL2 in samples

Matrix	Recovery Range (%)	Average (%)
Serum (n=5)	85-102	94
EDTA Plasma (n=5)	85-104	97
Heparin Plasma (n=5)	86-102	95

XI. Linearity:

Linearity of the assay kit was determined by spiking samples and their serial dilutions with appropriate concentration of LOXL2. The results are represented as percentage of calculated concentration to the expected value.

Sample	1:2	1:4	1:8
Serum (n=5)	87-98%	85-104%	86-105%
EDTA Plasma (n=5)	82-97%	89-101%	86-101%
Heparin Plasma (n=5)	82-97%	80-86%	87-98%

XII. Related Products:

- HER2/ErbB2 (Human) ELISA Kit (E4357)
- AKT1/PKB (Human) ELISA Kit (K4166)
- TGF beta-1 (Human) ELISA Kit (E4508)
- c-jun (Human) ELISA Kit (K4198)
- SMAD3 (Human) ELISA Kit (K4200)