

ExoQuant™ Overall Exosome Capture and Quantification Assay Kit (human plasma, colorimetric)

(Catalog # K1201-100; 100 assays (96 well transparent immunoplate for colorimetric readings; Store at 4°C))

I. Introduction:

Exosomes are small endosome derived lipid nanoparticles (50-120 nm) actively secreted by exocytosis by most living cells. Exosome release occurs either constitutively or upon induction, under both normal and pathological conditions, in a dynamic, regulated and functionally relevant manner. Both the amount and molecular composition of released exosomes depend on the state of a parent cell. Exosomes have been isolated from diverse cell lines (hematopoietic cells, tumor lines, primary cultures, and virus infected cells) as well as from biological fluids in particular blood (e.g. serum and plasma from cancer patients) and other body fluids (broncho alveolar lavage fluid, pleural effusions, synovial fluid, urine, amniotic fluid, semen, saliva etc). Exosomes have pleiotropic physiological and pathological functions and an emerging role in diverse pathological conditions such as cancer, infectious and neurodegenerative diseases.

ExoQuant™ Kit is a patented double sandwich enzyme-linked immunoassay for quantitative and qualitative analysis of exosomes. It is a successful platform for exosomes quantification and characterization from small amount of human biological fluids (plasma, serum, urine, saliva) or cell media. It may be exploited to identify exosomes released by cancer cells in the plasma and urine of tumor patients in various disease conditions. ExoQuant™ consists of ELISA plates pre-coated with proprietary pan-exosome antibodies enabling specific capture of exosomes from different biological samples, including cell culture supernatants and human biological fluids. Quantification and characterization of exosomal proteins is subsequently performed using appropriate detection antibodies against exosome associated antigens that can be for either generic or cell/tissue-specific exosomes. The kit contains Lyophilized Exosome Standards for assay calibration. Lyophilized Exosome Standards, characterized for protein content and particle number allow the quantification of unknown sample by a standard calibration curve. Transparent and white plates are available depending on the downstream detection approach (colorimetric and luminometric respectively).

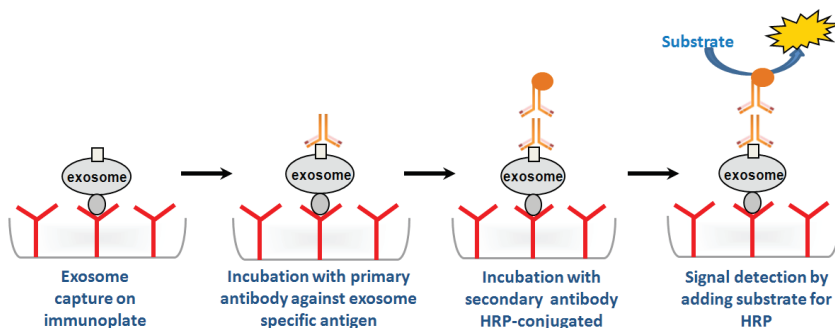


Figure 1. ExoQuant™ Exosome Capture and Quantification Assay Kit Principle.

II. Application:

- ExoQuant™ Kits ensure dose-dependent exosome detection in a variety of samples. No initial exosome purification required. The quantification can be both relative and absolute as the assay calibration enables the calculation of the approximate exosome quantity for each sample.
- Exosome comprehensive profiling.
- Pre-clinical research on non-invasive biomarkers for detection and monitoring of a number of pathological conditions (inflammation, cancer, neurodegeneration, etc). User friendly and suitable for multiple marker analyses.
- Up to 100 µl of biological sample can be loaded per well. Unfractionated plasma sample can be directly used for capture.

III. Sample Type:

- Human biological fluids: Plasma.

IV. Kit Contents (for overall exosomes capture and quantification from human plasma):

Components	Description	K1201-100	Part Number
Sample buffer (1X)	Buffer for antibody dilution and incubation	2 bottles (2 x 10 ml)	K1201-100-1
Washing buffer (25X)	Buffer for washing plate	1 bottle (25 ml)	K1201-100-2
Primary antibody	α-CD9 mouse antibody	1 vial (20 µl)	K1201-100-3
HRP conjugated	HRP-conjugated secondary antibody	1 vial (8 µl)	K1201-100-4
Substrate chromogenic solutions	Substrate for chromogenic detection	1 bottle (10 ml)	K1201-100-5
Stop solution	1M Sulphuric Acid (H ₂ SO ₄)	1 bottle (10 ml)	K1201-100-6
Exosome Standards	Lyophilized exosomes from healthy donors (Plasma)	2 vials (2 x 100 µg)	K1201-100-7
Immunoplate (Transparent)	Standard multiwell plates 96-well format where assays can be conducted as singletons and/or multiple wells	1 plate	K1201-100-8



V. User Supplied Reagents and Equipment:

- Single-use and/or pipettes with disposable tips 2-100 μ l
- Polypropylene tubes
- Pipettes 1 ml and 5 ml for reagent preparation
- Deionized water
- PBS
- Plate shaker
- Humidified chamber or incubator at 37°C
- Disposable pipetting reservoirs
- Microplate reader
- ELISA sealing film or parafilm

VI. Shipment and Storage:

All the reagents are shipped and stored at 4°C for up to 24 months, if unopened. Briefly centrifuge small vials prior to opening. DO NOT FREEZE!

VII. Reagent Preparation and Storage Conditions:

- Dilute the 25X Washing Buffer to 1X with deionized water. If crystals are observed, dissolve them by warming up the vial at 37°C the solution before preparing a dilution.
- Reconstitute lyophilized exosome standard by adding 100 μ l of deionized water, pipette the solution up and down 10-15 times, avoiding bubbles. Vortex the reconstituted standard for 60 sec. Briefly centrifuge the tubes containing standards to ensure that the solution is collected at the bottom of the tube. Pipette the solution up and down 10 times, again avoiding any bubbles.
- If purified exosome samples are analyzed, use 1X PBS to adjust the volume and concentration of samples (overall volume/well is 100 μ l).
- In general, unfractionated samples are analyzed without dilutions (100 μ l/well). If OD values observed, are beyond the range of standard curve. Dilute the samples using 1X PBS.
- Detection antibody should be diluted to 500-fold in sample buffer.
- HRP-conjugated secondary antibodies should be diluted to 2000-fold in sample buffer.
- Substrate solution for colorimetric readings and stop solution are ready to use.
- The plate is packed in an opaque aluminum pouch which complies with the food and pharmaceutical regulation. The pouch is easy to open and is re-sealable by zip closure.
- ELISA strips: Unused strips should be placed back in the foil pouch with the included desiccant pack, resealed and stored at 4°C for up to one month.
- Exosome standards: The remaining reconstituted standard stock solution should be aliquoted into polypropylene vials (preferably low binding) and stored at -20°C for up to one month or at -80°C for up to six months. Strictly avoid repeated freeze-and-thaw cycles.
- Store opened and diluted reagents at 4°C up to 24 months if unopened. After opening, use within one month.

VIII. ExoQuant™ Assay Protocol:

1. **Human Plasma sample preparation:** Prepare samples by 3 centrifugation steps to eliminate red blood cells and cellular debris. After each step, transfer the supernatant to a new tube and discard the pellet.
 - a) 10 min at 300g at 4°C (save supernatant; discard pellet).
 - b) 20 min at 1200g at 4°C (save supernatant; discard pellet).
 - c) 30 min at 10,000g at 4°C (save supernatant; discard pellet). Human plasma can be diluted 1/1 using 1X PBS prior to loading onto ELISA plates.
2. **Reconstituted Exosome Standard for calibration curve:** Bring all the reagents to room temperature and briefly vortex the tubes before use. The positive control is represented by the highest concentration of exosome standards. The negative control is represented by sample buffer or 1X PBS for analysis of purified exosomes and sample matrix (e.g. exosome depleted cell culture supernatant or plasma) for unfractionated samples.
 - a) Reconstitute lyophilized exosome standard by adding 100 μ l of deionized water in each vial.
 - b) Pipette the solution up and down 10-15 times, avoiding bubbles.
 - c) Vortex the reconstituted standard for 60 sec. Briefly centrifuge the tubes to spin down the contents and ensure that the solution is collected at the bottom of the tube.
 - d) Pipette the solution up and down 10 times, again avoiding any bubbles.
 - e) Briefly centrifuge again. Add 100 μ l of 1X PBS to reach a final volume of 200 μ l per vial.
3. **Standard Curve Preparation:** Standard dilutions are prepared directly in the strips. Please use the exosome stock solution prepared as indicated above to perform six two-fold serial dilutions using 1X PBS (see figure below). The standard concentrations in the wells will be represented as 50 μ g, 25 μ g, 12.5 μ g, 6.25 μ g, 3.125 μ g, 1.5625 μ g and 0.78125 μ g respectively.
 - a) Add 200 μ l of the reconstituted exosome solution to wells A1 and A2 (2 wells only).
 - b) Add 100 μ l of 1X PBS to wells B1 to H2 (14 wells).
 - c) Serial dilution (stop at G1 and G2).
 - d) Transfer 100 μ l of A1 into B1 and mix.
 - e) Transfer 100 μ l of B1 into C1 and mix.
 - f) Transfer 100 μ l of C1 into D1 and mix.
 - g) Transfer 100 μ l of D1 into E1 and mix.
 - h) Transfer 100 μ l of E1 into F1 and mix.
 - i) Transfer 100 μ l of F1 into G1 and mix.

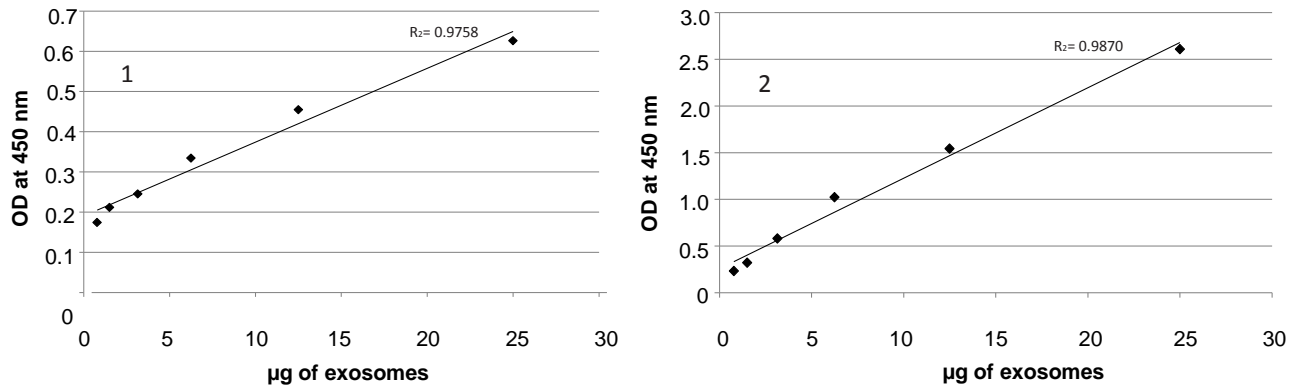


Figure 3. CD9 Titration of COLO1 (1) and plasma (2) exosomes. Example of standard curves obtained. Exosome standard preparation derived from (1) COLO1 Cell Culture Supernatant and (2) Plasma of healthy donors. This standard curve is for demonstration only. For quantification purposes, a standard curve must be obtained with every assay.

10. Sensitivity: The sensitivity of the ExoQuant™ was compared to Western blot. The data reported in Figure 4 and 5 demonstrate that the sensitivity of the ExoQuant™ is higher than that of Western blotting. Figure 5 shows that 10 µg of lyophilized exosomes is equivalent to 0.1 ng of the recombinant exosomal protein (CD9). Since the standard curve's lower concentration is 0.39 µg of lyophilized exosomes (Figure 4), the sensitivity of our test is around 39 pg of protein equivalent.

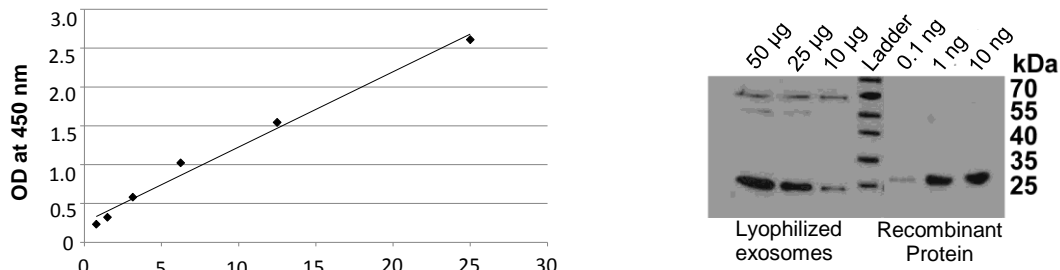


Figure 4. CD9 titration of plasma healthy donor exosome standards.

Figure 5. CD9 marker detection by Western Blotting on lyophilized exosomes from human plasma and the recombinant CD9 protein.

11. Reproducibility: Intra Assay (within run) CV (%) < 10 Inter Assay (interplate run) CV (%) < 13. Coefficient of variation (CV) is expressed as a percentage of variance to the mean calculated for intra assay reproducibility evaluation by assessing at least 4 replicates of three different standard preparations containing different exosome concentrations. Subsequently, assay to-assay reproducibility was assessed by comparing mean absorbance for the same samples on independent plates tested by different operators.

IX. Related Products:

Products/Catalog Number
ExoQuant™ Overall Exosome Capture and Quantification Assay Kit (human plasma, Colorimetric) # K1201-100
ExoQuant™ Overall Exosome Capture and Quantification Assay Kit (human urine, Colorimetric) # K1202-100
ExoQuant™ Overall Exosome Capture and Quantification Assay Kit (human serum, Colorimetric) # K1203-100
ExoQuant™ Tumor-derived Exosome enrichment and Quantification Assay Kit (biological fluids/cell media, Colorimetric) # K1204-100
ExoQuant™ Overall Exosome Capture and Quantification Assay Kit (Cell media, Colorimetric) # K1205-100
ExoQuant™ Overall Exosome Capture and Quantification Assay Kit (human plasma, Luminometric) # K1206-100
ExoQuant™ Overall Exosome Capture and Quantification Assay Kit (human urine, Luminometric) # K1207-100
ExoQuant™ Overall Exosome Capture and Quantification Assay Kit (human serum, Luminometric) # K1208-100
ExoQuant™ Tumor-derived Exosome enrichment and Quantification Assay Kit (biological fluids/cell media, Luminometric) # K1209-100

