

Twort's Counterstaining Kit

(Cat# K1436-125; Store at RT)

I. Introduction:

The **Twort's Counterstaining Kit** is designed for histological procedures to provide contrast for easier visualization of tissue sections.

Nuclei: Red Cytoplasm: Light Green

II. Application:

- Histological applications
- For *in vitro* diagnostic use

III. Sample Type:

- Any well-fixed tissue sections.
- Cytology Smear.

IV. Kit Contents:

| Components | K1436-125 | Part Number | Storage Temperature |
|------------------------------|-----------|-------------|---------------------|
| Twort's Neutral Red (Part A) | 125 ml | K1436-125-1 | RT |
| Twort's Fast Green (Part B) | 30 ml | K1436-125-2 | RT |
| Acetic Alcohol Solution (2%) | 250 ml | K1436-125-3 | RT |

V. User Supplied Reagents and Equipment:

- Deionized/Distilled water
- Coplin jars
- Forceps
- Absolute alcohol
- Synthetic resin

VI. Shipment and Storage:

All the reagents are shipped and stored at room temperature.

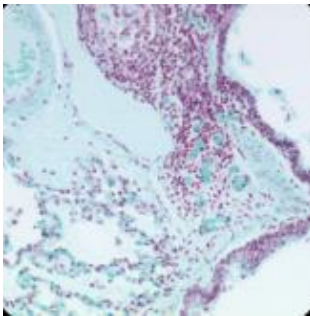
VII. Reagent Preparation:

- Do not use past expiration date.
- Use caution when handling reagents.
- Do not use if reagents become cloudy.
- Non-Sterile

VIII. Procedure (Standard):

1. Deparaffinize sections if necessary and hydrate to distilled water.
2. Stain slide in Working Twort's Counterstain for 5-10 min. Use once and discard.
3. Rinse quickly in distilled water. Note: for greatest retention of stain, air dry, clear and mount at this point. Alcohol and decolorizer solutions can quickly remove stains.
4. Dip once in absolute alcohol.
5. Decolorize quickly and carefully in Acetic Alcohol Solution.
6. Dip two times in absolute alcohol.
7. Clear, and mount in synthetic resin.

IX. Data:



Twort's Counterstaining Kit

FOR RESEARCH USE ONLY! Not to be used on humans.