



# Papanicolaou Staining Kit

(Cat# K1440-30, -500; PAP stain kit; Store at RT)

## I. Introduction:

The Papanicolaou (PAP) Staining Kit is designed to differentiate between a variety of cells in vaginal smears for detection of vaginal, uterine and cervical cancer. In addition, this procedure is valuable for staining a variety of other bodily secretions and cell smears. The procedure was developed in the early 1940's by George Papanicolaou.

- Nuclei: Blue
- High Keratin Cells: Orange
- Superficial Cells: Pink
- Erythrocytes: Dark Pink
- Parabasal Cells: Blue/Green
- Intermediate Cells: Blue/Green
- Metaplastic Cells: May contain both Blue/Green and Pink

## II. Application:

- Histological applications.
- Staining a variety of other bodily secretions and cell smears.
- In-Vitro Diagnostic use

## III. Sample Type:

- Gynecological Smear.
- Any Superficial Cell Smear.

## IV. Kit Contents:

Components	K1440-30	K1440-500	Part Number	Storage Temperature
Hematoxylin, Mayer's (Lillie's Modification)	30 ml	500 ml	K1440-XX-1	18-25°C
OG-6 Solution	30 ml	500 ml	K1440-XX-2	18-25°C
EA-50 Stain Solution	30 ml	500 ml	K1440-XX-3	18-25°C

## V. User Supplied Reagents and Equipment:

- Deionized/Distilled water
- Forceps
- Absolute alcohol
- Synthetic resin

## VI. Shipment and Storage:

All the reagents are shipped and stored at room temperature.

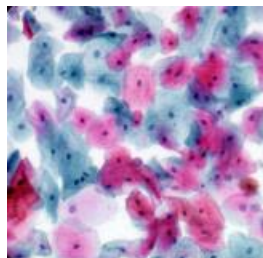
## VII. Reagent Preparation:

- Do not use past expiration date.
- Use caution when handling reagents.
- Non-sterile

## VIII. Procedure:

- Place slide in 95% alcohol for 5 minutes.
- Place slide in 70% alcohol for 5 minutes.
- Place slide in distilled water for 2 minutes.
- Apply adequate Hematoxylin, Mayer's (Lillie's Modification) to completely cover cell smear and incubate for 5 minutes.
- Rinse slide 1 time in distilled water to remove excess stain.
- Rinse slide in tap water for 2 minutes.
- Rinse slide in 2 changes of distilled water.
- Dip slide several times in 95% alcohol and blot excess off.
- Apply adequate OG-6 Stain Solution to completely cover cell smear to excess and incubate for 2 minutes.
- Rinse slide gently using absolute alcohol.
- Apply adequate EA-50 Stain Solution to completely cover cell smear to excess and incubate for 3 minutes. *Note: Do not allow EA-50 Stain Solution to evaporate completely. Add additional drops as needed.*
- Rinse slide gently using absolute alcohol.
- Quickly dehydrate slide in 3 changes of absolute alcohol.
- Clear slide and mount in synthetic resin.

## IX. Data:



PAP Staining Kit

FOR RESEARCH USE ONLY! Not to be used on humans.