

# Amyloid Staining Kit

04/21

(Catalog # K1486-30, -500; 30 ml, 500 ml; Store at RT)

## I. Introduction:

**BioVision's Amyloid Stain Kit (Congo Red)** is used for the histological visualization of amyloid in tissue sections. Examination under a polarizing microscope results in green birefringence of amyloid.

This kit stains as given below:

**Amyloid: Red to Pink; Erythrocytes: Light Orange; Eosinophil Granules: Orange to Red; Nuclei: Blue**

## II. Applications: Histology

## III. Sample type: Formalin-Fixed Paraffin-Embedded (FFPE) tissue specimens

**Control Tissue** (not provided): Freshly cut FFPE sections containing amyloid. It has been reported that birefringence of pre-cut sections weakens over time. Cut sections of 8-10 microns for optimal visualization of amyloid deposit birefringence.

## IV. Contents:

Components	K1486-30	K1486-500	Part Number
Congo Red Solution	2 x 30 ml	500 ml	K1486-XX-1
Hematoxylin	30 ml	500 ml	K1486-XX-2
Bluing Reagent	30 ml	500 ml	K1486-XX-3

## V. User Supplied Reagents and Equipment:

- Distilled water
- Coplin jars/Staining jars
- Plastic forceps
- Absolute alcohol
- Synthetic resin

## VI. Shipment and Storage:

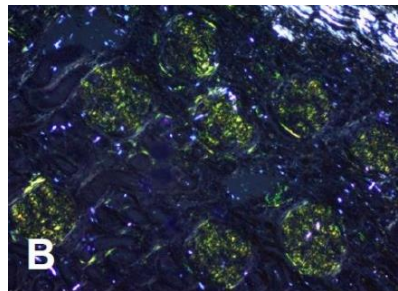
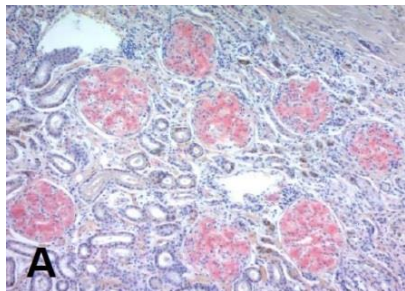
All the reagents are stored at room temperature (RT).

## VII. Reagent preparation:

- Use caution when handling reagents.
- Keep away from open flame.
- Congo Red Solution is flammable.
- Use in chemical fume hood whenever possible.

## VIII. Protocol:

1. **Deparaffinize** sections and hydrate to distilled water.
2. Stain slide with **Hematoxylin** for 5 min.
3. Rinse slide in tap water.
4. Incubate slide in **Bluing Reagent** for 30 sec.
5. Rinse slide in distilled water.
6. Briefly rinse slide in **absolute alcohol** for 3-5 sec.
7. Pour **Congo Red Solution** into a staining jar and place slide in the staining jar for 20 min. Make sure that there is enough stain to completely cover tissue. Staining in smaller volumes of Congo Red Solution by pipetting or pouring on horizontal slides may cause non-specific staining.
8. Rinse excess stain off the slide with **absolute alcohol**.
9. **Dehydrate** slide in absolute alcohol for another 30 sec.
10. Clear and **mount** in synthetic resin.



**Figures A and B** show amyloidosis in canine kidney using Congo Red (Cat. No. K1486) and viewed under Brightfield and Polarized light respectively.



**IX. Related Products:**

<b>BioVision Product Name</b>	<b>Cat. No.</b>	<b>Sizes</b>
Gram Staining Kit	K1428	30 ml, 125 ml
GMS Staining Kit	K1427	125 ml
Fite's Staining Kit	K1425	125 ml
Modified Gram Staining Kit	K1429	30 ml, 125 ml
Pneumocystis Stain Kit	K1434	30 ml, 125 ml
Twort's Counterstain Kit	K1436	125 ml
Wright-Giemsa Staining Kit	K1439	30 ml, 500 ml
Warthin-Starry Staining Kit	K1437	125 ml

***FOR RESEARCH USE ONLY! Not to be used on humans.***