

c-jun (Human) ELISA Kit

rev 06/16

(Catalog # K4198-100, 100 assays, Store at 4°C)

I. Introduction:

Responsible for the deacetylation of lysine residues on the N-terminal part of the core histones (H2A, H2B, H3 and H4). Histone deacetylation gives a tag for epigenetic repression and plays an important role in transcriptional regulation, cell cycle progression and developmental events. Histone deacetylases act via the formation of large multiprotein complexes. Forms transcriptional repressor complexes by associating with MAD, SIN3, YY1 and N-COR. BioVision's HDAC2 ELISA kit is a sandwich ELISA assay for the quantitative measurement of human HDAC2 in serum, plasma and cell culture supernatants. The density of color is proportional to the amount of HDAC2 captured from the samples.

II. Application:

This ELISA kit is used for *in vitro* quantitative determination of Human HDAC2.

Detection Range: 0.781 - 50 ng/ml

Sensitivity: < 0.469 ng/ml

III. Sample Type:

Human serum, plasma, tissue homogenates and other biological fluids.

IV. Kit Contents:

Components	K4198-100	Part No.
Micro ELISA Plate	8 X 12 strips	K4198-100-1
Lyophilized Standard	2 vials	K4198-100-2
Sample / Standard dilution buffer	20 ml	K4198-100-3
Biotin- detection antibody (Concentrated)	120 µl	K4198-100-4
Antibody dilution buffer	10 ml	K4198-100-5
HRP-Streptavidin Conjugate (SABC) (Avoid light)	120 µl	K4198-100-6
SABC dilution buffer	10 ml	K4198-100-7
TMB substrate (Avoid light)	10 ml	K4198-100-8
Stop Solution	10 ml	K4198-100-9
Wash buffer (25X)	30 ml	K4198-100-10
Plate sealers	5	K4198-100-11

V. User Supplied Reagents and Equipment:

- Microplate reader capable of measuring absorbance at 450 nm
- 37°C incubator
- Precision pipettes with disposable tips
- Distilled or deionized water
- Clean eppendorf tubes for preparing standards or sample dilutions
- Absorbent paper

VI. Storage and Handling:

The entire kit may be stored at 4°C for up to 6 month from the date of shipment. Avoid freeze-thaw cycles.

VII. Reagent and Sample Preparation:

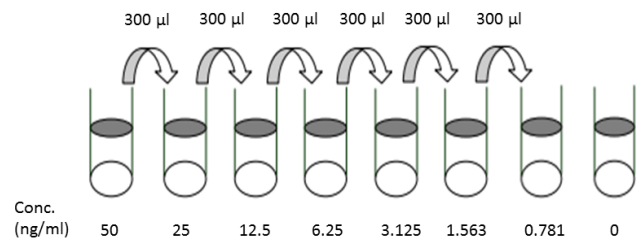
Note: Prepare reagents within 30 minutes before the experiment.

Before using the kit, spin tubes and bring down all components to the bottom of tubes.

1. **Biotin- detection antibody working solution:** Calculate the total volume of the working solution: 0.1 ml / well x quantity of wells with additional 0.1 - 0.2 ml of the total volume. Dilute the Biotin- detection antibody with Antibody dilution buffer at 1:100 and mix thoroughly.
2. **HRP-Streptavidin Conjugate (SABC):** Calculate the total volume of the working solution: 0.1 ml / well x quantity of wells with additional 0.1 - 0.2 ml of the total volume. Dilute the SABC with SABC dilution buffer at 1:100 and mix thoroughly.
3. **Wash Buffer:** Dilute 30 mL of Concentrated Wash Buffer into 750 mL of Wash Buffer with deionized or distilled water. Put unused solution back at 4°C. If crystals have formed in the concentrate, warm it with 40°C water bath and mix it gently until the crystals have completely dissolved. The solution should be cooled to room temperature before use.

4. Standard Preparation:

- Reconstitute the lyophilized HDAC2 standard by adding 1 ml of Standard/Sample Dilution Buffer to make the 50 ng/ml standard stock solution. Use within 2 hours after reconstituting.
- Allow solution to sit at room temperature for 10 minutes, then gently vortex to mix completely.
- Prepare 0.6 ml of 25 ng/ml top standard by adding 0.3 ml of the above stock solution in 0.3 ml of Standard/Sample Dilution



FOR RESEARCH USE ONLY! Not to be used on humans.



Buffer. Perform 2-fold serial dilutions of the top standards to make the standard curve within the range of this assay.

- Suggested standard points are: 50, 25, 12.5, 6.25, 3.125, 1.563, 0.78, 0 ng/ml

5. Sample Preparation:

Note: Samples to be used within 5 days may be stored at 4°C, otherwise samples must be stored at -20°C (≤1 month) or -80°C (≤2 months) to avoid loss of bioactivity and contamination. Avoid multiple freeze-thaw cycles.

- **Serum:** Coagulate the serum for 1 hour at room temperature or overnight at 4°C. Centrifuge at approximately 1000xg for 20 min. Analyze the serum immediately or aliquot and store at -20°C.
- **Plasma:** Collect plasma with heparin or EDTA as the anticoagulant. Centrifuge for 15 min at 2-8°C at 1500 x g within 30 min of collection. For eliminating the platelet effect, suggesting that further centrifugation for 10 min at 2-8°C at 10000xg. Analyze immediately or aliquot and store frozen at -20°C.
- **Tissue homogenates:** Rinse the tissues with ice-cold PBS (0.01M, pH=7.4) to remove excess hemolysis blood thoroughly. Tissue pieces should be weighed and then minced to small pieces which will be homogenized in PBS (the volume depends on the weight of the tissue. 9 mL PBS would be appropriate for 1 g of tissue. Some protease inhibitor is recommended to add into the PBS.) with a glass homogenizer on ice. To further break the cells, you can sonicate the suspension with an ultrasonic cell disrupter or subject it to freeze-thaw cycles. The homogenates are then centrifuged for 5 minutes at 5000xg to retrieve the supernatant.
- **Cell culture supernatant:** Centrifuge supernatant for 20 minutes to remove insoluble impurity and cell debris at 1000xg at 2 - 8°C. Collect the clear supernatant and carry out the assay immediately or aliquot and store at -20°C.
- **Other biological fluids:** Centrifuge samples for 20 min at 1000xg at 4°C. Collect the supernatant and carry out the assay immediately.
- End user should estimate the concentration of the target protein in the test sample first, and select a proper dilution factor to make the diluted target protein concentration fall in the optimal detection range of the kit.

VIII. Assay Protocol:

Note: Bring all reagents and samples to room temperature 30 minutes prior to the assay.

It is recommended that all standards and samples be run at least in duplicate.

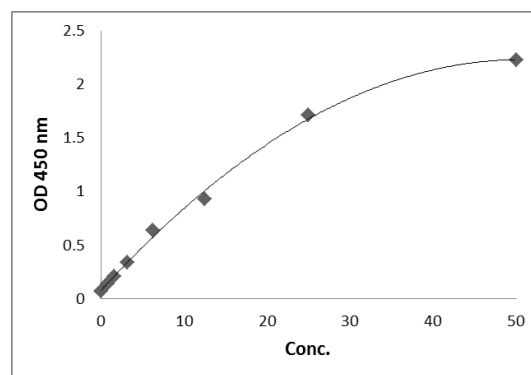
A standard curve must be run with each assay.

1. Prepare all reagents, samples and standards as instructed in section VII.
2. Wash plate 2 times with **1X Wash Solution** before adding standard, sample and control wells.
3. Add 100 µl of each **standards** or **samples** into appropriate wells. Cover well and incubate for 1.5 hours at 37°C.
4. Remove the cover and discard the plate content without washing or letting the wells completely dry.
5. Add 0.1 ml of **Biotin-detection antibody** work solution into the above wells. Seal the plate and incubate at 37°C for 60 min.
6. Discard the solution and wash 3 times with **1X Wash Solution**. Wash by filling each well with Wash Buffer (350 µl) using a multi-channel pipette or autowasher. Let it soak for 1-2 minutes, and then remove all residual wash-liquid from the wells by aspiration. After the last wash, remove any remaining Wash Buffer by aspirating or decanting. Clap the plate on absorbent filter papers or other absorbent materials.
7. Add 0.1 ml of **SABC working solution** into each well, cover the plate and incubate at 37°C for 30 min.
8. Discard the solution and wash 5 times with **1X Wash Solution** as step 6.
9. Add 90 µl of **TMB substrate** into each well, cover the plate and incubate at 37 °C in dark within 15-30 min. The shades of blue should be seen in the first 3-4 wells by the end of incubation.
10. Add 50 µl of **Stop Solution** to each well. Read result at 450 nm within 20 minutes.

IX. CALCULATION:

For calculation, **(the relative O.D.450) = (the O.D.450 of each well) – (the O.D.450 of Zero well)**. The standard curve can be plotted as the relative O.D.450 of each standard solution (Y) vs. the respective concentration of the standard solution (X). The Human HDAC2 concentration of the samples can be interpolated from the standard curve. If the samples measured were diluted, multiply the dilution factor to the concentrations from interpolation to obtain the concentration before dilution.

Figure: Typical Standard Curve:
These standard curves are for demonstration only. ($R^2 = 0.9975$) A standard curve must be run with each assay.



X. RELATED PRODUCTS:

- KinaseSTAR JNK Activity Assay Kit (Cat. No. K431-40)
- KinaseSTAR JNK Activity Screening Kit (Cat. No. K430-40)
- c-Jun antibody (Cat. No. 3009-100)
- JNK Antibody (Cat. No. 3701-100)
- JNK-IN-8 (Cat. No 2729-5, -25)
- Phospho-c-Jun (Ser73) Antibody (Cat. No. 3502-100)
- Phospho-JNK/SAPK Antibody (Cat. No. 3589-100)

FOR RESEARCH USE ONLY! Not to be used on humans.