

QuickDetect™ Total Cholesterol (Human) ELISA Kit

rev 05/20

(Catalog # K4431-100, 100 assays, Store at 4°C)

I. Introduction:

Cholesterol, is an organic molecule, a sterol (or modified steroid), a type of lipid molecule, and is biosynthesized by all animal cells, in which it is an essential structural component of animal cell membranes that is required to maintain both membrane structural integrity and fluidity. Cholesterol enables animal cells to dispense with a cell wall, thereby allowing animal cells to change shape and animals to move. Total cholesterol is a measure of the total amount of cholesterol in blood, including low-density lipoprotein (LDL) cholesterol and high-density lipoprotein (HDL) cholesterol. BioVision's QuickDetect™ total cholesterol ELISA kit is a sandwich ELISA assay for measuring the quantity of human total cholesterol in serum, plasma and cell culture and other biological fluid. The entire process can be performed within 90 minutes with fewer incubation and wash steps respectively, resulting less errors and more consistent results.

II. Application:

This ELISA kit is used for *in vitro* quantitative determination of total cholesterol.

Detection Range: 1.25 - 20 mmol/L

Sensitivity: < 0.1 mmol/L

Assay Precision: Intra-Assay: CV < 10%; Inter-Assay: CV < 12% (CV (%) = SD/mean X 100)

Cross Reactivity: No significant cross-reactivity or interference between this analyte and its analogues was observed.

III. Specificity:

Human

IV. Sample Type:

Serum, plasma, urine, cell culture samples, biological fluid.

V. Kit Contents:

Components	K4431-100	Part No.
Micro ELISA strip-plate	1	K4431-100-1
Standard (40 mmol/L)	0.5 ml	K4431-100-2
Standard diluent	6 ml	K4431-100-3
HRP- Conjugate reagent	10 ml	K4431-100-4
Sample diluent	6 ml	K4431-100-5
Chromogen Solution A	6 ml	K4431-100-6
Chromogen Solution B	6 ml	K4431-100-7
Stop Solution	6 ml	K4431-100-8
Wash buffer (20X)	25 ml	K4431-100-9
Plate sealers	2	K4431-100-10

VI. User Supplied Reagents and Equipment:

- Microplate reader capable of measuring absorbance at 450 nm
- 37°C incubator
- Precision pipettes with disposable tips
- Distilled or deionized water
- Clean eppendorf tubes for preparing standards or sample dilutions
- Absorbent paper

VII. Storage and Handling:

The entire kit may be stored at 4°C in dark for up to 6 months from the date of shipment. Avoid freeze-thaw cycles.

VIII. Reagent Preparation:

Note: Prepare reagents within 30 minutes before the experiment. Before using the kit, spin tubes and bring down all components to the bottom of tubes.

1. **Wash Buffer:** Dilute the concentrated washing buffer (20X) with distilled water.

2. Standard Preparation:

Ten wells are set for standards in a Microelisa stripplate. In Well 1 and Well 2, 50 µl Standard solution and 50 µl Standard Dilution buffer are added and mixed well. In Well 3 and Well 4, 50 µl solution from Well 1 and Well 2 are added respectively. Then 50 µl Standard Dilution buffer are added and mixed well. In Well 5 and Well 6, 50 µl solution from Well 3 and Well 4 are added respectively. Then 50 µl Standard Dilution buffer are added and mixed well. In Well 7 and Well 8, 50 µl solution from Well 5 and Well 6 are added respectively. Then 50 µl Standard Dilution buffer are added and mixed well. In Well 9 and Well 10, 50 µl solution from Well 7 and Well 8 are added respectively. Then 50 µl Standard Dilution buffer are added and mixed well. 50 µl solution is discarded from Well 9 and Well 10. After dilution, the total volume in all the wells are 50 µl and the concentrations are 20 mmol/L, 10mmol/L, 5mmol/L, 2.5 mmol/L and 1.25 mmol/L respectively.

FOR RESEARCH USE ONLY! Not to be used on humans.

3. Sample Preparation:

Note: Sample extraction and ELISA assay should be performed as soon as possible after sample collection. If ELISA assay can not be performed immediately, samples can be stored at -20°C. Avoid multiple freeze-thaw cycles. Samples with NaN₃ should be avoided for this assay.

- **Serum:** After collection of the whole blood, allow the blood to clot by leaving it undisturbed at room temperature. This usually takes 10-20 minutes. Remove the clot by centrifuging at 2,000-3,000 rpm for 20 minutes. If precipitates appear during reservation, the sample should be centrifuge again.
- **Plasma:** Collect the whole blood into tubes with anticoagulant (EDTA or citrate). After incubated at room temperature for 10-20 minutes, tubes are centrifuged for 20 min at 2,000-3,000 rpm. Collect the supernatant carefully as plasma samples. If precipitates appear during reservation, the sample should be centrifuge again.
- **Urine:** Collect urine into aseptic tubes. Collect the supernatant carefully after centrifuging for 20 min at 2,000-3,000 rpm. If precipitates appear during reservation, the sample should be centrifuge again. The preparation procedure of cerebrospinal fluid and pleuroperitoneal fluid is the same as that of urine sample.
- **Cell Samples:** If you want to detect the secretions of cells, collect culture supernatant into aseptic tubes. Collect the supernatant carefully after centrifuging for 20 min at 2,000-3,000 rpm. If you want to detect intracellular components, dilute the cells to 1X100/ml with PBS (pH 7.2-7.4). The cells were destroyed to release intracellular components by repeated freezing and thawing. Collect the supernatant carefully after centrifuging for 20 min at 2,000-3,000 rpm. If precipitates appear during reservation, the sample should be centrifuge again.
- **Tissue Samples:** Tissue samples are cut, weighed, frozen in liquid nitrogen and stored at -80°C for future use. The tissue samples were homogenized after adding PBS (pH 7.4). Samples should be operated at 4°C. Collect the supernatant carefully after centrifuging for 20 min at 2,000-3,000 rpm. Aliquot the supernatant for ELISA assay and future use.
- End user should estimate the concentration of the target protein in the test sample first, and select a proper dilution factor to make the diluted target protein concentration fall in the optimal detection range of the kit.

IX. Assay Protocol:

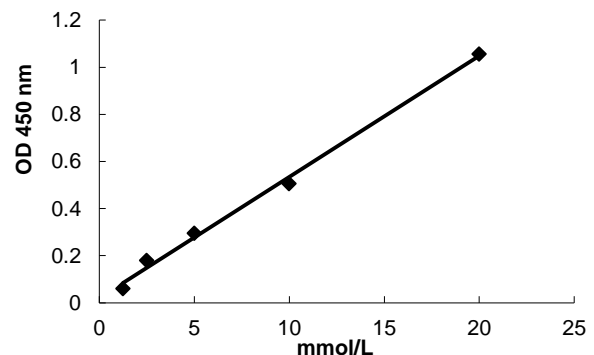
Note: Bring all reagents and samples to room temperature 30 minutes prior to the assay. It is recommended that all standards and samples be run at least in duplicate. A standard curve must be run with each assay.

1. Prepare all reagents, samples and standards as instructed in section VIII.
2. In sample wells, add 40 μ l Sample dilution buffer and 10 μ l samples are added (dilution factor is 5). Leave a well empty as blank control. Samples should be loaded onto the bottom without touching the well wall. Mix well with gentle shaking.
3. Add HRP-Conjugate reagent 100 μ l to each well, except blank well. Incubate 60 min at 37°C after sealed with plate sealer.
4. Remove plate sealer, aspirate and refill with the wash solution. Discard the wash solution after resting for 30 seconds. Repeat the washing procedure for 5 times.
5. Add 50 μ l Chromogen Solution A and 50 μ l Chromogen Solution B to each well, mix with gently shaking and incubate at 37°C for 15 minutes in dark.
6. Add 50 μ l stop solution to each well to terminate the reaction. The color in the well should change from blue to yellow.
7. Read absorbance O.D. at 450nm within 15 minutes after adding stop solution. The OD value of the blank control well is set as zero.

X. CALCULATION:

Known concentrations of Human total cholesterol Standard and its corresponding reading OD is plotted respectively. The concentration of Human total cholesterol in sample is determined by plotting the sample's O.D. on the X-axis. The original concentration is calculated by multiplying the dilution factor.

Figure: Typical Standard Curve: These standard curves are for demonstration only. A standard curve must be run with each assay.



XI. RELATED PRODUCTS:

- QuickDetect™ High Density Lipoprotein Cholesterol (HDL-C) (Human) ELISA Kit (Cat. No. K4333-100)
- QuickDetect™ Remnant Lipoprotein Cholesterol (RLP-C) (Rat) ELISA Kit (Cat. No. K4335-100)
- QuickDetect™ Total Cholesterol (TC) (Rat) ELISA Kit (Cat. No. K4336-100)
- QuickDetect™ Total Cholesterol (TC) (Mouse) ELISA Kit (Cat. No. K4340-100)

FOR RESEARCH USE ONLY! Not to be used on humans.