

## $\alpha$ -Amylase Polyclonal Antibody

<b>CATALOG #:</b>	3014-30T	30 $\mu$ g (Trial size)
	3014-100	100 $\mu$ g
<b>IMMUNOGEN:</b>	Synthetic peptide surrounding amino acid 492 of human $\alpha$ -Amylase.	
<b>INTERNAL ID#:</b>	BV-H80G	
<b>HOST:</b>	Rabbit	
<b>SPECIES REACTIVITY:</b>	Human, Mouse, Rat	

### FORMULATION:

0.5 mg/ml affinity purified rabbit anti-  $\alpha$ -Amylase polyclonal antibody in phosphate buffered saline (PBS), pH 7.2, containing 30% glycerol, 0.5% BSA, 5 mM EDTA and 0.01% thimerosal.

### STORAGE CONDITIONS:

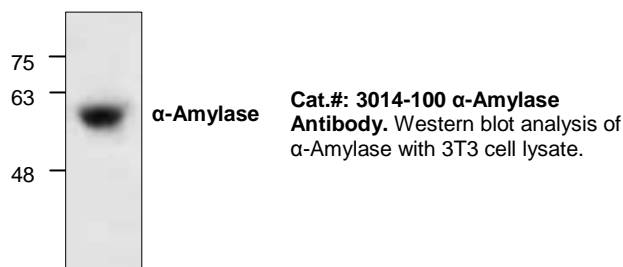
Store at  $-20^{\circ}$  C. For long term storage, aliquot and freeze at  $-70^{\circ}$  C. Avoid repeated freeze/thaw cycles.

### DESCRIPTION:

$\alpha$ -Amylase is an enzyme that is normally produced in the saliva glands and pancreas in humans and in other mammals.  $\alpha$ -Amylase catalyzes the cleavage of 1, 4- $\alpha$ -D-glucosidic bonds of large sugar molecules into oligosaccharides and polysaccharides.

### APPLICATION AND USAGE:

The antibody can be used for Western blot analysis (1-4  $\mu$ g/ml). However, the optimal conditions should be determined individually. Blocking peptide (Cat.#: 3014BP-50) is available separately.



**FOR RESEARCH USE ONLY! Not to be used on humans.**

### RELATED PRODUCTS:

#### Apoptosis Detection Kits & Reagents

- Annexin V Kits & Bulk Reagents
- Caspase Assay Kits & Reagents
- Mitochondrial Apoptosis Kits & Reagents
- Nuclear Apoptosis Kits & Reagents
- Apoptosis Inducers and Set
- Apoptosis siRNA Vectors

#### Cell Fractionation System

- Mitochondria/Cytosol Fractionation Kit
- Nuclear/Cytosol Fractionation Kit
- Membrane Protein Extraction Kit
- Cytosol/Particulate Rapid Separation Kit
- Mammalian Cell Extraction Kit
- FractionPREP Fractionation System

#### Cell Proliferation & Senescence

- Quick Cell Proliferation Assay Kit
- Senescence Detection Kit
- High Throughput Apoptosis/Cell Viability Assay Kits
- LDH-Cytotoxicity Assay Kit
- Bioluminescence Cytotoxicity Assay Kit
- Live/Dead Cell Staining Kit

#### Cell Damage & Repair

- HDAC Fluorometric & Colorimetric Assays & Drug Discovery Kits
- HAT Colorimetric Assay Kit & Reagents
- DNA Damage Quantification Kit
- Glutathione & Nitric Oxide Fluorometric & Colorimetric Assay Kits

#### Signal Transduction

- cAMP & cGMP Assay Kits
- Akt & JNK Activity Assay Kits
- Beta-Secretase Activity Assay Kit

#### Adipocyte & Lipid Transfer

- Recombinant Adiponectin, Survivin, & Leptin
- CETP Activity Assay & Drug Discovery Kits
- PLTP Activity Assay & Drug Discovery Kits
- Total Cholesterol Quantification Kit

#### Molecular Biology & Reporter Assays

- siRNA Vectors
- Cloning Insert Quick Screening Kit
- Mitochondrial & Genomic DNA Isolation Kits
- 5 Minutes DNA Ligation Kit
- 20 Minutes Gel Staining/Destaining Kit
- $\beta$ -Galactosidase Staining Kit & Luciferase Reporter Assay Kit

#### Growth Factors and Cytokines

#### Monoclonal and Polyclonal Antibodies