

Mcl-1 Polyclonal Antibody

CATALOG NO:	3035-30T	30 µg (Trial size)
	3035-100	100 µg
HOST:	Rabbit	
IMMUNOGEN:	Synthetic peptide corresponding to residues surrounding amino acid 131 of human Mcl-1 (ID# BV-438)	
SPECIES REACTIVITY:	Human, Mouse, Rat, Monkey, Rabbit, Porcine, Cat, Dog	

FORMULATION:

0.2 mg/ml affinity purified rabbit anti-Mcl-1 polyclonal antibody in phosphate buffered saline (PBS), pH 7.2, containing 30% glycerol, 0.5% BSA, and 0.01% thimerosal.

STORAGE CONDITIONS:

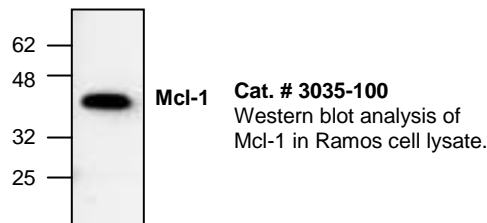
Store at -20° C. For long term storage, aliquot and freeze at -70° C. Avoid repeated freeze/defrost cycles.

BACKGROUND DESCRIPTION:

Mcl-1 (Myeloid cell leukemia-1) is a 37 kDa Bcl-2-related protein with an apparent molecular weight of 43 kDa on SDS-PAGE. Mcl-1 was identified as an early-induction gene that increased in expression during the differentiation of human myeloblastic leukemia cell ML-1, or exposure to different DNA damaging agents. The level of Mcl-1 is decreased in peripheral B lymphocytes undergoing apoptosis following treatment with apoptotic stimuli such as TGF-β1 and forskolin. Expression of Mcl-1 is able to delay apoptosis induced by over-expression of c-myc in CHO 5AHSmyc cells. In hematopoietic FDC-P1 cells, Mcl-1 interacts with another Bcl-2-related protein, Bax, and prolongs cell viability after treatment with different apoptotic reagents.

APPLICATION AND USAGE:

The antibody can be used for Western blotting (0.5-4 µg/ml) and in Immunohistochemistry (5 µg/ml). Based on researcher's feedback, it also works well in Immunoprecipitation (10-20 µg/ml). However, the optimal conditions should be determined individually. Blocking peptide (Cat. # 3035BP-50) is available separately.



FOR RESEARCH USE ONLY! Not to be used on humans.

RELATED PRODUCTS:

Apoptosis Detection Kits & Reagents

- Annexin V Kits & Bulk Reagents
- Caspase Assay Kits & Reagents
- Mitochondrial Apoptosis Kits & Reagents
- Nuclear Apoptosis Kits & Reagents
- Apoptosis Inducers and Set
- Apoptosis siRNA Vectors

Cell Fractionation System

- Mitochondria/Cytosol Fractionation Kit
- Nuclear/Cytosol Fractionation Kit
- Membrane Protein Extraction Kit
- Cytosol/Particulate Rapid Separation Kit
- Mammalian Cell Extraction Kit
- FractionPREP Fractionation System

Cell Proliferation & Senescence

- Quick Cell Proliferation Assay Kit
- Senescence Detection Kit
- High Throughput Apoptosis/Cell Viability Assay Kits
- LDH-Cytotoxicity Assay Kit
- Bioluminescence Cytotoxicity Assay Kit
- Live/Dead Cell Staining Kit

Cell Damage & Repair

- HDAC Fluorometric & Colorimetric Assays & Drug Discovery Kits
- HAT Colorimetric Assay Kit & Reagents
- DNA Damage Quantification Kit
- Glutathione & Nitric Oxide Fluorometric & Colorimetric Assay Kits

Signal Transduction

- cAMP & cGMP Assay Kits
- Akt & JNK Activity Assay Kits
- Beta-Secretase Activity Assay Kit

Adipocyte & Lipid Transfer

- Recombinant Adiponectin, Survivin, & Leptin
- CETP Activity Assay & Drug Discovery Kits
- PLTP Activity Assay & Drug Discovery Kits
- Total Cholesterol Quantification Kit

Molecular Biology & Reporter Assays

- siRNA Vectors
- Cloning Insert Quick Screening Kit
- Mitochondrial & Genomic DNA Isolation Kits
- 5 Minutes DNA Ligation Kit
- 20 Minutes Gel Staining/Destaining Kit
- β-Galactosidase Staining Kit & Luciferase Reporter Assay Kit

Growth Factors and Cytokines

Monoclonal and Polyclonal Antibodies