

SSEA-3 Antibody (Clone MC-631)

CATALOG #:	3065-25	25 µg
LOT #:	_____	
HOST:	Rat	
ISOTYPE:	Rat IgM	
CLONE# :	MC-631	
PURIFICATION:	Affinity purified	
IMMUNOGEN:	4-8 cell stage mouse embryos	
SPECIES REACTIVITY:	Human, Mouse	

ANTIBODY FORMULATION

25 µg in 50 µl of PBS containing 0.05% BSA and 0.05% Sodium Azide.

STORAGE CONDITIONS

Store at -20°C. Avoid repeated freeze/thaw cycles.

DESCRIPTION

This antibody reacts with the Stage-specific embryonic antigen-3 (SSEA-3). The epitope is expressed on the surface of human teratocarcinoma stem cells, embryonic carcinoma (EC) cells, human embryonic germ(EG) cells and human embryonic stem (ES) cells. Expression of SSEA-3 diminishes with differentiation of human EC cells.

APPLICATIONS :

Flow(Cell Surface): 0.5 µg/10⁶ cells

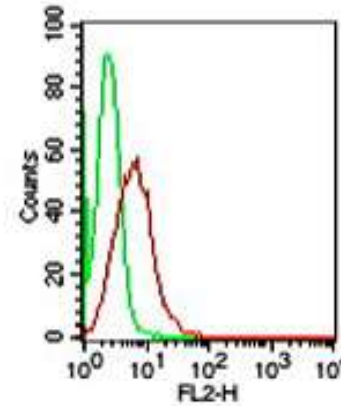
IHC: reported in literature

IP: reported in literature

Western blot analysis: reported in literature

REFERENCES:

1. Kannagi, R., *et al.* (1983). *EMBO J.* 2, 2355-2361.
2. Andrews, P.W., *et al.* (1982). *Int. J. Cancer* 29, 523-531.



Cell surface staining of NCCIT cells using 0.5 µg of 3065-25. Green represents isotype control; red represents anti-SSEA-3 antibody; a PE-conjugated goat anti-rat Ig secondary was used for this test (cells were not fixed for testing).

RELATED PRODUCTS:

- SSEA-4 Monoclonal Antibody (Cat. No. 3074-25)
- SSEA-1 Monoclonal Antibody (Cat. No. 3063-25)
- TRA-1-60 Monoclonal Antibody (Cat. No. 3079-25)
- TRA-1-81 Monoclonal Antibody (Cat. No. 3082-25)

FOR RESEARCH USE ONLY! Not to be used in human subjects!