

SSEA-4 Antibody (Clone MC-813-70)

CATALOG #:	3074-25
AMOUNT:	25 µg
HOST:	Mouse
ISOTYPE:	Mouse IgG3, κ-chain
CLONE# :	MC-813-70
PURIFICATION:	Protein G affinity purified
IMMUNOGEN:	Human embryonal carcinoma cell line 2102Ep
SPECIES REACTIVITY:	Human

ANTIBODY FORMULATION:

25 µg in 50 µl of PBS containing 0.05% BSA and 0.05% Sodium Azide.

STORAGE CONDITIONS

Store at -20°C. Avoid repeated freeze-thaw cycles.

DESCRIPTION:

This antibody reacts with the Stage-specific embryonic antigen-4 (SSEA-4) that is expressed upon the surface of human teratocarcinoma stem cells (EC), human embryonic germ (EG) cells) and human embryonic stem (ES) cells. No immunoreactivity is evident with undifferentiated murine EC, ES and EG cells. Expression of SSEA-4 is down-regulated following differentiation of human EC cells. In contrast, the differentiation of murine EC and ES cells may be accompanied by an increase in SSEA-4 expression.

APPLICATIONS:

Flow(Cell Surface): 0.1 µg/10⁶ cells

IHC (paraffin): reported in literature

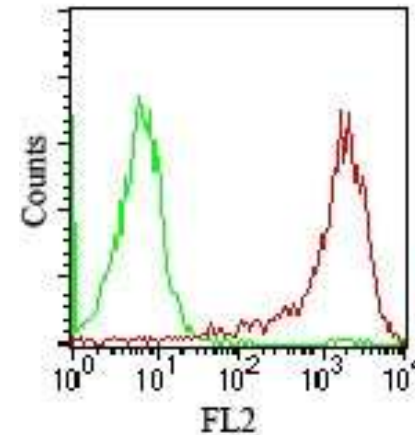
IP: reported in literature

Western blot analysis: reported in literature

REFERENCES:

1. Kannagi, R., et al., EMBO J. 2: 2355 (1983)
2. Gang E.J. et al. Blood. Feb 15;109(4):1743-51 (2007)
3. Henderson, J.K., et al. Stem Cells. 20: 329 (2002)
4. Müller T, et al. Hum Reprod. 2009 Feb 27 (2009)

FOR RESEARCH USE ONLY! Not to be used in humans!



Cell surface flow cytometric analysis of SSEA-4 on 2102Ep cells using 0.1 µg/10⁶ cells of 3074-25 (green histogram represents isotype control; red represents SSEA-4 antibody).

RELATED PRODUCTS:

- SSEA-4 Monoclonal Antibody (Cat. No. 3074-25)
- SSEA-1 Monoclonal Antibody (Cat. No. 3063-25)
- TRA-1-60 Monoclonal Antibody (Cat. No. 3079-25)
- TRA-1-81 Monoclonal Antibody (Cat. No. 3082-25)