

## Glucokinase (GCK) polyclonal antibody

<b>CATALOG #:</b>	3154-100
<b>AMOUNT:</b>	100 µg
<b>HOST(ISOTYPE):</b>	Rabbit (Ig)
<b>IMMUNOGEN:</b>	KLH conjugated synthetic peptide between 411 and 441 amino acids from the C-terminal region of human GCK.
<b>SPECIES REACTIVITY:</b>	human
<b>CONCENTRATION:</b>	0.25 mg/ml
<b>MOLECULAR WEIGHT:</b>	52.191 kDa

### FORMULATION:

Purified polyclonal antibody supplied in PBS with 0.09% (W/V) sodium azide. This antibody is purified through a protein G column, eluted with high and low pH buffers and neutralized immediately, followed by dialysis against PBS.

### STORAGE CONDITIONS:

Maintain refrigerated at 2-8°C for up to 6 months or -20°C for long term storage.

### BACKGROUND DESCRIPTION:

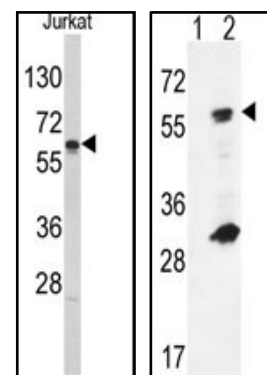
Hexokinases phosphorylate glucose to produce glucose-6-phosphate, thus committing glucose to the glycolytic pathway. Alternative splicing of the gene for GCK results in three tissue-specific forms of glucokinase, one found in pancreatic islet beta cells and two found in liver. The protein localizes to the outer membrane of mitochondria. In contrast to other forms of hexokinase, this enzyme is not inhibited by its product glucose-6-phosphate but remains active while glucose is abundant. Mutations in the gene have been associated with non-insulin dependent diabetes mellitus (NIDDM), also called maturity onset diabetes of the young, type 2 (MODY2); mutations have also been associated with persistent hyperinsulinemic hypoglycemia of infancy (PHHI).

### OTHER NAMES:

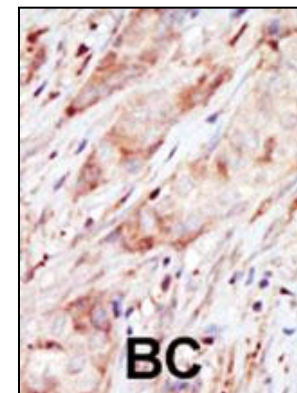
Hexokinase D; Hexokinase type IV; HK IV; HK4; Glucokinase.

### APPLICATION (suggested concentration):

The antibody can be used for ELISA (1:1000), Western blotting (1:100-500), Immunohistochemistry (1:50-100).



Western blot analysis of pAb (Cat. #3154-100) to detect GCK in Jurkat cell lysate (Left) and transfected 293 cell lysates (Right).



Formalin-fixed and paraffin-embedded human cancer tissue reacted with the primary antibody, which was peroxidase-conjugated to the secondary antibody, followed by AEC staining. BC = breast carcinoma.

### RELATED PRODUCTS:

- 7776-10** Glucokinase, human liver, recombinant
- 7777-10** Glucokinase, human pancreatic, recombinant
- 3153-100** GCK (Glucokinase) Antibody