

SOX4, Rabbit pAb

CATALOG #:	3168-100
AMOUNT:	100 µg
HOST (ISOTYPE):	Rabbit (Ig)
IMMUNOGEN:	KLH conjugated synthetic peptide selected from the N-terminal region of human SOX4.
SPECIES REACTIVITY:	Human

FORMULATION:

Purified polyclonal antibody supplied in PBS pH 7.2, 0.09% sodium azide. This antibody is prepared by Saturated Ammonium Sulfate (SAS) precipitation followed by dialysis against PBS.

STORAGE CONDITIONS:

Store at -20 °C. Avoid repeated freeze-thaw cycles.

BACKGROUND DESCRIPTION:

SOX4 is a member of the SOX (SRY-related HMG-box) family of transcription factors involved in the regulation of embryonic development and in the determination of the cell fate. The protein may act as a transcriptional regulator after forming a protein complex with other proteins, such as syndecan binding protein (syntenin). The protein may function in the apoptosis pathway leading to cell death as well as to tumorigenesis and may mediate downstream effects of parathyroid hormone (PTH) and PTH-related protein (PTHrP) in bone development. The solution structure has been resolved for the HMG-box of a similar mouse protein.

OTHER NAMES:

SRY-Box Transcription Factor 4; Transcription factor SOX-4; SOX-4

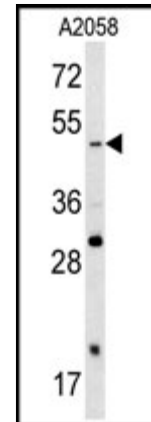
APPLICATION (suggested concentration):

Western Blotting (WB): 1:1000 dilution

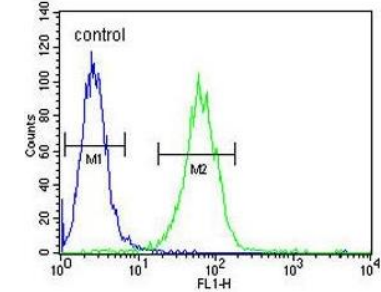
Immunohistochemistry (IHC): 1:50 to 1:100 dilution

Immunofluorescence (IF) and Flow Cytometry (FC): 1:10 to 1:50 dilution

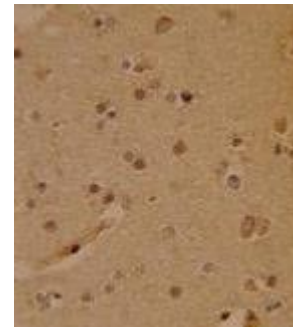
FOR RESEARCH USE ONLY! Not to be used on humans.



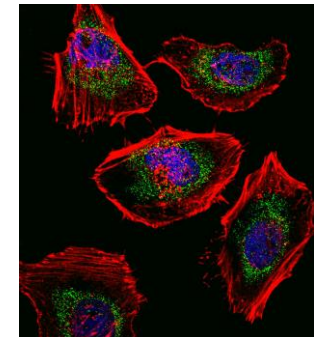
Western blot analysis of A2058 cell lysate using SOX4 antibody



Flow cytometric analysis of A2058 cells using control antibody (blue) and SOX4 antibody (green)



IHC analysis of human brain tissue using SOX4 antibody



Immunofluorescence image of HeLa cells stained with SOX4 antibody (green), actin antibody (red), and DAPI to visualize nuclei (blue)

RELATED PRODUCTS:

Anti-STAT5B Antibody (Cat. No. A1753)

recMAb™ Anti-SOX11 Antibody (Cat. No. A2194)

Phospho c-Jun (Ser63) Antibody (Cat. No. A1963)

recMAb™ Anti-FOXA1 Antibody (Cat. No. A2188)

Nanog Antibody (Cat. No. 3165)