

# Cathepsin L Polyclonal Antibody

<b>CATALOG NO:</b>	3192-30T      30 µg (Trial size) 3192-100      100 µg
<b>AMOUNT:</b>	100 µg
<b>HOST:</b>	Rabbit
<b>IMMUNOGEN:</b>	Synthetic peptide surrounding amino acid 223 of human Cathepsin L (ID# BV-399).
<b>SPECIES REACTIVITY:</b>	Human, Mouse, Rat

**FORMULATION:**

0.2 mg/ml affinity purified rabbit anti-cathepsin L polyclonal antibody in phosphate buffered saline (PBS), pH 7.2, containing 30% glycerol, 0.1% BSA, 0.01% thimerosal.

**BACKGROUND:**

Cathepsin L is a normal lysosomal cysteine endoproteases that is expressed in all cells. The latent 39 kDa pro-Cathepsin L must be processed by cleavage of the 96 amino acid pro-peptide, to generate the active two-chain form made up of 21 and 5 kDa subunits. Mature Cathepsin L is normally localized in the lysosomes where it plays a major role in intracellular protein catabolism. The fact that Cathepsin L is also capable of degrading extracellular matrix proteins suggests that it may play a role in invasion and metastasis and could be a useful prognostic indicator for cancer.

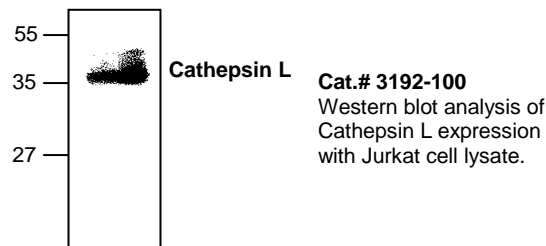
**SPECIFICITY:** Detects both the proenzyme and the mature form of cathepsin L.

**APPLICATION AND USAGE:**

The antibody can be used for Western blotting (0.5-4 µg/ml) and Immunohistochemistry (5 µg/ml).. However, the optimal conditions should be determined individually. Jurkat cell lysate (Cat.# 2401-100) can be used as a positive control. Blocking peptide (Cat.# 3192BP-50) is also available separately.

**STORAGE CONDITIONS:**

Store at -20°C. For long-term storage, aliquot and freeze at -70°C. Avoid repeated freeze/thaw cycles.



FOR RESEARCH USE ONLY. Not to be used on humans

**RELATED PRODUCTS:**

- Cathepsin L, human recombinant (**Cat. No. 1135-5, -100, -1000**)
- Human CellExp™ Cathepsin B, human recombinant (**Cat. No. 7408-10**)
- Human CellExp™ Cathepsin D, human recombinant (**Cat. No. 7409-10**)
- Human CellExp™ Cathepsin S, human recombinant (**Cat. No. 7277-10, -50, -1000**)
- Human CellExp™ Cathepsin L1, human recombinant (**Cat. No. 7410-10**)
- Cathepsin K, Active, human recombinant (**Cat. No. 7600-5, -50**)
- Cathepsin K, Active, mouse recombinant (**Cat. No. 7597-5, -50**)
- Cathepsin K, Active, rat recombinant (**Cat. No. 7598-5, -50**)
- Cathepsin B (active, human) (**Cat. No. 1021-5**)
- Cathepsin D (active, human) (**Cat. No. 1022-5**)
- Cathepsin H (active, human) (**Cat. No. 1023-5**)
- Procathepsin K, human recombinant (**Cat. No. 1026-10, -50, -1000**)
- Procathepsin K, mouse recombinant (**Cat. No. 1027-10, -50, -1000**)
- Procathepsin K, rat recombinant (**Cat. No. 1029-10, -50, -1000**)