

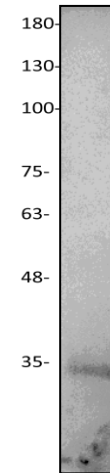
SETD3 Antibody

CATALOG NO:	3197-30T 30 µg (Trial size) 3197-200 200 µg
ALTERNATE NAMES:	SET domain containing 3
HOST:	Rabbit
ISOTYPE:	IgG
IMMUNOGEN:	Synthetic peptide at near N-terminal (BV-L45)
PURIFICATION:	Affinity purified rabbit IgG
FORM:	Liquid
FORMULATION:	0.5 mg/ml of antibody in PBS, 0.01 % BSA, 0.01 % thimerosal, and 50 % glycerol, pH 7.2
SPECIES REACTIVITY:	Human, Mouse and Rat.
STORAGE CONDITIONS:	Store for 1 year at -20°C from date of shipment. Avoid repeated freeze/thaw cycles.

DESCRIPTION: Histone-lysine N- methyltransferase SETD3 has a function as methylation of Lys36 of histone H3 which represents a specific tag for epigenetic transcriptional activation. It is highly expressed in muscular tissues. SETD3 contains 1 SET domain. The function of the SETD3 protein remains unknown. There are 3 isoforms produced by alternative splicing.

APPLICATION: Western blot: 1:200

Note: This information is only intended as a guide. The optimal dilutions must be determined by the user.



Western blot of Rat kidney lysate with SETD3 antibody

RELATED PRODUCTS:

- SETD3 blocking peptide (**Cat. No. 3197BP-50**)
- Methyl Lysine (Biotin) Antibody (**Cat. No. 6124-50**)
- EZH1 Antibody (**Cat. No. 6123-50**)
- EZH2 Antibody (**Cat. No. 3242-100**)
- 3-Deazaneplanocin (**Cat. No. 2060-250, -1000**)
- GSK343 (**Cat. No. 2281-1, -5**)
- GSK126 (**Cat. No. 2282-1, -5**)
- BIX 01294 (**Cat. No. 1678-5, -25**)
- Histone methyltransferase (SUV39H1) Antibody (**Cat. No. 3942-100**)

FOR RESEARCH USE ONLY! Not to be used on humans.