

## Nestin Polyclonal Antibody

<b>CATALOG #:</b>	3208-100
<b>AMOUNT:</b>	100 µg
<b>HOST:</b>	Rabbit
<b>IMMUNOGEN:</b>	Nestin recombinant protein
<b>SPECIES REACTIVITY:</b>	Human
<b>MOLECULAR WEIGHT:</b>	177.439 kDa

### FORMULATION:

100 µg (0.25 mg/ml) affinity purified rabbit anti-Nestin polyclonal antibody in PBS with 0.09% (W/V) sodium azide. This antibody is purified through a Protein A column, followed by peptide affinity purification.

### STORAGE CONDITIONS:

Store at 2-8°C. For long-term storage, aliquot and freeze at -20°C. Avoid repeated freeze/thaw cycles.

### DESCRIPTION:

Nestin may play a role in the trafficking and distribution of IF proteins and potentially other cellular factors to daughter cells during progenitor cell division (By similarity).

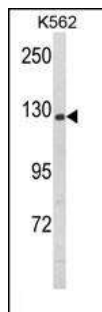
### APPLICATION AND SPECIFICITY:

The antibody can be used for Western blot analysis (1:100~500), ELISA (~1:1,000), and Flow cytometry (1:10~50).

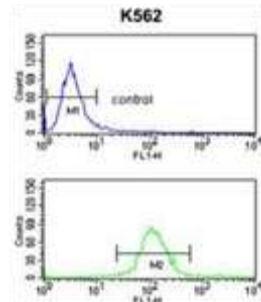
**FOR RESEARCH USE ONLY! Not to be used on humans.**

### RELATED PRODUCTS:

- **3166-100:** Nestin Antibody
- **3167-100 :** Nestin Antibody



Western blot analysis of Nestin Antibody (Cat.#3208-100) in K562 cell line lysates (35µg/lane). NEST (arrow) was detected using the purified antibody.



NEST Antibody flow cytometry analysis of K562 cells (bottom histogram) compared to a negative control cell (top histogram). FITC-conjugated goat-anti-rabbit secondary antibodies were used for the analysis. (35µg/lane). NEST (arrow) was detected using the purified antibody.