

## TACE Polyclonal Antibody

**CATALOG NO:** 3222-100

**AMOUNT:** 100 µg

**HOST:** Rabbit

**IMMUNOGEN:**

KLH-conjugated synthetic peptide encompassing a sequence within the center region of human TACE

**FORMULATION:**

In 0.42% Potassium phosphate, 0.87% Sodium chloride, pH 7.3, 30% glycerol and 0.01% sodium azide.

**SPECIES REACTIVITY:** Human, Mouse, Rat

**STORAGE CONDITIONS:**

For long term storage store at -20°C in small aliquots to prevent freeze-thaw cycles

**BACKGROUND:**

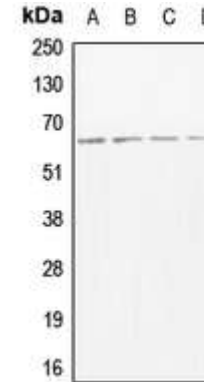
Tumor necrosis factor- $\alpha$  (TNF- $\alpha$ ) is a proinflammatory cytokine and contributes to a variety of inflammatory disease responses and programmed cell death. TNF- $\alpha$  is synthesized as a 26K type II membrane-bound precursor that is cleaved by a convertase to generate secreted 17K mature TNF- $\alpha$ . TNF- $\alpha$  converting enzyme (TACE) protein was recently purified and the human and mouse TACE cDNAs were cloned by several groups separately. TACE is a membrane-bound metalloprotease-disintegrin in the family of mammalian ADAM (for a disintegrin and metalloprotease). TACE also processes other cell surface proteins, including TNF receptor, TGF- $\alpha$ , L-selectin adhesion molecule, and alpha-cleavage of amyloid protein precursor (APP). TACE mRNA is expressed in a variety of human and murine tissues.

**APPLICATION AND USAGE:** WB; 1:500 – 1:1000

**Note:** This information is only intended as a guide. The optimal dilutions must be determined by the user.

**SPECIFICITY:**

Recognizes endogenous levels of TACE protein



**Western blot analysis of TACE expression in MCF7 (A), mouse heart (B), rat muscle (C), rat heart (D) whole cell lysates.**

**RELATED PRODUCTS:**

- TACE (human) ELISA Kit (**Cat. No. K4754**)
- TACE Antibody (**Cat. No. 3222R**)
- TACE Inhibitor Screening Assay Kit (Fluorometric) (**Cat. No. K4754**)
- Human Recombinant TACE (**Cat. No. 7607**)

**FOR RESEARCH USE ONLY! Not to be used in humans.**