

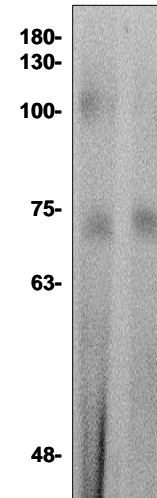
# Beta-Galactosidase Antibody

<b>ALTERNATE NAMES:</b>	GLB1, ELNR1
<b>CATALOG NO:</b>	3231-30T 30 µg (Trial size) 3231-100 100 µg
<b>HOST:</b>	Rabbit
<b>ISOTYPE:</b>	IgG
<b>IMMUNOGEN:</b>	Beta-Galactosidase (Escherichia coli) (BV-H71)
<b>PURIFICATION:</b>	Affinity purified rabbit IgG
<b>FORM:</b>	Liquid
<b>FORMULATION:</b>	0.5 mg/ml of antibody in phosphate buffered saline (PBS), pH 7.2, containing 30% glycerol, 0.5% BSA, 5 mM EDTA and 0.03% proclin.
<b>SPECIES REACTIVITY:</b>	Human, Mouse and Rat.
<b>STORAGE CONDITIONS:</b>	Store for 1 year at -20°C from date of shipment. Avoid repeated freeze/thaw cycles.

**DESCRIPTION:** The GLB1 gene encodes beta-galactosidase-1 (EC 3.2.1.23), a lysosomal hydrolase that cleaves the terminal beta-galactose from ganglioside substrates and other glycoconjugates (Yoshida et al., 1991 [PubMed 1907800]). Beta-galactosidase also occurs in a complex with neuraminidase (NEU1; MIM 608272) and protective protein/cathepsin A (PPCA; MIM 256540), which is a component of certain cell surface receptors. This protein has no beta-galactosidase catalytic activity, but plays functional roles in the formation of extracellular elastic fibers (elastogenesis) and in the development of connective tissue. Seems to be identical to the elastin-binding protein (EBP), a major component of the non-integrin cell surface receptor expressed on fibroblasts, smooth muscle cells, chondroblasts, leukocytes, and certain cancer cell types. In elastin producing cells, associates with tropoelastin intracellularly and functions as a recycling molecular chaperone which facilitates the secretions of tropoelastin and its assembly into elastic fibers. Cleaves beta-linked terminal galactosyl residues from gangliosides, glycoproteins, and glycosaminoglycans.

**APPLICATION:** Western blot: 1:200

**Note:** This information is only intended as a guide. The optimal dilutions must be determined by the user.



Western blot with beta-Galactosidase antibody.  
Lane 1: Jurkat cell lysate.  
Lane 2: Jurkat cell lysate (induced).

#### RELATED PRODUCTS:

- Beta-Galactosidase Staining Kit (Cat. No. K802-250)

**FOR RESEARCH USE ONLY! Not to be used on humans.**