

## Lamin A/C Polyclonal Antibody

<b>CATALOG #:</b>	3267-100
<b>AMOUNT:</b>	100 µg
<b>LOT #:</b>	_____
<b>HOST:</b>	Rabbit
<b>IMMUNOGEN:</b>	Synthetic peptide surrounding amino acid 220 of human Lamin A (ID# BV-132)
<b>SPECIES REACTIVITY:</b>	Human, Mouse, Rat

### FORMULATION:

100 µg (0.2 mg/ml) affinity purified rabbit anti-Lamin A polyclonal antibody in phosphate buffered saline (PBS), pH 7.2, containing 30% glycerol, 0.5% BSA, 0.01% thimerosal.

### STORAGE CONDITIONS:

Store at -20°C. For long term storage, aliquot and freeze at -70°C. Avoid repeated freeze/thaw cycles.

### BACKGROUND DESCRIPTION:

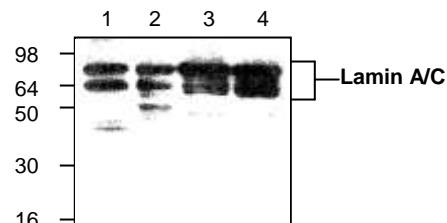
Lamins are nuclear membrane structural components that are important in maintaining normal cell functions such as cell cycle control, DNA replication and chromatin organization. Lamin A is specifically cleaved by caspase-6 and therefore serves as a marker for caspase-6 activation. During apoptosis the 70 kDa lamin A is cleaved to a large (40-45 kDa) and small (23 kDa) fragment. The cleavage of lamins results in nuclear disorganization and cell death.

### SPECIFICITY:

The antibody mainly detects full length (~70 kDa) and in a much lesser extent the cleaved fragments (45 kDa and 23 kDa) of Lamin A/C. Blocking Peptide (Cat.# 3267BP-50) is available separately.

### APPLICATIONS AND USAGE:

The antibody can be used in Western blot analysis (0.5-4 µg/ml) and immunohistochemistry (15-20 µg/ml). However, the optimal conditions should be determined individually.



**Cat.# 3267-100**

Western blot analysis of Lamin A/C in lysates from Jurkat cells (Lane 1 and 2), mouse small intestine (Lane 3) and rat kidney (Lane 4).

**FOR RESEARCH USE ONLY! Not to be used on humans.**

### RELATED PRODUCTS:

#### Apoptosis Detection Kits & Reagents

- Annexin V Kits & Bulk Reagents
- Caspase Assay Kits & Reagents
- Mitochondrial Apoptosis Kits & Reagents
- Nuclear Apoptosis Kits & Reagents
- Apoptosis Inducers and Set
- Apoptosis siRNA Vectors

#### Cell Fractionation System

- Mitochondria/Cytosol Fractionation Kit
- Nuclear/Cytosol Fractionation Kit
- Membrane Protein Extraction Kit
- Cytosol/Particulate Rapid Separation Kit
- Mammalian Cell Extraction Kit
- FractionPREP Fractionation System

#### Cell Proliferation & Senescence

- Quick Cell Proliferation Assay Kit
- Senescence Detection Kit
- High Throughput Apoptosis/Cell Viability Assay Kits
- LDH-Cytotoxicity Assay Kit
- Bioluminescence Cytotoxicity Assay Kit
- Live/Dead Cell Staining Kit

#### Cell Damage & Repair

- HDAC Fluorometric & Colorimetric Assays & Drug Discovery Kits
- HAT Colorimetric Assay Kit & Reagents
- DNA Damage Quantification Kit
- Glutathione & Nitric Oxide Fluorometric & Colorimetric Assay Kits

#### Signal Transduction

- cAMP & cGMP Assay Kits
- Akt & JNK Activity Assay Kits
- Beta-Secretase Activity Assay Kit

#### Adipocyte & Lipid Transfer

- Recombinant Adiponectin, Survivin, & Leptin
- CETP Activity Assay & Drug Discovery Kits
- PLTP Activity Assay & Drug Discovery Kits
- Total Cholesterol Quantification Kit

#### Molecular Biology & Reporter Assays

- siRNA Vectors
- Cloning Insert Quick Screening Kit
- Mitochondrial & Genomic DNA Isolation Kits
- 5 Minutes DNA Ligation Kit
- 20 Minutes Gel Staining/Destaining Kit
- β-Galactosidase Staining Kit & Luciferase Reporter Assay Kit

#### Growth Factors and Cytokines

#### Monoclonal and Polyclonal Antibodies