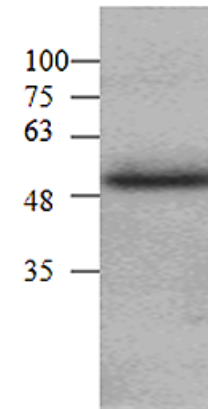


GSAP Polyclonal Antibody

ALTERNATE NAMES:	PION, Gamma secretase activating protein, Protein pigeon homolog.
CATALOG #:	3308-30T 30 µg (Trial size) 3308-200 200 µg
IMMUNOGEN:	Synthetic peptide close to C-terminal of GSAP
INTERNAL ID#:	BV-L23
HOST:	Rabbit
ISOTYPE:	IgG
SPECIES REACTIVITY:	Human, Mouse, Rat
FORM:	Liquid
FORMULATION:	0.5 mg/ml antibody in PBS pH 7.2, containing 30% glycerol, 0.5% BSA, 5mM EDTA and 0.01% thimerosal.
STORAGE CONDITIONS:	Store at -20°C. For long-term storage, aliquot and freeze at -70°C. Avoid repeated freeze/thaw cycles.
DESCRIPTION:	GSAP, gamma-secretase activating protein interacts with gamma secretase which chops up the amyloid precursor protein to senile plaques in Alzheimer's disease. GSAP was found to increase the production amyloid peptide. Immunohistochemistry to identify GSAP in brain can demonstrate its abundance in certain regions of damage, and is usually morphologically changed throughout the progression of Alzheimer's disease. GSAP can be used as a qualitative biomarker of Alzheimer's disease progression, and is regularly considered one of the best targets of therapies to diminish the effects of Alzheimer's disease in affected individuals.
APPLICATION AND USAGE:	The antibody can be used in Western Blot analysis (1-4 µg/ml). However, the optimal concentrations should be determined individually. Blocking peptide (Cat.# 3308BP-50) is available separately.



Cat # 3308-100 GSAP Antibody
Western blot analysis with mouse 3T3 cells

RELATED PRODUCTS:

- Anti-Human Amyloid Beta 18-29 Antibody (Cat. No. 5007-100)
- ABAD/HADH2 Antibody (Cat. No. 3246-100)
- APP Antibody (Cat. No. 6001-100)
- ERAB/HCD2 Antibody (Cat. No. 3255-100)
- SAA1 monkey, recombinant (Cat. No. 4332-10, 1000)

FOR RESEARCH USE ONLY! Not to be used in humans.

Western blot analysis of GASP using