

# Cathepsin S Polyclonal Antibody

**CATALOG NO:** 3366R-30T 30 µg (Trial size)  
3366R-100 100 µg

**HOST:** Rabbit

**IMMUNOGEN:** Synthetic peptide surrounding to amino acid 323 of human Cathepsin S (ID# BV-263)

**SPECIES REACTIVITY:** Human

**FORMULATION:**

0.5 mg/ml affinity purified rabbit anti-cathepsin S polyclonal antibody in phosphate buffered saline (PBS), pH 7.2, containing 30% glycerol, 0.5% BSA, 0.01% thimerosal.

**STORAGE CONDITIONS:**

Store at -20°C. For long-term storage, aliquot and freeze at -70°C. Avoid repeated freeze/thaw cycles.

**BACKGROUND:**

Cathepsin family of proteases contains several diverse classes of enzymes. The cysteine protease class comprises cathepsin B, H, K, L, O, and S. The aspartyl protease class contains cathepsin D and E. Cathepsin G belongs to the serine protease class. Cathepsins are involved in various cellular events such as peptide biosynthesis, protein degradation, and apoptosis. Cathepsin S has been shown to be present in aveloar macrophages.

**SPECIFICITY:**

Detects 37 kDa human cathepsin S. Cross-reactivity to other species has not been determined.

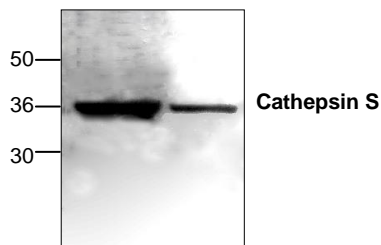
**APPLICATION AND USAGE:**

The antibody can be used for Western blotting (0.5-4 µg/ml) and Immunohistochemistry (5 µg/ml). However, the optimal conditions should be determined individually. Blocking peptide is available separately (3366RBP-50).

**RELATED PRODUCTS:**

- Cathepsin L, human recombinant (**Cat. No. 1135-5, -100, -1000**)
- Human CellExp™ Cathepsin B, human recombinant (**Cat. No. 7408-10**)
- Human CellExp™ Cathepsin D, human recombinant (**Cat. No. 7409-10**)
- Human CellExp™ Cathepsin S, human recombinant (**Cat. No. 7277-10, -50, -1000**)
- Human CellExp™ Cathepsin L1, human recombinant (**Cat. No. 7410-10**)
- Cathepsin K, Active, human recombinant (**Cat. No. 7600-5, -50**)
- Cathepsin K, Active, mouse recombinant (**Cat. No. 7597-5, -50**)
- Cathepsin K, Active, rat recombinant (**Cat. No. 7598-5, -50**)
- Cathepsin B (active, human) (**Cat. No. 1021-5**)
- Cathepsin D (active, human) (**Cat. No. 1022-5**)
- Cathepsin H (active, human) (**Cat. No. 1023-5**)
- Procathepsin K, human recombinant (**Cat. No. 1026-10, -50, -1000**)
- Procathepsin K, mouse recombinant (**Cat. No. 1027-10, -50, -1000**)
- Procathepsin K, rat recombinant (**Cat. No. 1029-10, -50, -1000**)

**FOR RESEARCH USE ONLY! Not to be used on humans.**



**Cathepsin S**  
Cat.# 3366R-100  
Western blots analysis of Cathepsin S expression with Jurkat cell lysates.