

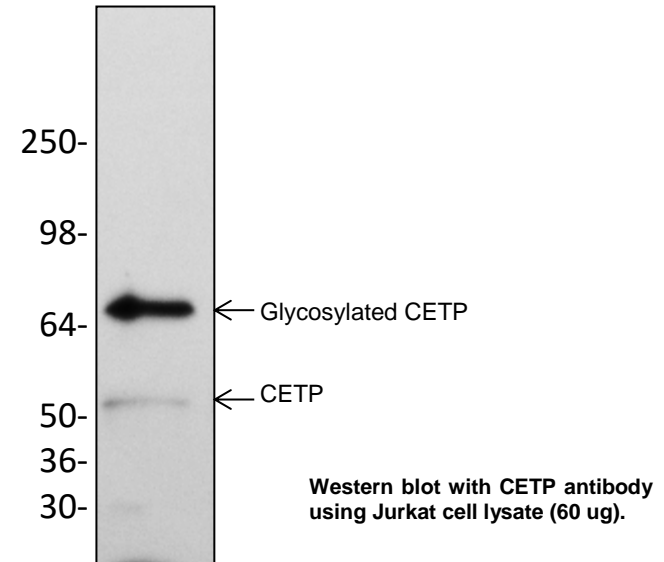
CETP Polyclonal Antibody

CATALOG NO:	3413-30T 30 µg (Trial size) 3413-100 100 µg
CONCENTRATION:	0.5 mg/ml
IMMUNOGEN:	Synthetic peptide corresponding to the region around amino acid 153 of human CETP
INTERNAL ID:	BV-213
HOST:	Rabbit
SPECIES REACTIVITY:	Human, Rat, Rabbit
PURIFICATION:	Affinity purified rabbit IgG
FORMULATION:	100 µg (0.5 mg/ml) of antibody in PBS, pH 7.2, 30% glycerol, 0.5% BSA, 0.5 mM EDTA and 0.03% proclin
STORAGE CONDITIONS:	Store at -20° C. For long term storage, aliquot and freeze at -70° C. Avoid repeated freeze/thaw cycles.

DESCRIPTION: It has been proposed that high density lipoproteins (HDLs) function jointly with lecithin:cholesterol acyltransferase and CETP to facilitate cholesterol transport from tissues to the liver. CETP is responsible for neutral lipid transfer activity in plasma in numerous species. Since CETP is able to accelerate specifically the exchange of lipid components between pro- and anti-atherogenic lipoprotein fractions, it may be a key determinant of the global atherogenicity of the plasma lipoprotein profile and arises as a possible target in atherosclerosis prevention. CETP has an important role in reverse cholesterol transport and shaping and affecting the composition of plasma lipoproteins. In general elevated levels of CETP have been associated with increased risk of coronary heart disease.

APPLICATION: Western blotting: 0.5-4 µg/ml

Note: This information is only intended as a guide. The optimal dilutions must be determined by the user.



RELATED PRODUCTS:

- CETP beta Blocking Peptide (3413BP-50)
- Active Recombinant Human CETP (7606-20,50,100)
- CETP Activity Fluorometric Assay Kit II (K595-100)
- CETP Inhibitor Screening Kit (Fluorometric) II (K594-100)
- PLTP Activity Fluorometric Assay Kit II (K593-100)
- PLTP Inhibitor Screening Kit (fluorometric) II (K605-100)

FOR RESEARCH USE ONLY! Not to be used on humans.