

Anti-Stat5 Polyclonal Antibody

CATALOG NO: 3472-30T 30 µg (Trial size)
3472-100 100 µg

HOST: Rabbit

IMMUNOGEN: Synthetic peptide surrounding amino acid 777 of human Stat5 (Internal ID# BV-576).

SPECIES REACTIVITY: Human, Mouse, Rat, Bovine, Pig

FORMULATION:

0.5 mg/ml affinity purified rabbit polyclonal antibody in phosphate-buffered saline (PBS).

STORAGE CONDITIONS:

Store at -20°C. For long term storage, aliquot and freeze at -70°C. Avoid repeated freeze/thaw cycles.

BACKGROUND:

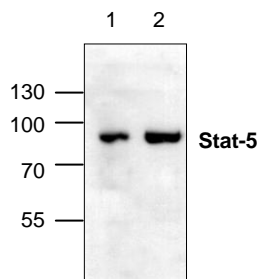
Membrane receptor signaling by various ligands induces activation of Jak kinases which then leads to tyrosine phosphorylation of the various Stat transcription factors. Stat1 and Stat2 are induced by IFN- α and form a heterodimer which is part of the ISGF3 transcription factor complex. Although early reports indicate Stat3 activation by EGF and IL-6, it has been shown that Stat3 β appears to be activated by both while Stat3 α is activated by EGF, but not by IL-6. Highest expression of Stat4 is seen in testis and myeloid cells. IL-12 has been identified as an activator of Stat4. Stat5 is activated by prolactin and by IL-3. Stat6 is involved in IL-4 activated signaling pathways.

SPECIFICITY:

The antibody recognizes ~95 kDa Stat5 of human, mouse and rat origins. Reactivity to other species has not been tested.

APPLICATION:

The antibody can be used in Western blotting (2-10 µg/ml) and Immunohistochemistry (5 µg/ml). Per researchers feed back, it also works in immunoprecipitation (20 µg/ml) and immunohistochemistry (20 µg/ml). However, the optimal concentrations should be determined individually.



Cat. #: 3472-100
Western blot analysis of Stat-5 expression in 3T3 cell lysate (Lane 1) and rat kidney tissue lysate (Lane 2).

RELATED PRODUCTS:

- Stat1 Antibody (**Cat. No. 3133R-100**)
- Stat1 Blocking Peptide (**Cat. No. 3133RBP-50**)
- Stat2 Antibody (**Cat. No. 3468-100**)
- Stat2 Antibody (**Cat. No. 3468R-100**)
- Stat2 Blocking Peptide (**Cat. No. 3468RBP-50**)
- Stat3 Antibody (**Cat. No. 3470-100**)
- Stat3 Activation Inhibitor, SPI (**Cat. No. 1813-2**)
- Stat3 Antibody (**Cat. No. 3470R-100**)
- Stat3 Blocking Peptide (**Cat. No. 3470RBP-50**)
- Stat3 Inhibitor I, S3I-201 (**Cat. No. 1775-5,-25**)
- Stat3 Peptide Inhibitor, Cell-Permeable (**Cat. No.1778-1,-5**)
- Stat4 Antibody (**Cat. No. 3471-100**)
- Stat4 Antibody (**Cat. No. 3471R-100**)
- Stat4 Blocking Peptide (**Cat. No.3471RBP-50**)
- Stat5 Blocking Peptide (**Cat. No. 3472BP-50**)
- Stat6 Antibody (**Cat. No. 3473R-100**)
- Stat6 Blocking Peptide (**Cat. No.3473RBP-50**)

FOR RESEARCH USE ONLY! Not to be used on humans.