

## Fis1 Polyclonal Antibody

<b>CATALOG NO:</b>	3491R-30T	30 µg (Trial size)
	3491R-100	100 µg
<b>HOST:</b>	Rabbit	
<b>IMMUNOGEN:</b>	Synthetic peptide surrounding amino acid 143 of human Fis1 (ID# BV-429R)	
<b>SPECIES REACTIVITY:</b>	Human, Mouse, Rat	

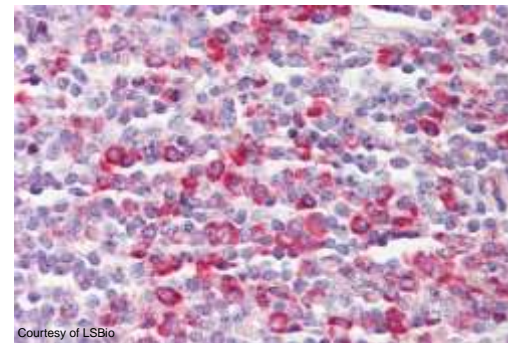
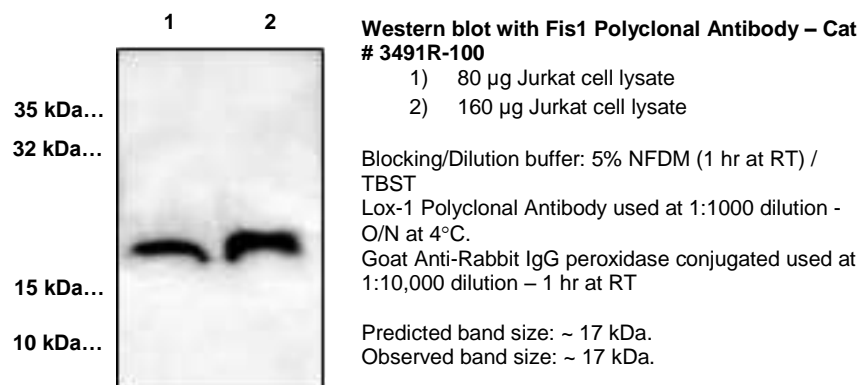
**FORMULATION:** 0.5 mg/ml affinity purified rabbit polyclonal antibody in phosphate buffered saline (PBS), pH 7.2, containing 30% glycerol, 0.5% BSA, 5 mM EDTA and 0.03% proclin.

**STORAGE CONDITIONS:** Store at -20°C. For long term storage, aliquot and freeze at -70°C. Avoid repeated freeze/thaw cycles.

**BACKGROUND:** hFis1 is a novel molecule that was discovered as part of the mammalian fission machinery. Fis 1 has been suggested to play a role in regulation of the fission processes that might be involved in apoptotic mechanisms.

**SPECIFICITY:** The antibody recognizes Fis1 of human, mouse, and rat origins.

**APPLICATION:** The antibody has been used in Western blotting (1-4 µg/ml). Per research's feedback, the antibody can also be used in immunofluorescence. However, the optimal concentrations should be determined individually. Other applications have not been tested. Blocking peptide (Cat.# 3491BP-50) is available separately.



**IHC staining of human tonsil tissue with Fis1 Polyclonal antibody:** Immunohistochemistry of formalin fixed, paraffin-embedded tissue after heat-induced antigen retrieval. 1:100 dilution of antibody used for staining. After incubation with the primary antibody, slides were incubated with biotinylated secondary antibody, followed by alkaline phosphatase-streptavidin and chromogen.

### RELATED PRODUCTS:

- Fis1 Antibody (Cat # 3491-100)
- Fis1 Blocking Peptide (Cat # 3491BP-50)
- 4-1BBL Antibody (Cat # 5369-100)
- 4-1BBR Antibody (Cat # 5370-100)
- ACAA1 Antibody (Cat # 3536-100)

**FOR RESEARCH USE ONLY! Not to be used on humans.**