

## HtrA2/Omi Polyclonal Antibody

**CATALOG NO:** 3497-100  
**AMOUNT:** 100 µg  
**HOST:** Rabbit  
**IMMUNOGEN:** Recombinant human HtrA2/Omi

**PURIFICATION:**  
The antibody was purified by immunogen affinity chromatography.

**FORMULATION:**  
In 0.42% Potassium phosphate; 0.87% Sodium chloride; pH 7.3; 30% glycerol; and 0.01% sodium azide

**SPECIES REACTIVITY:** Human, Mouse, Rat

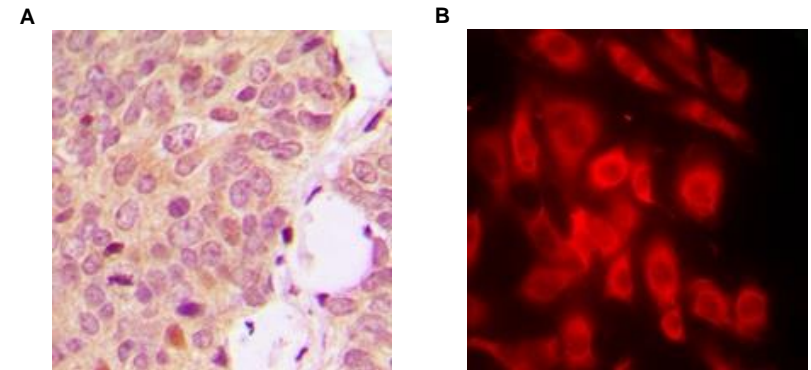
**STORAGE CONDITIONS:**  
Store at -20°C. For long term storage, aliquot and freeze at -70°C. Avoid repeated freeze/thaw cycles.

**BACKGROUND:**  
Serine protease that shows proteolytic activity against a non-specific substrate beta-casein. Promotes or induces cell death either by direct binding to and inhibition of BIRC proteins (also called inhibitor of apoptosis proteins, IAPs), leading to an increase in caspase activity, or by a BIRC inhibition-independent, caspase-independent and serine protease activity-dependent mechanism. Cleaves THAP5 and promotes its degradation during apoptosis. Isoform 2 seems to be proteolytically inactive.

**SPECIFICITY:**  
The antibody recognizes the full length and the mitochondria-processed HtrA2/Omi.

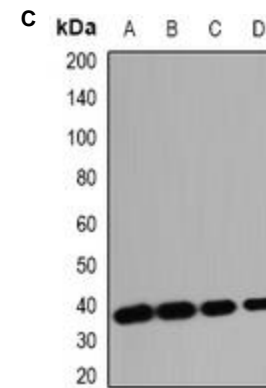
**APPLICATION:**  
**WB:** 1:500 – 1:2000  
**IH:** 1:50 – 1:200  
**IF/IC:** 1:50 – 1:200

**Note:** This information is only intended as a guide. The optimal dilutions must be



**Fig. A.** Immunohistochemical analysis of OMI staining in human breast cancer formalin fixed paraffin embedded tissue section.

**Fig. B.** Immunofluorescent analysis of OMI staining in MCF7 cells



**Fig C.** Western blot analysis of OMI expression in HT29 (A); MCF7 (B); mouse heart (C); mouse kidney (D) whole cell lysates.

### RELATED PRODUCTS:

- HtrA2/Omi Blocking Peptide (**Cat. No. 3497RBP**)
- HtrA2/Omi Antibody (**Cat. No. 3497R**)

**FOR RESEARCH USE ONLY! Not to be used on humans.**