

## Phospho-p70 S6 Kinase (Thr389/Thr412) Polyclonal Antibody

**CATALOG NO:** 3505-100

**AMOUNT:** 100 µl

**HOST:** Rabbit

**FORMULATION:**

In phosphate buffered saline, pH 7.4, 150 mM NaCl, 0.02% sodium azide and 50% glycerol.

**SPECIES REACTIVITY:** Human, Mouse, Rat

**STORAGE CONDITIONS:**

Store at -20 °C. For long-term storage, aliquot and freeze at -70°C. Avoid repeated freeze/thaw cycles.

**BACKGROUND:**

p70 S6 kinase is a mitogen activated Ser/Thr protein kinase that is required for cell growth and G1 cell cycle progression. P70 S6 kinase phosphorylates the S6 protein of the 40S ribosomal subunit and is involved in translational control of 5'oligopyrimidine tract mRNAs. A second isoform, p85 S6 kinase, is derived from the same gene and is identical to p70 S6 kinase except for 23 extra residues at the N-terminus that encode a nuclear localizing signal. Both isoforms lie on a mitogen-activated signaling pathway downstream of phosphoinositide 3 kinase (PI3K) and the target of rapamycin FRAP/mTOR, and distinct from the Ras/MAP kinase cascade.

**APPLICATION AND USAGE:**

**WB** 1:500-1:2000

**IHC** 1:50-1:200

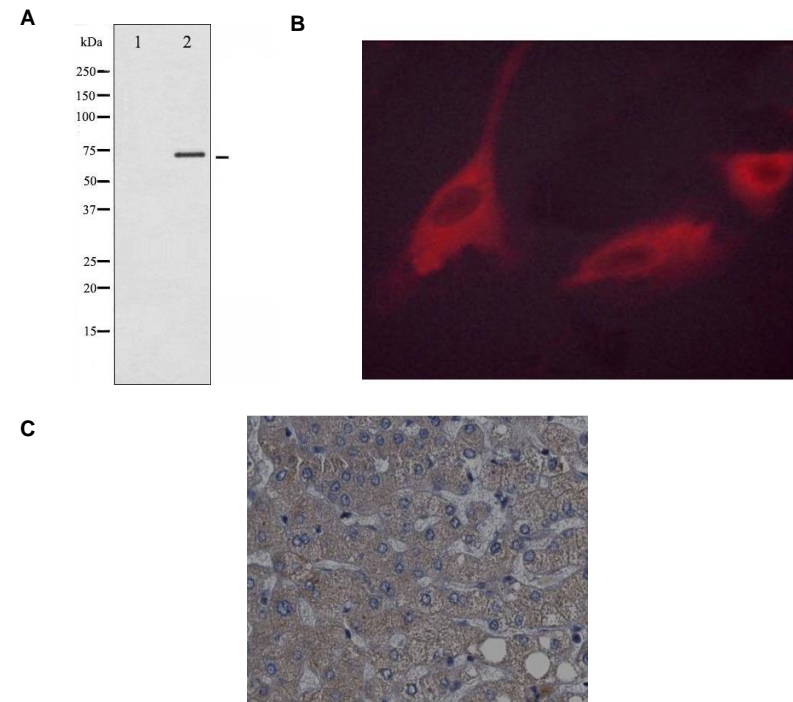
**IF/ICC** 1:100-1:500

However, the optimal conditions should be determined individually.

**SPECIFICITY:**

Phospho-p70 S6 Kinase (Thr389/412) Ab detects endogenous levels of p70 S6 Kinase only when phosphorylated at Threonine 389/412

**FOR RESEARCH USE ONLY! Not to be used in human subjects.**



**Fig. A.** Western blot analysis of p70 S6 Kinase phosphorylation expression in Insulin treated Jurkat whole cell lysates. The lane on the left is treated with the antigen-specific peptide.

**Fig. B.** Immunofluorescence analysis of Phospho-p70 S6 Kinase in 293 cells

**Fig. C.** IHC analysis of Phospho-p70 S6 Kinase in human liver cancer tissue sections

**RELATED PRODUCTS:**

- Phospho Alpha-synuclein (Tyr125) Antibody (**Cat. No. A1219**)
- Phospho-Chk2 (Thr68) Antibody (**Cat. No. A1265**)
- Phospho-ASK 1 (Ser83) Antibody (**Cat. No. A1251**)
- Phospho-AMPKβ1 (Ser182) Antibody (**Cat. No. A1248**)
- Phospho-CREB-1 (Ser133) Antibody (**Cat. No. A1269**)