

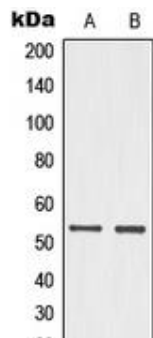
## Phospho-p53 (Ser15) Polyclonal Antibody

<b>CATALOG NO:</b>	3515-100
<b>AMOUNT:</b>	100 µg
<b>HOST:</b>	Rabbit
<b>IMMUNOGEN:</b>	KLH-conjugated synthetic peptide encompassing a sequence within the N-term region of human p53.
<b>SPECIES REACTIVITY:</b>	Human and Rat
<b>FORMULATION:</b>	In 0.42% Potassium phosphate; 0.87% Sodium chloride; pH 7.3; 30% glycerol; and 0.01% sodium azide.
<b>STORAGE CONDITIONS:</b>	Store at -20°C. For long term storage, aliquot and freeze at -70°C. Avoid repeated freeze/thaw cycles.

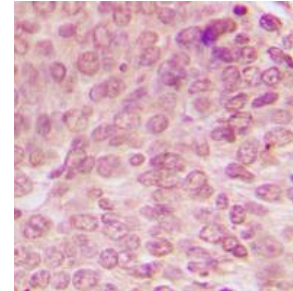
**BACKGROUND:** The p53 tumor suppressor protein plays a major role in cellular response to DNA damage and other genomic aberrations. The activation of p53 can lead to either cell cycle arrest and DNA repair or apoptosis. p53 is phosphorylated at multiple sites in vivo and by several different protein kinases in vitro. p53 can apparently be phosphorylated by ATM, ATR, and DNA-PK at Ser15; the phosphorylation impairs the ability of MDM2 to bind p53, promoting both the accumulation and functional activation of p53 in response to DNA damage.

**APPLICATIONS AND USAGE:** WB 1:500 – 1:1000; IHC 1:100 – 1:200; IF/IC 1:100 – 1:500; IP 1:10 – 1:100. However, the optimal conditions should be determined individually.

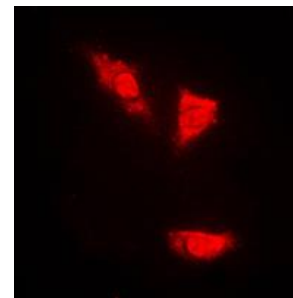
**SPECIFICITY:** Recognizes endogenous levels of p53 (pS15) protein.



**Western blot analysis of p53 (pS15) expression in HeLa UV-treated (A); PC12 (B) whole cell lysates**



**Immunohistochemical analysis of p53 (pS15) staining in human breast cancer formalin fixed paraffin embedded tissue section.**



**Immunofluorescent analysis of p53 (pS15) staining in PC12 cells**

### RELATED PRODUCTS:

- p53 (human) ELISA Kit (Cat # K4829-100)
- p53 Antibody (Cat # 3036R-100)
- p53 Antibody (Clone C6A5) (Cat # 3036-100)
- p53 Blocking Peptide (Cat # 3036RBP-50)
- p53 Mutant, human recombinant (Cat # 4832-5)

**FOR RESEARCH USE ONLY! Not to be used on humans.**