

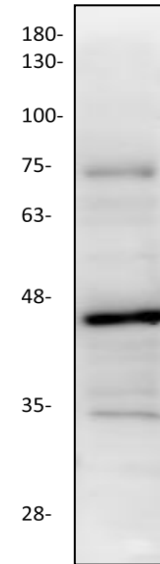
NDRG1 Antibody

ALTERNATE NAMES:	N-myc downstream regulated 1, CAP43, CMT4D, DRG1, GC4, HMSNL, NMSL, PROXY1, RIT42, RTP, TARG1, TDD5	
CATALOG #:	3526-30T	30 µg (Trial size)
	3526-100	100 µg
HOST:	Rabbit	
ISOTYPE:	IgG	
IMMUNOGEN:	Synthetic peptide at C-terminal (BV-M8)	
PURIFICATION:	Affinity purified rabbit IgG	
FORM:	Liquid	
FORMULATION:	0.5 mg/ml of antibody in PBS, 0.01 % BSA, 0.01 % thimerosal, and 50 % glycerol, pH 7.2	
SPECIES REACTIVITY:	Human, Mouse and Rat.	
STORAGE CONDITIONS:	Store for 1 year at -20°C from date of shipment. Avoid repeated freeze/thaw cycles.	

DESCRIPTION: NDRG1 is a cytoplasmic protein that is involved in stress responses, hormone responses, cell growth, and differentiation. NDRG1 is one of 4 members of the NDRG α/β -hydrolase family. It is classified as a tumor suppressor and heavy metal-response protein. NDRG1's functions include cell-cycle regulation, cellular differentiation, apoptosis, hypoxia response and metal-ion sensing. It is also essential for p53-mediated caspase activation and apoptosis. NDRG1 is ubiquitous; it is expressed most notably in placental membranes and prostate, kidney, small intestine, and ovary tissues. NDRG1 has reduced expression in adenocarcinomas compared to normal tissues. NDRG1 gene mutations are reported to be the cause for hereditary motor and sensory neuropathy-Lom (HMSNL), which is a severe autosomal recessive form of Charcot- Marie-Tooth (CMT) disease. In addition, decreased NDRG1 expression in glioma is linked to tumor progression. On the other hand, overexpression of NDRG1 is connected to malignant status of esophageal cancer. NDRG1 may also have a role in portal vein invasion and intrahepatic metastasis in human hepatocellular carcinoma.

APPLICATION: Western blot: 1:200

Note: This information is only intended as a guide. The optimal dilutions must be determined by the user.



Western blot of 3T3 cell lysate with NDRG1 antibody

RELATED PRODUCTS:

- NDRG1 Blocking Peptide (**Cat. No. 3526BP-50**)
- NDRG1 recombinant protein (**Cat. No. 6391-100**)

FOR RESEARCH USE ONLY! Not to be used on humans.

