

## Phospho-Tau Polyclonal Antibody

CATALOG NO:	3550R-100
AMOUNT:	100 µl
CONCENTRATION:	1 mg/ml
HOST/ISOTYPE:	Rabbit IgG
MOLECULAR WT:	80 kDa
SPECIES REACTIVITY:	Human, Mouse, Rat

**SPECIFICITY:**

Phospho-Tau (S404) Polyclonal Antibody detects endogenous levels of Tau protein only when phosphorylated at S404.

**IMMUNOGEN:**

Synthesized peptide derived from human Tau around the phosphorylation site of S404. Immunogen region 660-740aa

**PURIFICATION:**

The antibody was affinity-purified from rabbit antiserum by affinity-chromatography using epitope specific immunogen.

**FORMULATION:**

100 µl affinity purified rabbit polyclonal antibody in phosphate-buffered saline (PBS) containing 50% glycerol, 0.5% BSA and 0.02% sodium azide

**STORAGE CONDITIONS:**

Store at -20°C. Avoid repeated freeze/thaw cycles.

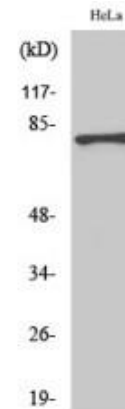
**BACKGROUND:**

Tau, a microtubule-binding protein which serves to stabilize microtubules in growing axons, is found to be hyperphosphorylated in paired helical filaments (PHF), the major fibrous component of neurofibrillary lesions associated with Alzheimer's disease. Hyperphosphorylation of Tau is thought to be the critical event leading to the assembly of PHF. Six Tau protein isoforms have been identified, all of which are phosphorylated by GSK3. This presents the possibility that miscues in GSK3 signaling contribute to the onset of Alzheimer's

**APPLICATION:**

WB 1:500-1:2000; ELISA 1:20000

However, the optimal concentrations should be determined individually. Other applications have not been determined.



Western Blot (WB) analysis of various cells using Phospho-Tau (S404) Polyclonal Antibody in HeLa cell lysate

**RELATED PRODUCTS:**

- Tau Antibody (Cat. No. 3549R-100)
- Tau-13 Antibody (Clone B11E8) (Cat. No. 3453-100)
- Tau Blocking Peptide (Cat. No. 3549RBP-50)

**FOR RESEARCH USE ONLY! Not to be used on humans.**