

## TLR5 (Toll-like receptor 5) Polyclonal Antibody

<b>CATALOG #:</b>	3555R-100
<b>AMOUNT:</b>	100 µg
<b>LOT #:</b>	_____
<b>HOST:</b>	Rabbit
<b>IMMUNOGEN:</b>	Synthetic peptide surrounding amino acid 829 of human TLR5 (Internal ID# BV-D86G)
<b>FORMULATION:</b>	100 µg (0.5 mg/ml) affinity purified rabbit anti-TLR5 polyclonal antibody in phosphate-buffered saline (PBS) containing 30% glycerol, 0.5% BSA, and 0.01% thimerosal.
<b>SPECIES REACTIVITY:</b>	Human, Mouse, Rat

### STORAGE CONDITIONS:

Store at 4°C. For long-term storage, aliquot and freeze at -20°C or -70°C. Avoid repeated freeze/defrost cycles.

### BACKGROUND:

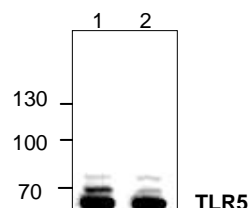
The Toll-like receptor (TLR) family of proteins are characterized by a highly conserved Toll homology (TH) domain, which is essential for Toll-induced signal transduction. TLR1, as well as the other TLR family members, are type I transmembrane receptors that characteristically contain an extracellular domain consisting of several leucine-rich regions along with a single cytoplasmic Toll/IL-1R-like domain. TLR2 and TLR4 are activated in response to lipopolysacchride (LPS) stimulation, which results in the activation and translocation of NFκB and suggests that these receptors are involved in mediating inflammatory responses. TLR6 is highly homologous to TLR1, and like other members of TLR family, it induces NFκB signaling upon activation. Expression of TLR receptors is highest in peripheral blood leukocytes, macrophages, and monocytes.

### SPECIFICITY:

The antibody recognizes ~97 kDa TLR5 in sample from human, mouse and rat origins. Reactivity to other species has not been tested. Blocking peptide (Cat.# 3555RBP-50) is available separately.

### APPLICATION AND USAGE:

The antibody can be used in Western blotting (0.5-4 µg/ml). However, the optimal conditions should be determined individually. Other applications have not been determined.



**Cat. #: 3555-100**  
Western blot analysis of TLR5 expression in Jurkat cell lysate (Lane 1 & 2).

**FOR RESEARCH USE ONLY! Not to be used on humans.**

### RELATED PRODUCTS:

#### Apoptosis Detection Kits & Reagents

- Annexin V Kits & Bulk Reagents
- Caspase Assay Kits & Reagents
- Mitochondrial Apoptosis Kits & Reagents
- Nuclear Apoptosis Kits & Reagents
- Apoptosis Inducers and Set
- Apoptosis siRNA Vectors

#### Cell Fractionation System

- Mitochondria/Cytosol Fractionation Kit
- Nuclear/Cytosol Fractionation Kit
- Membrane Protein Extraction Kit
- Cytosol/Particulate Rapid Separation Kit
- Mammalian Cell Extraction Kit
- ractionPREP Fractionation System

#### Cell Proliferation & Senescence

- Quick Cell Proliferation Assay Kit
- Senescence Detection Kit
- High Throughput Apoptosis/Cell Viability Assay Kits
- LDH-Cytotoxicity Assay Kit
- Bioluminescence Cytotoxicity Assay Kit
- Live/Dead Cell Staining Kit

#### Cell Damage & Repair

- HDAC Fluorometric & Colorimetric Assays & Drug Discovery Kits
- HAT Colorimetric Assay Kit & Reagents
- DNA Damage Quantification Kit
- Glutathione & Nitric Oxide Fluorometric & Colorimetric Assay Kits

#### Signal Transduction

- cAMP & cGMP Assay Kits
- Akt & JNK Activity Assay Kits
- Beta-Secretase Activity Assay Kit

#### Adipocyte & Lipid Transfer

- Recombinant Adiponectin, Survivin, & Leptin
- CETP Activity Assay & Drug Discovery Kits
- PLTP Activity Assay & Drug Discovery Kits
- Total Cholesterol Quantification Kit

#### Molecular Biology & Reporter Assays

- siRNA Vectors
- Cloning Insert Quick Screening Kit
- Mitochondrial & Genomic DNA Isolation Kits
- 5 Minutes DNA Ligation Kit
- 20 Minutes Gel Staining/Destaining Kit
- β-Galactosidase Staining Kit & Luciferase Reporter Assay Kit

#### Growth Factors and Cytokines

#### Monoclonal and Polyclonal Antibodies