

TLR8 (Toll-like receptor 8) Antibody (Clone 44B05)

CATALOG #:	3558-100
AMOUNT:	100 µl
LOT #:	_____
CLONE#:	44B05
ISOTYPE:	Mouse IgG1
IMMUNOGEN:	Recombinant human TLR8
SPECIES REACTIVITY:	Human

FORMULATION:

100 µl (1 mg/ml) Protein G purified mouse anti-TLR8 monoclonal antibody in phosphate buffered saline (PBS), pH 7.2, containing 50% glycerol, 1% BSA, 0.02% thimerosal.

STORAGE CONDITIONS:

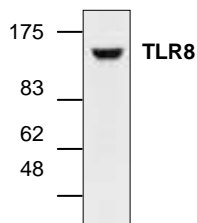
Store at -20°C. For long-term storage, aliquot and freeze at -70°C. Avoid repeated freeze/thaw.

BACKGROUND:

The Toll-like receptor (TLR) family of proteins are characterized by a highly conserved Toll homology (TH) domain, which is essential for Toll-induced signal transduction. TLR1 contains an extracellular domain consisting of several leucine-rich regions along with a single cytoplasmic Toll/IL-1R-like domain. TLR2 and TLR4 are activated in response to lipopolysaccharide (LPS) stimulation, which results in the activation and translocation of NFκB and suggests that these receptors are involved in mediating inflammatory responses. TLR6 is highly homologous to TLR1, and like other members of TLR family, it induces NFκB signaling upon activation. TLR8 gene contains three exons, two of which have coding function. Expression of TLR receptors is highest in peripheral blood leukocytes, macrophages, and monocytes.

APPLICATION AND USAGE:

The antibody can be used for Western blotting (1:200-1000 dilutions) and FACS analysis. Ramos cell lysate can be used as a positive control and a 120 kDa band is detected in Western blotting. For FACS analysis, we recommend 1-4 µl per million cells. However, the optimal conditions should be determined individually.



Cat.# 3558-100
Western blot analysis of TLR8 in cell lysate of 293 transfected with human TLR8.

FOR RESEARCH USE ONLY! Not to be used on humans.

RELATED PRODUCTS:

Apoptosis Detection Kits & Reagents

- Annexin V Kits & Bulk Reagents
- Caspase Assay Kits & Reagents
- Mitochondrial Apoptosis Kits & Reagents
- Nuclear Apoptosis Kits & Reagents
- Apoptosis Inducers and Set
- Apoptosis siRNA Vectors

Cell Fractionation System

- Mitochondria/Cytosol Fractionation Kit
- Nuclear/Cytosol Fractionation Kit
- Membrane Protein Extraction Kit
- Cytosol/Particulate Rapid Separation Kit
- Mammalian Cell Extraction Kit
- FractionPREP Fractionation System

Cell Proliferation & Senescence

- Quick Cell Proliferation Assay Kit
- Senescence Detection Kit
- High Throughput Apoptosis/Cell Viability Assay Kits
- LDH-Cytotoxicity Assay Kit
- Bioluminescence Cytotoxicity Assay Kit
- Live/Dead Cell Staining Kit

Cell Damage & Repair

- HDAC Fluorometric & Colorimetric Assays & Drug Discovery Kits
- HAT Colorimetric Assay Kit & Reagents
- DNA Damage Quantification Kit
- Glutathione & Nitric Oxide Fluorometric & Colorimetric Assay Kits

Signal Transduction

- cAMP & cGMP Assay Kits
- Akt & JNK Activity Assay Kits
- Beta-Secretase Activity Assay Kit

Adipocyte & Lipid Transfer

- Recombinant Adiponectin, Survivin, & Leptin
- CETP Activity Assay & Drug Discovery Kits
- PLTP Activity Assay & Drug Discovery Kits
- Total Cholesterol Quantification Kit

Molecular Biology & Reporter Assays

- siRNA Vectors
- Cloning Insert Quick Screening Kit
- Mitochondrial & Genomic DNA Isolation Kits
- 5 Minutes DNA Ligation Kit
- 20 Minutes Gel Staining/Destaining Kit
- β-Galactosidase Staining Kit & Luciferase Reporter Assay Kit

Growth Factors and Cytokines

Monoclonal and Polyclonal Antibodies