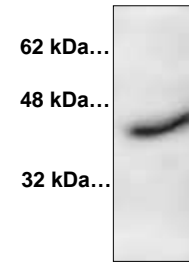


Cathepsin K Polyclonal Antibody

CATALOG #:	3588-100
AMOUNT:	100 µg
HOST:	Rabbit
IMMUNOGEN:	Synthetic peptide surrounding amino acid 321 of rat cathepsin K (ID# BV-88).
SPECIES REACTIVITY:	Human, Mouse, Rat, Chicken, Rabbit, Pig
FORMULATION:	100 µg (0.5 mg/ml) protein A purified rabbit anti-cathepsin K polyclonal antibody in phosphate buffered saline (PBS), pH 7.2, containing 30% glycerol, 0.5% BSA, 0.01% thimerosal.
BACKGROUND:	Cathepsin family of proteases contains several diverse classes of enzymes. The cysteine protease class comprises cathepsin B, H, K, L, O, and S. The aspartyl protease class contains cathepsin D and E. Cathepsin G belongs to the serine protease class. Cathepsins are involved in various cellular events such as peptide biosynthesis, protein degradation, and apoptosis. Cathepsin K expression is highest in bone, cartilage, and skeletal muscle.
SPECIFICITY:	The antibody detects proform (43 kDa) and the mature form (29 kDa) of cathepsin K.
APPLICATION AND USAGE:	The antibody can be used for Western blotting (0.5-4 µg/ml), and in Immunohistochemistry (2.5 µg/ml). From customer's feedback, the antibody can also be used in Immunoprecipitation. However, the optimal conditions should be determined individually. Blocking peptide is available separately (Cat. # 3588BP-50).
STORAGE CONDITIONS:	Store at -20 °C. For long-term storage, aliquot and freeze at -70 °C. Avoid repeated freeze/thaw cycles.



Western blot with Cathepsin K Polyclonal Antibody – Cat # 3588-100

Rat kidney tissue lysate (200 ng) loaded
 Blocking/Dilution buffer: 5% NFD (1 hr at RT) / TBST
 Cathepsin K Polyclonal Antibody used at 1:1000 dilution - O/N at 4°C.
 Goat Anti-Rabbit IgG peroxidase conjugated used at 1:10,000 dilution – 1 hr at RT

Predicted band size of proform : 43 kDa.
 Observed band size: 43 kDa.



Courtesy of LSBio

IHC staining of human thyroid tissue with Cathepsin K Polyclonal antibody:

Immunohistochemistry of formalin fixed, paraffin-embedded tissue after heat-induced antigen retrieval. 2.5 µg/ml of antibody used for staining. After incubation with the primary antibody, slides were incubated with biotinylated secondary antibody, followed by alkaline phosphatase-streptavidin and chromogen.

RELATED PRODUCTS:

- Cathepsin B Antibody (Cat # 3190-100)
- Cathepsin B Blocking Peptide (Cat # 3190BP-50)
- Cathepsin D Antibody (Cat # 3191R-100)
- Cathepsin F Antibody (Cat # 3371-100)
- Cathepsin K Blocking Peptide (Cat # 3368BP-50)
- Cathepsin K Blocking Peptide (Cat # 3588BP-50)