

Beta-Actin Antibody (Clone BA3R)

ALTERNATE NAMES:	β -Actin, PS1TP5BP1, ACTB, Beta-actin, b-actin
CATALOG #:	3598R-100
AMOUNT:	100 μ l
HOST/ISOTYPE:	Mouse IgG2b
IMMUNOGEN:	β -Actin N-terminal peptide-KLH conjugates.
PURIFICATION:	Protein A affinity chromatography from mouse ascites fluid.
MOLECULAR WEIGHT:	~42 kDa
FORM:	Liquid
FORMULATION:	1 mg/mL in 10 mM PBS, pH 7.2, with 0.05% NaN ₃
SPECIES REACTIVITY:	Human, mouse, rat, rabbit, and chicken. β -Actin from other species may also be detectable.

STORAGE CONDITIONS: Store at -20°C for 2 years or more. Centrifuge after first thaw to maximize product recovery. Aliquot to avoid repeated freeze-thaw cycles. Store aliquots at 4°C for several days to weeks.

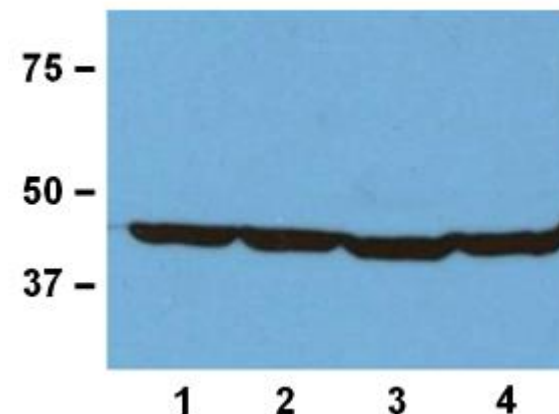
DESCRIPTION: Actin is expressed in all eukaryotic cells and is the major component of the cytoskeleton. At least six types of actin are present in mammalian tissues and fall into three classes. Alpha actin expression is limited to various types of muscle and it regulates contactile potentials for the muscle cells, whereas beta and gamma actin, also known as cytoplasmic actin, are predominantly expressed in nonmuscle cells, controlling cell structure and motility.

APPLICATION: Western blot: ~1:1000 – 1:5000. For best results with other assays (e.g.: Dot, ELISA, IS, etc), please determine optimal working dilution by titration test.

SPECIFICITY: Recognizes native and denatured forms of β -Actin (~42 kDa).

Note: This information is only intended as a guide. The optimal dilutions must be determined by the user.

FOR RESEARCH USE ONLY! Not to be used on humans.



1:1000 (1 μ g/mL) Ab dilution used in WB of 20 μ g/lane tissue lysates from human (1), mouse (2), rat (3), and rabbit (4).

RELATED PRODUCTS:

- Beta-Actin Antibody (Cat # 3662-100)
- Beta-Actin Blocking Peptide (Cat # 3662BP-50)
- Beta-Actin Antibody (Cat # 3850-100)
- Beta-Actin Blocking Peptide (Cat # 3850BP-50)
- Beta-Actin Antibody (Cat # 3917-100)
- Beta-Actin Blocking Peptide (Cat # 3917BP-50)