

## Tyrosine Hydroxylase Antibody

<b>CATALOG #:</b>	3615-100
<b>AMOUNT:</b>	100 µl
<b>HOST:</b>	Rabbit
<b>IMMUNOGEN:</b>	SDS-denatured rat tyrosine hydroxylase, purified from pheochromocytoma.
<b>SPECIES REACTIVITY:</b>	Mammalian
<b>PURIFICATION:</b>	Prepared from rabbit serum by affinity purification using a protein A column and using a column to which the immunogen was coupled.
<b>FORMULATION:</b>	100 µl in 10 mM HEPES (pH 7.5), 150 mM NaCl, 100 µg per ml BSA and 50% glycerol.
<b>STORAGE CONDITIONS:</b>	Store at -20°C.

### DESCRIPTION:

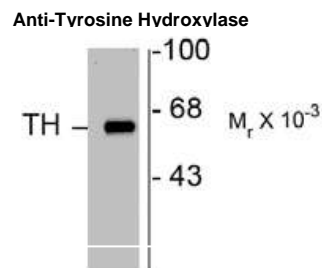
Tyrosine hydroxylase (TH) is the rate-limiting enzyme in the synthesis of the catecholamines dopamine and norepinephrine. TH antibodies can therefore be used as markers for dopaminergic and noradrenergic neurons in a variety of applications including depression, schizophrenia, Parkinson's disease and drug abuse (Kish et al., 2001; Zhu et al., 2000; Zhu et al., 1999). TH antibodies can also be used to explore basic mechanisms of dopamine and norepinephrine signaling (Witkovsky et al., 2000; Salvatore et al., 2001; Dunkley et al., 2004).

### SPECIFICITY:

Antibody is specific for the ~60 kDa tyrosine hydroxylase protein. It recognizes all mammalian and at least some non-mammalian forms of the enzyme in Western blots and in IHC/IF.

### APPLICATION AND USAGE:

The antibody can be used for Western blotting (1:1000), Immunofluorescence (1:1000) and Immunohistochemistry (1:1000). However, the optimal conditions should be determined individually.



### RELATED PRODUCTS:

- Phospho (Ser<sup>19</sup>) Tyrosine Hydroxylase Antibody (Cat. No. 3612-100)
- Phospho (Ser<sup>31</sup>) Tyrosine Hydroxylase Antibody (Cat. No. 3613-100)
- Tyrosine Hydroxylase Antibody (Cat. No. 3615-100)
- Phospho (Tyr<sup>1472</sup>) NMDA NR2B-Subunit Antibody (Cat. No. 3616-100)
- Phospho-Tyrosine Hydroxylase Antibody (Cat. No. 3649-100)
- PTP1B Antibody (Cat. No. 3122-100)
- PTP1B Antibody (Cat. No. 3171-100)
- PTP1B Antibody (Cat. No. 3174-100)