

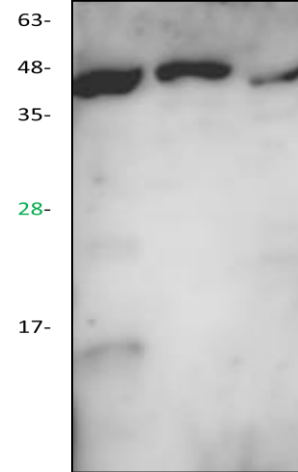
G3BP Antibody

ALTERNATE NAMES:	ATP-dependent DNA helicase VIII	
CATALOG NO:	3619-30T	30 µg (Trial size)
	3619-100	100 µg
HOST:	Rabbit	
ISOTYPE:	IgG	
IMMUNOGEN:	Synthetic peptide at C-terminal (BV-M24)	
PURIFICATION:	Affinity purified rabbit IgG	
FORM:	Liquid	
FORMULATION:	0.5 mg/ml of antibody in PBS, 0.01 % BSA, 0.01 % thimerosal, and 50 % glycerol, pH 7.2	
SPECIES REACTIVITY:	Human, Mouse and Rat.	
STORAGE CONDITIONS:	Store for 1 year at -20°C from date of shipment. Avoid repeated freeze/thaw cycles.	

DESCRIPTION: G3BP1 (GTPase activating protein (SH3 domain) binding protein 1), also known as G3BP or HDH-VIII, is a ubiquitously expressed protein that localizes to the cytoplasm in proliferating cells and to the nucleus in non-proliferating cells. One of several DNA-unwinding enzymes, G3BP1 functions as a sequence-specific, phosphorylation-dependent helicase that unwinds partial RNA and DNA duplexes containing hanging 3'- or 5'-ends. G3BP1 uses magnesium as a cofactor and, in addition to its helicase activity, acts as an endoribonuclease that cleaves mRNA between adenine and cytosine residues at the 3'-UTR. An element of the Ras signaling pathway, G3BP1 binds to the SH3 domain of Ras GTPase-activating protein (Ras GAP) in proliferating cells, thereby regulating Ras signaling events in developing tissues. Due to its involvement in both DNA replication and signaling pathways within the cell, G3BP1 expression is implicated in the pathogenesis of several cancers, including esophageal squamous carcinoma.

APPLICATION: Western blot: 1:200

Note: This information is only intended as a guide. The optimal dilutions must be determined by the user.



Western blot with G3BP antibody
Lane 1: Jurkat cell lysate.
Lane 2: 3T3 cell lysate.
Lane 3: Rat kidney lysate

RELATED PRODUCTS:

- G3BP Blocking Peptide (**Cat. No. 3619BP-50**)
- PFU DNA polymerase (**Cat. No. 9003-500, -2500**)
- T4 DNA Ligase (5 µl) (**Cat. No. 9101-250**)
- Taq DNA polymerase (**Cat. No. 9001-500, -2500**)
- TurboNuclease, Recombinant (**Cat. No. 9207-50KU**)
- Turbo3C (HRV3C) Protease, Recombinant (**Cat. No. 9206-1**)
- TurboTEV Protease, Recombinant (**Cat. No. 9205-1**)
- Proteinase K, Recombinant (**Cat. No. 9210-100, -500, -1G, -10G**)
- Proteinase K, 20 mg/ml Solution (**Cat. No. 9211-5, -25**)

FOR RESEARCH USE ONLY! Not to be used on humans.