

E-Selectin Polyclonal Antibody

CATALOG NO: 3631-30T 30 µg (Trial size)
3631-100 100 µg

HOST: Rabbit

IMMUNOGEN: Synthetic peptide surrounding amino acid 584 of human E-Selectin (ID# BV-346)

SPECIES REACTIVITY: Human, Mouse, Rat

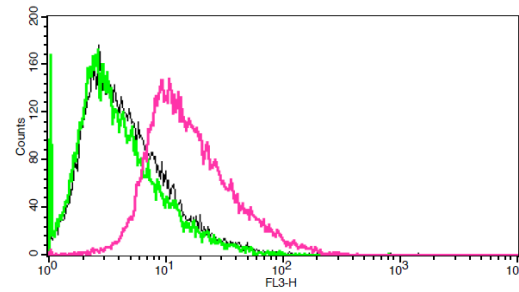
FORMULATION: 0.5mg/ml in phosphate buffered saline (PBS), pH 7.2, containing 30% glycerol, 0.5% BSA, 5 mM EDTA and 0.03% proclin.

STORAGE CONDITIONS: Store at -20°C. For long term storage, aliquot and freeze at 70°C. Avoid repeated freeze/thaw cycles.

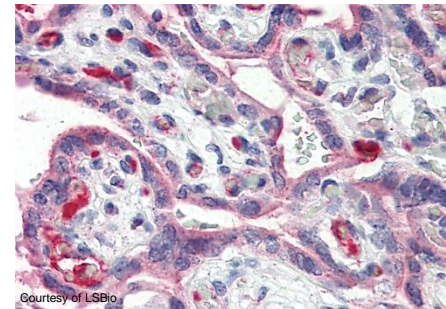
DESCRIPTION: Selectins are a family of carbohydrate-binding proteins involved in mediating cellular interactions with leukocytes. E-Selectin (also called ELMA-1, CD62E) expressed on endothelial cells. L-Selectin (also called LECAM-1) is expressed on the majority of B and naïve T cells and on most monocytes, neutrophils and eosinophils. P-Selectin (also called GMP-140) expressed on activated platelets and endothelial cells. Selectins interact with specific carbohydrates expressed by activated endothelial cells, monocytes, and neutrophils.

SPECIFICITY: The antibody recognizes 67 kDa E-Selectin in samples from human, mouse, and rat origins. Jurkat cell lysate, mouse small intestine and rat kidney tissue lysate can be used as positive controls.

APPLICATION: The antibody can be used for Western blotting (0.5-4 µg/ml), and in Immunohistochemistry (5 µg/ml). From researcher's feedback, the antibody also works in Immunoprecipitation (10-20 µg/ml). However, the optimal conditions should be determined individually. Blocking peptide (Cat. # 3631BP-50) is available separately.



Flow cytometric analysis of Jurkat cells using E-Selectin Antibody (red) with negative controls (black and green).



IHC staining of human placenta with E-Selectin Polyclonal antibody: Immunohistochemistry of formalin fixed, paraffin-embedded tissue after heat-induced antigen retrieval. 5 µg/ml of antibody used for staining. After incubation with the primary antibody, slides were incubated with biotinylated secondary antibody, followed by alkaline phosphatase-streptavidin and chromogen.

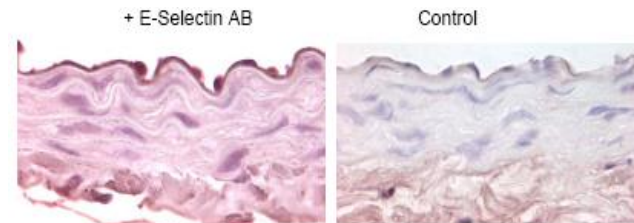
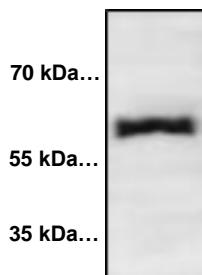


Image courtesy of a client. IHC staining of mouse aorta from obese diabetic mice with E-Selectin Polyclonal antibody: Immunohistochemistry of paraffin-embedded tissue after heat-induced antigen retrieval. 10-20 µg/ml of antibody used for staining. After incubation with the primary antibody, slides were incubated with biotinylated goat anti-rabbit HRP and visualized with DAB substrate using ABC staining system.

RELATED PRODUCTS:

- E-Selectin Blocking Peptide (Cat # 3631BP-50)
- Human CellExp™ CD62E/E-Selectin, human recombinant (Cat # 7434-20, -100)
- L-Selectin/CD62L Antibody (Cat # 3632-100)
- P-Selectin Antibody (Cat # 3633R-100)
- PSGL-1 Antibody (Cat # 6657-100)

FOR RESEARCH USE ONLY! Not to be used on humans.



Western blot with E-Selectin Polyclonal Antibody

Jurkat cell lysate (80 µg) loaded
Blocking/Dilution buffer: 5% NFDm (1 hr at RT) / TBST
E-Selectin Polyclonal Antibody used at 1:1000 dilution - O/N at 4°C.
Goat Anti-Rabbit IgG peroxidase conjugated used at 1:10,000 dilution - 1 hr at RT

Predicted band size: ~ 67 kDa.
Observed band size: ~ 67 kDa.