

## L-Selectin Polyclonal Antibody

**CATALOG NO:** 3632-30T 30 µg (Trial size)  
3632-100 100 µg

**HOST:** Rabbit

**IMMUNOGEN:** Synthetic peptide surrounding amino acid 69 of human L-Selectin (ID# BV-380)

### FORMULATION:

0.5 mg/ml protein A purified rabbit anti-L-Selectin polyclonal antibody in phosphate-buffered saline (PBS) containing 30% glycerol, 0.5% BSA, and 0.01% thimerosal.

**SPECIES REACTIVITY:** Human

### STORAGE CONDITIONS:

Store at -20°C. For long term storage, aliquot and freeze at -70°C. Avoid repeated freeze/thaw cycles.

### DESCRIPTION:

Selectins are a family of carbohydrate-binding proteins involved in mediating cellular interactions with leukocytes. E-Selectin (also called ELMA-1) expressed on endothelial cells. L-Selectin (also called LECAM-1) is expressed on the majority of B and naïve T cells and on most monocytes, neutrophils and eosinophils. P-Selectin (also called GMP-140) expressed on activated platelets and endothelial cells. Selectins interact with specific carbohydrates expressed by activated endothelial cells, monocytes, and neutrophils.

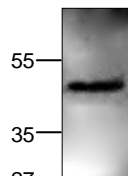
### SPECIFICITY:

The antibody recognizes L-Selectin in human sample, and in a lesser extent to mouse, and rat samples.

### APPLICATION:

The antibody can be used for Western blotting (0.5-4 µg/ml). Based on researcher's feedback, it can also be used in immunoprecipitation (10-20 µg/ml) and immunohistochemistry (10-20 µg/ml). However, the optimal concentrations should be determined individually.

**FOR RESEARCH USE ONLY! Not to be used on humans.**



**L-Selectin**

**Cat.# 3632-100**

Western blot analysis of L-Selectin expression in Jurkat cell lysate.

### RELATED PRODUCTS:

#### Apoptosis Detection Kits & Reagents

- Annexin V Kits & Bulk Reagents
- Caspase Assay Kits & Reagents
- Mitochondrial Apoptosis Kits & Reagents
- Nuclear Apoptosis Kits & Reagents
- Apoptosis Inducers and Set
- Apoptosis siRNA Vectors

#### Cell Fractionation System

- Mitochondria/Cytosol Fractionation Kit
- Nuclear/Cytosol Fractionation Kit
- Membrane Protein Extraction Kit
- Cytosol/Particulate Rapid Separation Kit
- Mammalian Cell Extraction Kit
- FractionPREP Fractionation System

#### Cell Proliferation & Senescence

- Quick Cell Proliferation Assay Kit
- Senescence Detection Kit
- High Throughput Apoptosis/Cell Viability Assay Kits
- LDH-Cytotoxicity Assay Kit
- Bioluminescence Cytotoxicity Assay Kit
- Live/Dead Cell Staining Kit

#### Cell Damage & Repair

- HDAC Fluorometric & Colorimetric Assays & Drug Discovery Kits
- HAT Colorimetric Assay Kit & Reagents
- DNA Damage Quantification Kit
- Glutathione & Nitric Oxide Fluorometric & Colorimetric Assay Kits

#### Signal Transduction

- cAMP & cGMP Assay Kits
- Akt & JNK Activity Assay Kits
- Beta-Secretase Activity Assay Kit

#### Adipocyte & Lipid Transfer

- Recombinant Adiponectin, Survivin, & Leptin
- CETP Activity Assay & Drug Discovery Kits
- PLTP Activity Assay & Drug Discovery Kits
- Total Cholesterol Quantification Kit

#### Molecular Biology & Reporter Assays

- siRNA Vectors
- Cloning Insert Quick Screening Kit
- Mitochondrial & Genomic DNA Isolation Kits
- 5 Minutes DNA Ligation Kit
- 20 Minutes Gel Staining/Destaining Kit
- β-Galactosidase Staining Kit & Luciferase Reporter Assay Kit

#### Growth Factors and Cytokines

#### Monoclonal and Polyclonal Antibodies