

## Endothelial Lipase Polyclonal Antibody

<b>CATALOG NO:</b>	3657-30T	30 µg (Trial size)
	3657-100	100 µg
<b>HOST:</b>	Rabbit	
<b>IMMUNOGEN:</b>	Synthetic peptide surrounding amino acid 22 of human Endothelial Lipase (ID# BV-368)	
<b>SPECIES REACTIVITY:</b>	Human, Mouse, Rat, Porcine, Bovine	

### FORMULATION:

0.5 mg/ml affinity purified rabbit anti-Endothelial Lipase polyclonal antibody in phosphate buffered saline (PBS), pH 7.2, containing 30% glycerol, 0.5% BSA, 0.01% thimerosal.

### STORAGE CONDITIONS:

Store at -20°C. For long-term storage, aliquot and freeze at -70°C. Avoid repeated freeze/thaw cycles.

### BACKGROUND:

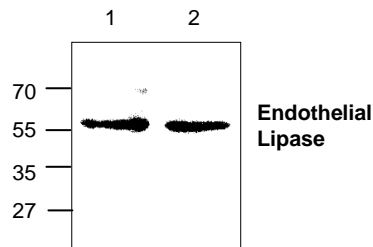
Endothelial lipase (EL) is a member of the triglyceride lipase gene family. It functions primarily as a phospholipase and has low triglyceride lipase activity. It was originally cloned from endothelial cells and found to be expressed in high level in the liver, placenta, lung, ovary, and macrophage. The wide spread distribution of this protein suggests it plays a general role in lipid metabolism. Human endothelial lipase has an estimated molecular weight of 57 kDa.

### SPECIFICITY:

The antibody detects 57 kDa band in samples from human, mouse, rat, porcine, and ovine origins. Blocking peptide (Cat.# 3657BP-50) is available separately.

### APPLICATION AND USAGE:

The antibody can be used for Western blotting (0.5-4 µg/ml). Based on researcher's feedback, it also works well in immunohistochemistry (5-20 µg/ml, frozen & paraffin sections, human thyroid). However, the optimal conditions should be determined individually.



**Cat.# 3657-100**  
Western blots analysis of Endothelial Lipase with Jurkat cell lysate.

**FOR RESEARCH USE ONLY! Not to be used on humans.**

## RELATED PRODUCTS:

### Apoptosis Detection Kits & Reagents

- Annexin V Kits & Bulk Reagents
- Caspase Assay Kits & Reagents
- Mitochondrial Apoptosis Kits & Reagents
- Nuclear Apoptosis Kits & Reagents
- Apoptosis Inducers and Set
- Apoptosis siRNA Vectors

### Cell Fractionation System

- Mitochondria/Cytosol Fractionation Kit
- Nuclear/Cytosol Fractionation Kit
- Membrane Protein Extraction Kit
- Cytosol/Particulate Rapid Separation Kit
- Mammalian Cell Extraction Kit
- FractionPREP Fractionation System

### Cell Proliferation & Senescence

- Quick Cell Proliferation Assay Kit
- Senescence Detection Kit
- High Throughput Apoptosis/Cell Viability Assay Kits
- LDH-Cytotoxicity Assay Kit
- Bioluminescence Cytotoxicity Assay Kit
- Live/Dead Cell Staining Kit

### Cell Damage & Repair

- HDAC Fluorometric & Colorimetric Assays & Drug Discovery Kits
- HAT Colorimetric Assay Kit & Reagents
- DNA Damage Quantification Kit
- Glutathione & Nitric Oxide Fluorometric & Colorimetric Assay Kits

### Signal Transduction

- cAMP & cGMP Assay Kits
- Akt & JNK Activity Assay Kits
- Beta-Secretase Activity Assay Kit

### dipocyte & Lipid Transfer

- Recombinant Adiponectin, Survivin, & Leptin
- CETP Activity Assay & Drug Discovery Kits
- PLTP Activity Assay & Drug Discovery Kits
- Total Cholesterol Quantification Kit

### Molecular Biology & Reporter Assays

- siRNA Vectors
- Cloning Insert Quick Screening Kit
- Mitochondrial & Genomic DNA Isolation Kits
- 5 Minutes DNA Ligation Kit
- 20 Minutes Gel Staining/Destaining Kit
- β-Galactosidase Staining Kit & Luciferase Reporter Assay Kit

### Growth Factors and Cytokines

### Monoclonal and Polyclonal Antibodies