

Math1/Atoh1 Polyclonal Antibody

CATALOG NO:	3658-30T	30 µg (Trial size)
	3658-100	100 µg
IMMUNOGEN:	Synthetic peptide surrounding amino acid 190 of human Math1 (Internal ID# BV-846)	
SPECIES REACTIVITY:	Human, Mouse, Rat	

FORMULATION:

Affinity purified rabbit anti-Math1 (also called ATH1) polyclonal antibody in phosphate buffered saline (PBS), pH 7.2, containing 30% glycerol, 0.5% BSA, 5 mM EDTA and 0.03% proclin

STORAGE CONDITIONS:

Store at -20°C. For long-term storage, aliquot and freeze at -70°C. Avoid repeated freeze/thaw cycles.

BACKGROUND:

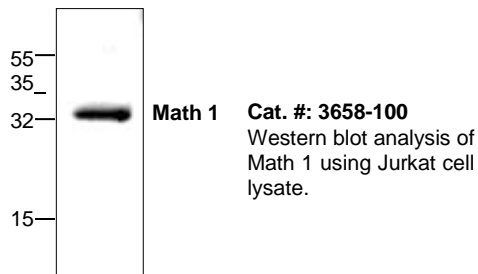
Math1 belongs to the basic helix-loop-helix (BHLH) family of transcription factors. It activates E-box dependent transcription along with E47. It is neural-specific and is switched on during differentiation into neuroectoderm.

SPECIFICITY:

The antibody detects Math1 in samples from human, mouse, and rat origins. Other species have not been tested.

APPLICATION AND USAGE:

The antibody can be used for Western blotting (1:200-1000). Per researcher's feedback, it also works in immunohistochemistry (1:100-500). However, the optimal conditions should be determined individually. Other applications have not been determined.

**RELATED PRODUCTS:**

Apoptosis Detection Kits & Reagents

- Annexin V Kits & Bulk Reagents
- Caspase Assay Kits & Reagents
- Mitochondrial Apoptosis Kits & Reagents
- Nuclear Apoptosis Kits & Reagents
- Apoptosis Inducers and Set
- Apoptosis siRNA Vectors

Cell Fractionation System

- Mitochondria/Cytosol Fractionation Kit
- Nuclear/Cytosol Fractionation Kit
- Membrane Protein Extraction Kit
- Cytosol/Particulate Rapid Separation Kit
- Mammalian Cell Extraction Kit
- FractionPREP Fractionation System

Cell Proliferation & Senescence

- Quick Cell Proliferation Assay Kit
- Senescence Detection Kit
- High Throughput Apoptosis/Cell Viability Assay Kits
- LDH-Cytotoxicity Assay Kit
- Bioluminescence Cytotoxicity Assay Kit
- Live/Dead Cell Staining Kit

Cell Damage & Repair

- HDAC Fluorometric & Colorimetric Assays & Drug Discovery Kits
- HAT Colorimetric Assay Kit & Reagents
- DNA Damage Quantification Kit
- Glutathione & Nitric Oxide Fluorometric & Colorimetric Assay Kits

Signal Transduction

- cAMP & cGMP Assay Kits
- Akt & JNK Activity Assay Kits
- Beta-Secretase Activity Assay Kit

Adipocyte & Lipid Transfer

- Recombinant Adiponectin, Survivin, & Leptin
- CETP Activity Assay & Drug Discovery Kits
- PLTP Activity Assay & Drug Discovery Kits
- Total Cholesterol Quantification Kit

Molecular Biology & Reporter Assays

- siRNA Vectors
- Cloning Insert Quick Screening Kit
- Mitochondrial & Genomic DNA Isolation Kits
- 5 Minutes DNA Ligation Kit
- 20 Minutes Gel Staining/Destaining Kit
- β -Galactosidase Staining Kit & Luciferase Reporter Assay Kit

Growth Factors and Cytokines

Monoclonal and Polyclonal Antibodies

FOR RESEARCH USE ONLY! Not to be used on humans.