

PLC γ 2 Polyclonal Antibody

CATALOG NO:	3710-30T	30 μ g (Trial size)
	3710-100	100 μ g
HOST:	Rabbit	
IMMUNOGEN:	Synthetic peptide surrounding amino acid 1252 of human PLC γ 2 (ID# BV-411).	
SPECIES REACTIVITY:	Human	

FORMULATION:

0.5 mg/ml protein A affinity purified rabbit polyclonal antibody in phosphate-buffered saline (PBS) containing 30% glycerol, 0.5% BSA, and 0.01% thimerosal.

STORAGE CONDITIONS:

Store at -20°C. For long term storage, aliquot and freeze at -70°C. Avoid repeated freeze/thaw cycles.

BACKGROUND:

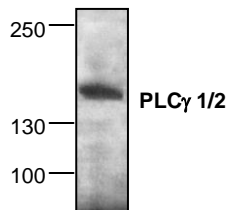
PLC (Phosphoinositide-specific phospholipase C) plays a significant role in transmembrane signaling. Four members of PLCs have been identified: PLC β , PLC γ , PLC δ , and PLC ϵ . In response to extracellular stimuli (e.g., hormone, growth factors, neurotransmitters), PLC hydrolyzes phosphatidylinositol 4,5-bisphosphate (PIP₂) into two secondary messengers: inositol 1,4,5-triphosphate (IP₃) and diacylglycerol (DAG). PLC γ 2 is engaged in antigen-dependent signaling in B-cells and collagen-dependent signaling in platelets.

SPECIFICITY:

The antibody recognizes 139 kDa human PLC γ 2. Jurkat cell lysate can be used as a positive control. Reactivity to other species has not been determined.

APPLICATION:

The antibody can be used in Western blotting (0.5-4 μ g/ml) and Immunohistochemistry (5 μ g/ml). However, the optimal concentrations should be determined individually. Blocking peptide (Cat.# 3710BP-50) is available separately.



Cat.# 3710-100
Western blot analysis
of PLC γ 1&2 expression
in Jurkat cell lysate.

RELATED PRODUCTS:

- PLC gamma 2 Antibody (**Cat. No. 3587R-100**)
- PLC gamma 2 Antibody (**Cat. No. 3587-100**)
- PLC gamma 2 Blocking Peptide (**Cat. No. 3587RBP-50**)
- PLC gamma Blocking Peptide (**Cat. No. 3710BP-50**)

FOR RESEARCH USE ONLY! Not to be used on humans.