

## SGLT-1 Polyclonal Antibody

<b>CATALOG NO:</b>	3711-30T	30 µg (Trial size)
	3711-100	100 µg
<b>HOST:</b>	Rabbit	
<b>SPECIES REACTIVITY:</b>	Human	
<b>IMMUNOGEN:</b>	Synthetic peptide surrounding amino acid 594 of human SGLT-1 (ID# BV-435).	

**FORMULATION:**

0.5 mg/ml protein A affinity purified rabbit polyclonal SGLT-1 antibody in phosphate buffered saline (PBS), pH 7.2, containing 30% glycerol, 0.5% BSA, and 0.01% thimerosal.

**STORAGE CONDITIONS:**

Store at -20°C. For long-term storage, aliquot and freeze at -70°C. Avoid repeated freeze/thaw cycles.

**BACKGROUND:**

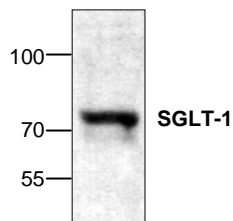
Glucose transporters are integral membrane proteins that mediate the transport of glucose and structurally related substances across cellular membranes. Two families of glucose transporter have been identified: the facilitated diffusion glucose transporter family (GLUT family), also known as 'uniporters,' and the sodium dependent glucose transporter family (SGLT family), also known as 'cotransporters' or 'symporters'. The SGLT1 gene encodes a protein that is involved in the active transport of glucose and galactose into eukaryotic and some prokaryotic cells.

**APPLICATIONS AND USAGE:**

The antibody can be used for Western blot analysis (0.5-4 µg/ml) and IHC (5 µg/ml). However, the optimal conditions should be determined individually. Jurkat cell lysate can be used as a positive control. Blocking Peptide (3711BP-50) is available separately.

**SPECIFICITY:**

The antibody detects 73 kDa SGLT-1 from human samples and in a lesser extent from mouse and rat samples. A ~50 kDa cleavage fragment can also be detected in Jurkat cell lysate.



**Cat.# 3711-100**  
Western blot analysis  
of SGLT-1 expression  
in Jurkat cell lysate.

**RELATED PRODUCTS:**

## Apoptosis Detection Kits &amp; Reagents

- Annexin V Kits & Bulk Reagents
- Caspase Assay Kits & Reagents
- Mitochondrial Apoptosis Kits & Reagents
- Nuclear Apoptosis Kits & Reagents
- Apoptosis Inducers and Set
- Apoptosis siRNA Vectors

## Cell Fractionation System

- Mitochondria/Cytosol Fractionation Kit
- Nuclear/Cytosol Fractionation Kit
- Membrane Protein Extraction Kit
- Cytosol/Particulate Rapid Separation Kit
- Mammalian Cell Extraction Kit
- FractionPREP Fractionation System

## Cell Proliferation &amp; Senescence

- Quick Cell Proliferation Assay Kit
- Senescence Detection Kit
- High Throughput Apoptosis/Cell Viability Assay Kits
- LDH-Cytotoxicity Assay Kit
- Bioluminescence Cytotoxicity Assay Kit
- Live/Dead Cell Staining Kit

## Cell Damage &amp; Repair

- HDAC Fluorometric & Colorimetric Assays & Drug Discovery Kits
- HAT Colorimetric Assay Kit & Reagents
- DNA Damage Quantification Kit
- Glutathione & Nitric Oxide Fluorometric & Colorimetric Assay Kits

## Signal Transduction

- cAMP & cGMP Assay Kits
- Akt & JNK Activity Assay Kits
- Beta-Secretase Activity Assay Kit

## Adipocyte &amp; Lipid Transfer

- Recombinant Adiponectin, Survivin, & Leptin
- CETP Activity Assay & Drug Discovery Kits
- PLTP Activity Assay & Drug Discovery Kits
- Total Cholesterol Quantification Kit

## Molecular Biology &amp; Reporter Assays

- siRNA Vectors
- Cloning Insert Quick Screening Kit
- Mitochondrial & Genomic DNA Isolation Kits
- 5 Minutes DNA Ligation Kit
- 20 Minutes Gel Staining/Destaining Kit
- β -Galactosidase Staining Kit & Luciferase Reporter Assay Kit

## Growth Factors and Cytokines

## Monoclonal and Polyclonal Antibodies

**FOR RESEARCH USE ONLY! Not to be used on humans.**