

Cathepsin V Polyclonal Antibody

CATALOG NO:	3712-30T 30 µg (Trial size) 3712-100 100 µg
HOST:	Rabbit
IMMUNOGEN:	Synthetic peptide surrounding amino acid 21 of human Cathepsin V (ID# BV-440)
SPECIES REACTIVITY:	Human, Mouse, Rat

FORMULATION:

0.5 mg/ml affinity purified rabbit polyclonal cathepsin V antibody in phosphate buffered saline (PBS), pH 7.2, containing 30% glycerol, 0.5% BSA, and 0.01% thimerosal.

STORAGE CONDITIONS:

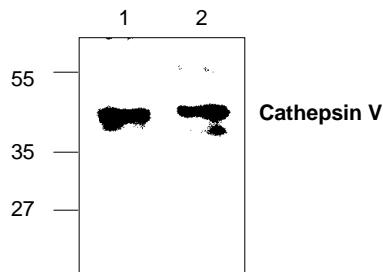
Store at -20°C. For long-term storage, aliquot and freeze at -70°C. Avoid repeated freeze/thaw cycles.

BACKGROUND:

Cathepsin V, also known as Cathepsin L2 and Cathepsin U, is a cysteine protease of the papain family. It is expressed as a proenzyme in lysosomes, which can be autocatalytically converted to the mature form at pH 4.0. Cathepsin V is specifically expressed in the thymus, testis, and corneal epithelium.

APPLICATIONS AND USAGE:

The antibody can be used for Western blot analysis (0.5-4 µg/ml) and Immunohistochemistry (5 µg/ml). However, the optimal conditions should be determined individually. Jurkat cell lysate and mouse small intestine tissue lysate can be used as positive controls. Blocking peptide (Cat.# 3712BP-50) is available separately.

**Cathepsin V****Cat.# 3712-100**

Western blots analysis of Cathepsin V expression in Jurkat (Lane 1) and mouse small intestine (Lane 2) lysate.

RELATED PRODUCTS:

- Cathepsin L, human recombinant (**Cat. No. 1135-5, -100, -1000**)
- Human CellExp™ Cathepsin B, human recombinant (**Cat. No. 7408-10**)
- Human CellExp™ Cathepsin D, human recombinant (**Cat. No. 7409-10**)
- Human CellExp™ Cathepsin S, human recombinant (**Cat. No. 7277-10, -50, -1000**)
- Human CellExp™ Cathepsin L1, human recombinant (**Cat. No. 7410-10**)
- Cathepsin K, Active, human recombinant (**Cat. No. 7600-5, -50**)
- Cathepsin K, Active, mouse recombinant (**Cat. No. 7597-5, -50**)
- Cathepsin K, Active, rat recombinant (**Cat. No. 7598-5, -50**)
- Cathepsin B (active, human) (**Cat. No. 1021-5**)
- Cathepsin D (active, human) (**Cat. No. 1022-5**)
- Cathepsin H (active, human) (**Cat. No. 1023-5**)
- Procathepsin K, human recombinant (**Cat. No. 1026-10, -50, -1000**)
- Procathepsin K, mouse recombinant (**Cat. No. 1027-10, -50, -1000**)
- Procathepsin K, rat recombinant (**Cat. No. 1029-10, -50, -1000**)

FOR RESEARCH USE ONLY! Not to be used on humans.