

## Catalase Polyclonal Antibody

<b>CATALOG #:</b>	3806-30T 3806-100	30 µg 100 µg
<b>HOST:</b>	Rabbit	
<b>IMMUNOGEN:</b>	Synthetic peptide surrounding amino acid 514 of human Catalase (Internal ID# BV-543)	
<b>SPECIES REACTIVITY:</b>	Human	

**FORMULATION:**

100 µg (0.5 mg/ml) affinity purified rabbit polyclonal antibody in phosphate buffered saline (PBS), pH 7.2, containing 30% glycerol, 0.5% BSA, 0.5 mM EDTA, 0.03% Proclin.

**STORAGE CONDITIONS:**

Store at -20°C. For long term storage, aliquot and freeze at -80°C. Avoid freeze/thaw cycles.

**BACKGROUND DESCRIPTION:**

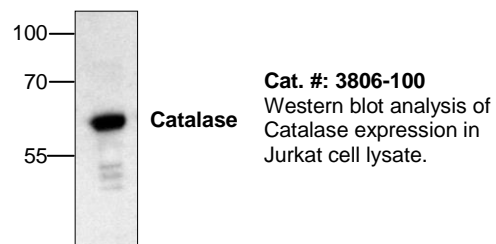
Catalase is known marker for peroxisomes. It is the most abundant protein in the peroxisomes. It is present in all aerobically respiring organisms. It protects cells from the toxicity of hydrogen peroxide.

**SPECIFICITY:**

The antibody detects a 58 kDa protein, corresponding to the apparent molecular mass of Catalase on SDS-PAGE immunoblots, in samples from human origins.

**APPLICATION AND USAGE:**

The antibody can be used in Western blotting (0.5-4 µg/ml). However, the optimal conditions should be determined individually.

**RELATED PRODUCTS:**

- Catalase Activity Colorimetric/Fluorometric Assay Kit (Cat. No. K773)
- Catalase Blocking Peptide (Cat. No. 3806BP)
- Catalase Antibody (Center) (Cat. No. 6727)
- Anti-Catalase Antibody (Cat. No. A1311)
- Catalase, Human Erythrocytes (Cat. No. 4712)
- Catalase, Human Recombinant (Cat. No. P1159)

**FOR RESEARCH USE ONLY! Not to be used on humans.**