

Lipocalin 2 Polyclonal Antibody

CATALOG No:	3819-30T	30 µg (Trial size)
	3819-100	100 µg
HOST:	Rabbit	
IMMUNOGEN:	Synthetic peptide corresponding to residues surrounding amino acids 40 of mouse Lipocalin 2	
INTERNAL ID:	BV-874	
SPECIES REACTIVITY:	Mouse	
FORMULATION:	0.5 mg/ml affinity purified rabbit anti-Lipocalin 2 polyclonal antibody in phosphate buffered saline (PBS), pH 7.2, containing 50% glycerol, 0.5% BSA and 0.03 % ProClin®	

STORAGE CONDITIONS:

Store at -20°C. For long-term storage, aliquot and freeze at -70°C. Avoid repeated freeze/thaw cycles.

DESCRIPTION:

Lipocalin 2 is from a family of proteins that are involved in the transportation of small hydrophobic molecules including steroids, retinoids, bilirubin and retinoids. Lipocalins have been linked to many biochemical processes such as immune response, pheromone transport, biological prostaglandin synthesis, retinoid binding, and cancer cell interactions.

SPECIFICITY:

The antibody recognizes ~ 25 kDa Lipocalin 2 in mouse samples.

APPLICATION AND USAGE:

The antibody can be used for Western blotting (0.5-4 µg/ml). However, the optimal conditions should be determined individually. Blocking peptide (Cat. No. 3819BP-50) is available separately.

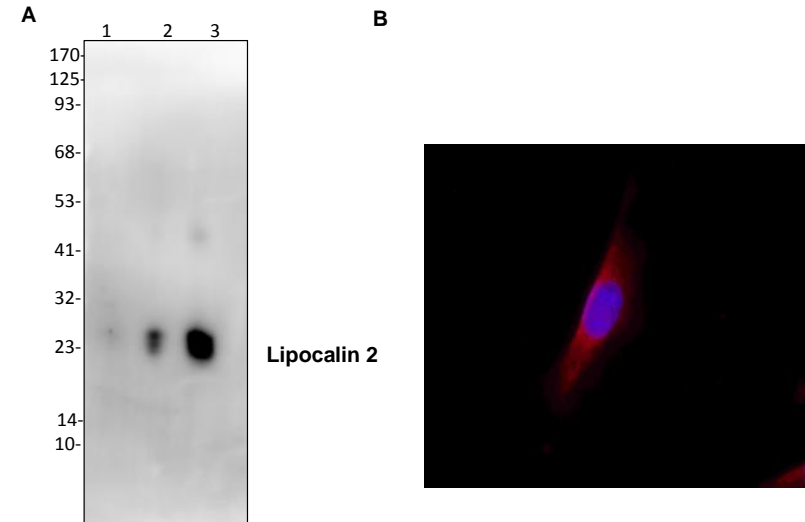


Fig. A. Western blot analysis of Lipocalin 2 using Lipocalin 2 antibody:

Lane 1. Mouse recombinant Lipocalin-2 / LCN2-2 ng
Lane 2. Mouse recombinant Lipocalin-2 / LCN2-10 ng
Lane 3. Mouse recombinant Lipocalin-2 / LCN2-50 ng

Fig. B. Immunofluorescence analysis of 3T3 cells using Anti-Lipocalin 2 Antibody

RELATED PRODUCTS:

- Lipocalin-2 Antibody (**Cat. No. 3819-100, -30T**)
- Lipocalin-2 Blocking Peptide (**Cat. No. 3819BP-50**)
- Lipocalin-2, human recombinant (**Cat. No. 4928-10, -50, -1000**)
- Lipocalin-2/NGAL (mouse) ELISA Kit (**Cat. No. K7568-100**)
- Human CellExp™ Lipocalin-2 / LCN2, human recombinant (**Cat. No. 7460-10, -50**)
- Human CellExp™ Lipocalin-2 / LCN2, mouse recombinant (**Cat. No. 7468-10, -50**)
- Human CellExp™ Lipocalin-2 / LCN2, rat recombinant (**Cat. No. 7469-10, -50**)

FOR RESEARCH USE ONLY! Not to be used on humans.