

Anti-Trek-1 Antibody

CATALOG NO: 3841-30T 30 µg (Trial size)
3841-100 100 µg

HOST: Rabbit

ANTIBODY TYPE: Polyclonal

IMMUNOGEN: Synthetic peptide corresponding to residues surrounding amino acids 417 of mouse Trek-1 (ID# BV-945)

SPECIES REACTIVITY: Mouse, Rat (Tested); Human (Expected)

FORMULATION:

0.5 mg/ml affinity purified rabbit anti-Trek-1 polyclonal antibody in phosphate buffered saline (PBS), pH 7.2, containing 30% glycerol, 0.5% BSA, 0.5 mM EDTA and 0.03% proclin

STORAGE CONDITIONS:

Store at -20 °C. For long-term storage, aliquot and freeze at -70 °C. Avoid repeated freeze-thaw cycles.

DESCRIPTION:

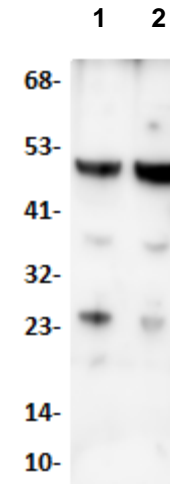
Trek-1 and Trek-2 belong to the tandem-pore K⁺ channel family that has two pore-forming domains and four transmembrane segments. Trek-1 is expressed throughout the central nervous system whereas Trek-2 is found mostly in the cerebellum, spleen and testis. Trek-1 is activated by arachidonic acid and polyunsaturated fatty acids.

SPECIFICITY:

The antibody recognizes ~47 kDa Trek 1 of mouse and rat origins. Reactivity to other species has not been tested.

APPLICATION AND USAGE:

The antibody can be used for Western blotting (0.5-4 µg/ml). However, the optimal conditions should be determined individually. Blocking peptide (Cat.# 3841BP-50) is available separately.



Western blot analysis of **1)** Mouse muscle and **2)** rat muscle lysate samples using Anti-Trek-1 Antibody.

RELATED PRODUCTS:

VDAC/Porin Antibody (Cat. No. 3594)
Anti-CTFR Antibody (SPM176) (Cat. No. A1575)
Phospho-CCR5 (Ser349) Antibody (Cat. No. A1734)
Phospho-NMDAR2B (Tyr1474) Antibody (Cat. No. A2208)
Superoxide Dismutase 4 (SOD-4) Antibody (3A1) (Cat. No. 6171)