

## ECM-1 Polyclonal Antibody

**CATALOG NO:** 3843-30T 30 µg (Trial size)  
3843-100 100 µg

**HOST:** Rabbit

**IMMUNOGEN:** Synthetic peptide corresponding to residues surrounding amino acids 546 of mouse ECM-1 (ID# BV-A18)

**SPECIES REACTIVITY:** Human, Mouse, Rat

### FORMULATION:

0.5 mg/ml affinity purified rabbit anti-ECM-1 polyclonal antibody in phosphate buffered saline (PBS), pH 7.2, 30% glycerol, 0.5% BSA, 0.5 mM EDTA and 0.03% proclin

### STORAGE CONDITIONS:

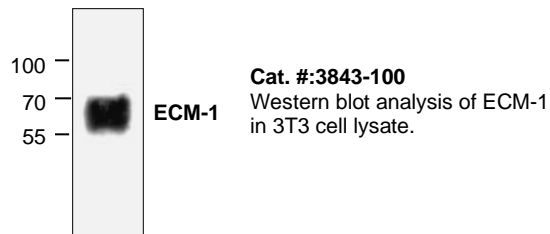
Store at -20° C. For long-term storage, aliquot and freeze at -70° C. Avoid repeated freeze/thaw cycles.

### SPECIFICITY:

The antibody recognizes ~61 kDa ECM-1 of human, mouse, and rat origins. Reactivity to other species has not been tested.

### APPLICATION AND USAGE:

The antibody can be used for Western blotting (0.5-4 µg/ml). However, the optimal conditions should be determined individually. Blocking peptide (Cat.# 3843BP-50) is available separately.



**FOR RESEARCH USE ONLY! Not to be used on humans.**

### RELATED PRODUCTS:

#### Apoptosis Detection Kits & Reagents

- Annexin V Kits & Bulk Reagents
- Caspase Assay Kits & Reagents
- Mitochondrial Apoptosis Kits & Reagents
- Nuclear Apoptosis Kits & Reagents
- Apoptosis Inducers and Set
- Apoptosis siRNA Vectors

#### Cell Fractionation System

- Mitochondria/Cytosol Fractionation Kit
- Nuclear/Cytosol Fractionation Kit
- Membrane Protein Extraction Kit
- Cytosol/Particulate Rapid Separation Kit
- Mammalian Cell Extraction Kit
- FractionPREP Fractionation System

#### Cell Proliferation & Senescence

- Quick Cell Proliferation Assay Kit
- Senescence Detection Kit
- High Throughput Apoptosis/Cell Viability Assay Kits
- LDH-Cytotoxicity Assay Kit
- Bioluminescence Cytotoxicity Assay Kit
- Live/Dead Cell Staining Kit

#### Cell Damage & Repair

- HDAC Fluorometric & Colorimetric Assays & Drug Discovery Kits
- HAT Colorimetric Assay Kit & Reagents
- DNA Damage Quantification Kit
- Glutathione & Nitric Oxide Fluorometric & Colorimetric Assay Kits

#### Signal Transduction

- cAMP & cGMP Assay Kits
- Akt & JNK Activity Assay Kits
- Beta-Secretase Activity Assay Kit

#### Adipocyte & Lipid Transfer

- Recombinant Adiponectin, Survivin, & Leptin
- CETP Activity Assay & Drug Discovery Kits
- PLTP Activity Assay & Drug Discovery Kits
- Total Cholesterol Quantification Kit
- siRNA Vectors
- Cloning Insert Quick Screening Kit
- Mitochondrial & Genomic DNA Isolation Kits
- 5 Minutes DNA Ligation Kit
- 20 Minutes Gel Staining/Destaining Kit
- $\beta$ -Galactosidase Staining Kit & Luciferase Reporter Assay Kit

#### Growth Factors and Cytokines

#### Monoclonal and Polyclonal Antibodies