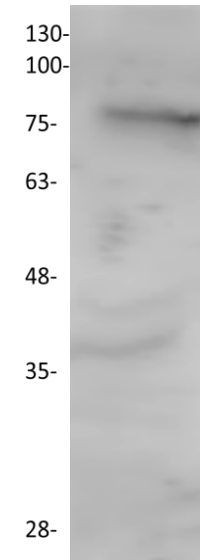


EDEM1 Antibody

ALTERNATE NAMES:	ER degradation-enhancing alpha-mannosidase-like protein 1
CATALOG NO:	3904-30T 30 µg (Trial size) 3904-100 100 µg
HOST:	Rabbit
ISOTYPE:	IgG
IMMUNOGEN:	Synthetic peptide near the C-terminal of mouse EDEM1
INTERNAL ID:	BV-M18
PURIFICATION:	Affinity purified
FORM:	Liquid
FORMULATION:	0.5 mg/ml antibody in 1 x PBS pH 7.2, 0.01 % BSA, 0.01 % thimerosal, and 50 % glycerol.
SPECIES REACTIVITY:	Human, Mouse, Rat.
STORAGE CONDITIONS:	Store at -20°C. Avoid repeated freeze/thaw cycles.
DESCRIPTION:	EDEM1 belongs to the glycosyl hydrolase 47 family. It extracts misfolded glycoproteins, but not glycoproteins undergoing productive folding, from the calnexin cycle. It is directly involved in endoplasmic reticulum-associated degradation (ERAD) and targets misfolded glycoproteins for degradation in an N-glycan-dependent manner.
APPLICATION:	Western blot: (1:200 dilution) Use 0.5 – 4 µg/ml based on your sample type.



Western blot of rat kidney tissue lysate.

RELATED PRODUCTS:

- EDEM1 Blocking Peptide (**Cat. No. 3904BP-50**)
- EDEM3 antibody (**Cat. No. 3614-100**)

This information is only intended as a guide. The optimal dilution must be determined by the user.