

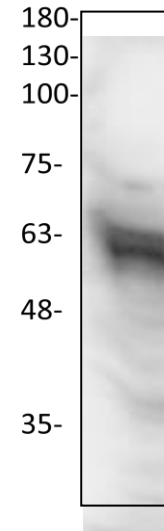
PAK1 Antibody

ALTERNATE NAMES:	p21/Cdc42/Rac1-activated kinase 1. PAK alpha, Alpha-PAK, p65-PAK	
CATALOG NO:	3908-30T	30 µg (Trial size)
	3908-100	100 µg
HOST:	Rabbit	
ISOTYPE:	IgG	
IMMUNOGEN:	Synthetic peptide at C-terminal (BV-M3)	
PURIFICATION:	Affinity purified	
MOLECULAR WEIGHT:	~ 62 kDa	
FORM:	Liquid	
FORMULATION:	0.5 mg/ml of antibody in PBS, 0.01 % BSA, 0.01 % thimerosal, and 50 % glycerol, pH7.2	
SPECIES REACTIVITY:	Human, Mouse and Rat.	
STORAGE CONDITIONS:	Store at -20°C. Avoid repeated freeze/thaw cycles.	

DESCRIPTION: Human p21-GTPase-activated protein kinase 1 (PAK1) is a functional homolog of STE20 of *Saccharomyces cerevisiae*. PAK1 is a downstream effector of the Rho-family small GTPases Rac and Cdc42. A serine/threonine kinase, PAK1 induces the formation of filopodia and lamellipodia in Swiss 3T3 cells. PAK1 inhibits myosin light chain kinase, and appears to play a role in the regulation of apoptosis by phosphorylating the death agonist Bad. Membrane targeting of PAK1 induces neurite outgrowth. PAK1 may also regulate NFκB activation.

APPLICATION: Western blot: 1:200

Note: This information is only intended as a guide. The optimal dilutions must be determined by the user.



Western blot of Jurkat cell lysate with PAK1 antibody.

RELATED PRODUCTS:

- PAK1 Blocking Peptide (**Cat.No.3908BP-50**)
- PAK1 antibody (**Cat. No. 3248-100**)
- PAK2 antibody (**Cat. No. 3443-100**)
- PAK3 antibody (**Cat. No. 3686-100**)
- PAK4 antibody (**Cat. No. 3444-100**)
- PAK5/PAK7 antibody (**Cat. No. 3928-100**)
- PAK6 antibody (**Cat. No. 3927-100**)
- Active PAK4 (**Cat.NO. 7707-5**)
- Active PAK7 (**Cat.NO. 7727-5**)

FOR RESEARCH USE ONLY! Not to be used on humans.